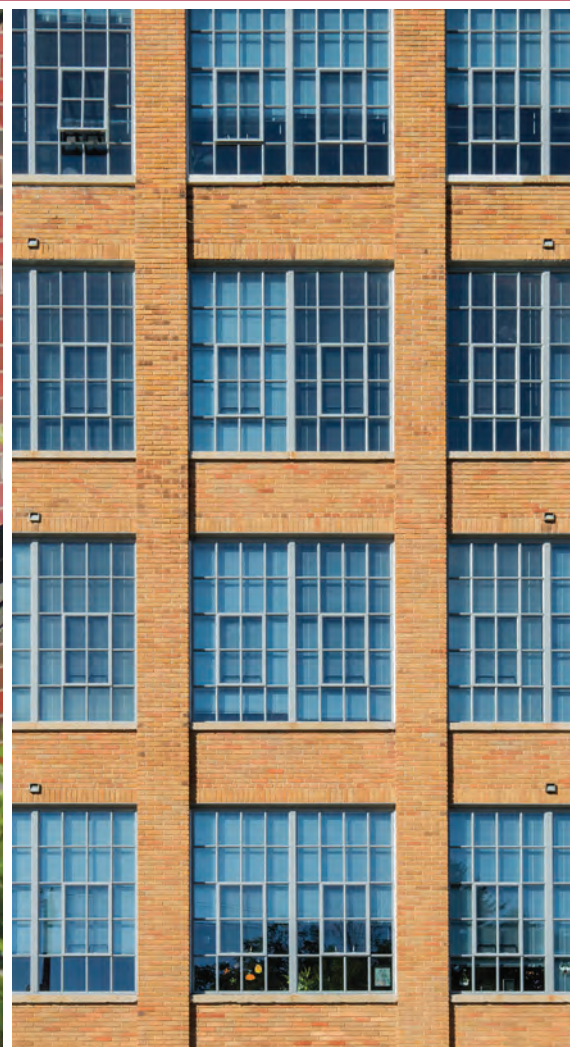
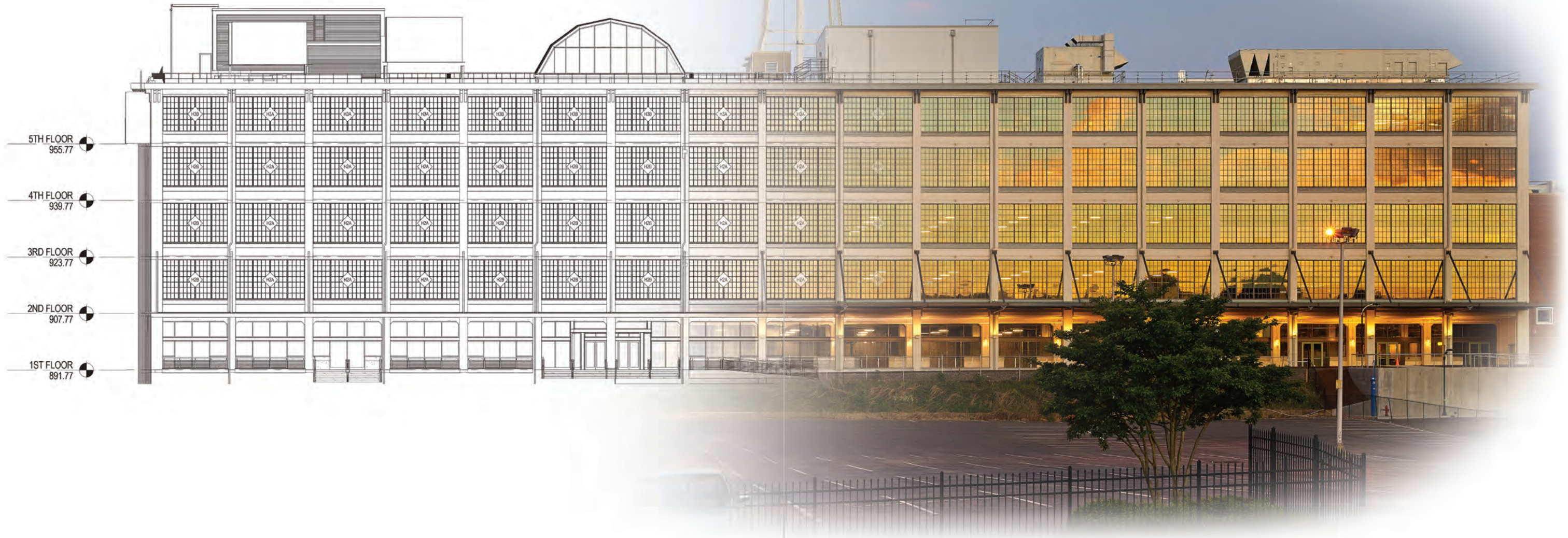


YOUR VISION. OUR EXPERIENCE.™



525@VINE
WINSTON-SALEM, NC
ARCHITECT: GAUDREAU, INC.



5TH FLOOR
955.77

4TH FLOOR
939.77

3RD FLOOR
923.77

2ND FLOOR
907.77

1ST FLOOR
891.77

YOUR VISION.

OUR EXPERIENCE.™



It's our experience and expertise — broadened over decades — that enables us to bring your vision to life.

We've built our reputation, and our portfolio, one custom-engineered solution at a time, partnering with you to deliver solutions for unique and standard applications alike. As a result, we can resolve your most difficult challenges with beautiful, functional, energy-efficient window and door systems that draw upon hundreds of models and accessories and, yes, more than a bit of human ingenuity to deliver the solution that is uniquely yours.



Cardozo Education Campus -- Washington, D.C.
• Double Hung, Fixed, and Casement Windows

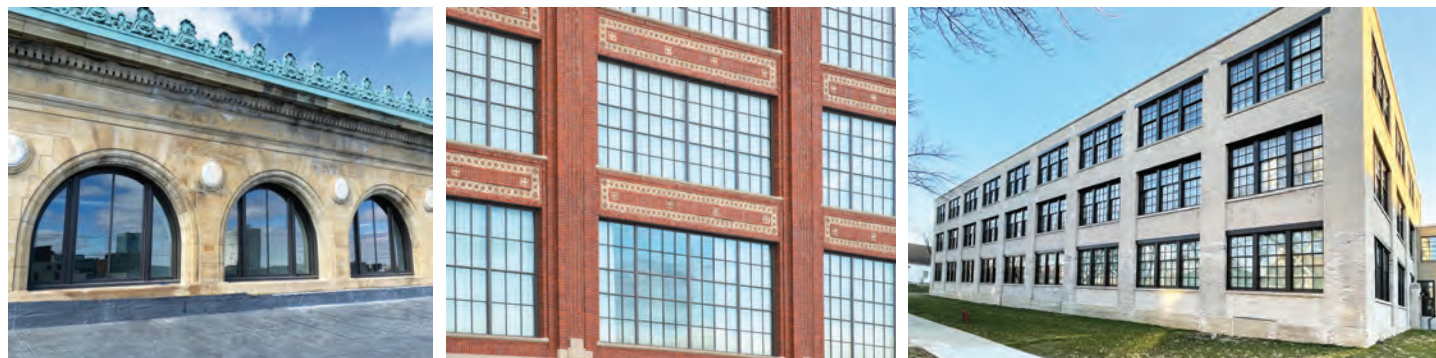


CORE COMPETENCIES

- Historical preservation and renovations
- New construction and replacement systems
- Schools and universities
- Security, Blast mitigation, & ballistic resistant
- Hurricane impact
- Office structures and medical buildings
- Condominiums and apartment buildings
- Government buildings
- Human impact
- Pre-fab, modular construction

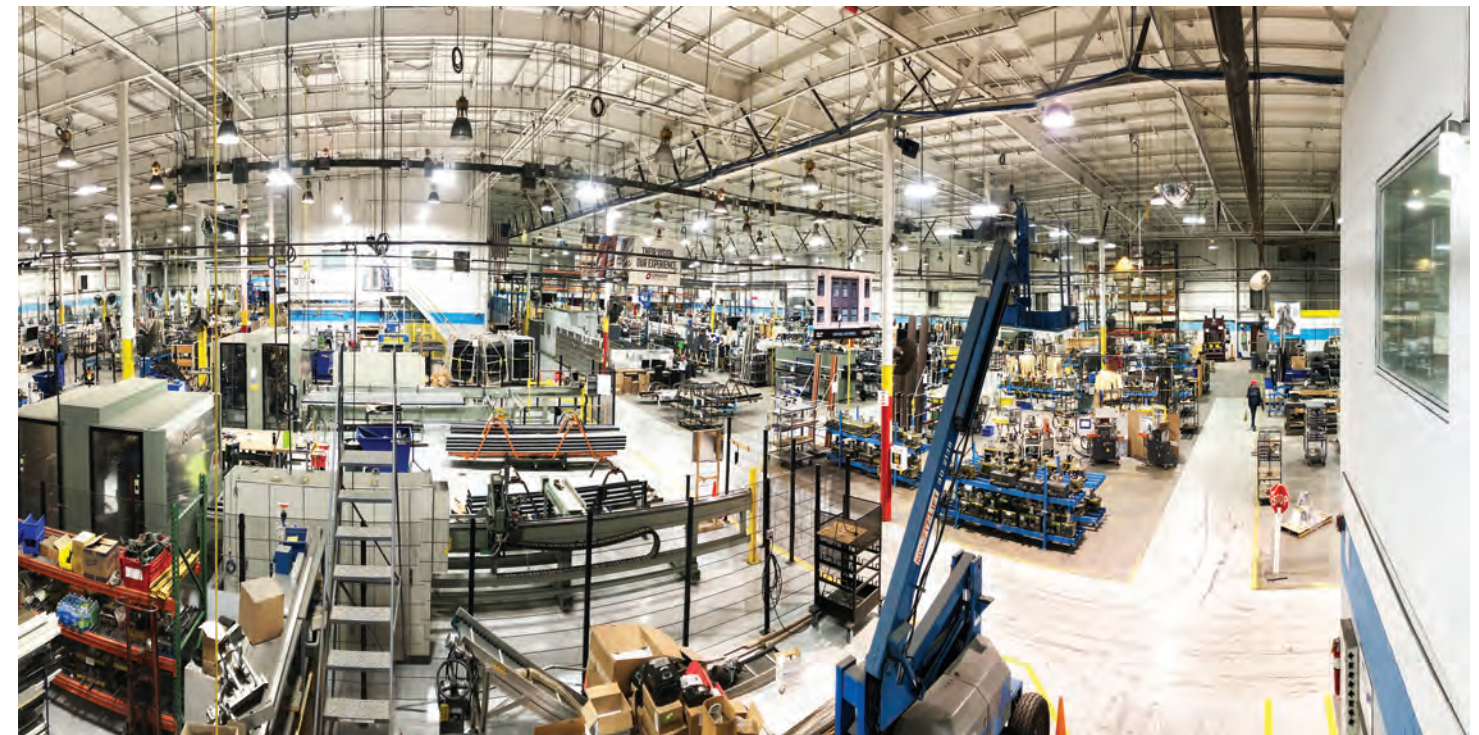
APPROVALS & CERTIFICATIONS

- National Park Service project approvals
- AAMA tested and certified for commercial and architectural grade windows
- Blast tested windows and doors to GSA and UFC/DOD blast loading up to 33 PSI
- Ballistic tested windows to UL 752, level III
- LEED certified projects
- Florida HVHZ state-wide approval program
- IGCC insulated glass certification
- NFRC thermal certification program
- NYC Falls Prevention



PRODUCTS

- Advanced thermal windows
- Euro-style windows
- Projected windows
- Fixed windows
- Casement windows
- Hung windows
- Sliding windows
- Sliding doors
- Self-balanced DH windows
- Terrace doors
- Security screens
- Historical replication windows
- Hurricane-impact windows
- Blast-resistant windows & doors
- Window wall systems



Main Production Facility -- Mount Rose, Pennsylvania



ASBURY PARK

Asbury Park, NJ

• Historic Fixed & Triple Hung Windows

The existing windows were triple hung, with an articulated brick mold and patterned, concave muntins. Fortunately, Graham Architectural Products is the only manufacturer in the industry that makes a triple-hung window that can balance all three sashes within one frame.

ADVANCING THE INDUSTRY THROUGH EXPERIENCE AND INGENUITY

We've been solving fenestration's toughest challenges for more than four decades. We have produced, delivered, and stood behind the highest quality and most innovative commercial and architectural-grade products since 1972.

HIGHLY ENERGY EFFICIENT DESIGNS

Graham Architectural Products utilizes the most thermally efficient designs in the industry. A polyamide strut thermal break allows for increased airspace and aluminum separation while providing an additional hollow for increased strength.

GT6 WINDOW SYSTEM

Graham Architectural Products' GT6 window system is a family of casement, projected and fixed windows with various frame depths. It utilizes common frame parts to allow numerous configuration variations and glazing styles. Each frame depth offers four glazing profile options: beveled, concave, flat, and flat with flush face.

STEEL REPLICA WINDOW

Designed to replicate the original steel windows used in many buildings built in the early to mid-twentieth century, the innovative SR6700 Series window features a "floating vent" and large openings with minimal sight lines. Historic concave or sloped true muntins and applied grids add to the authentic steel window look. The SR6700's one-of-a-kind design has even been approved by the National Park Service on several projects.

PRE-FAB/MODULAR CONSTRUCTION SOLUTIONS

Graham Architectural Products has extensive experience working with pre-fabricated modular building systems. This method reduces site material logistical delays, weather delays, and on-site storage challenges and shortages. It also reduces field labor costs and the need for additional skilled labor.

TRIPLE-HUNG

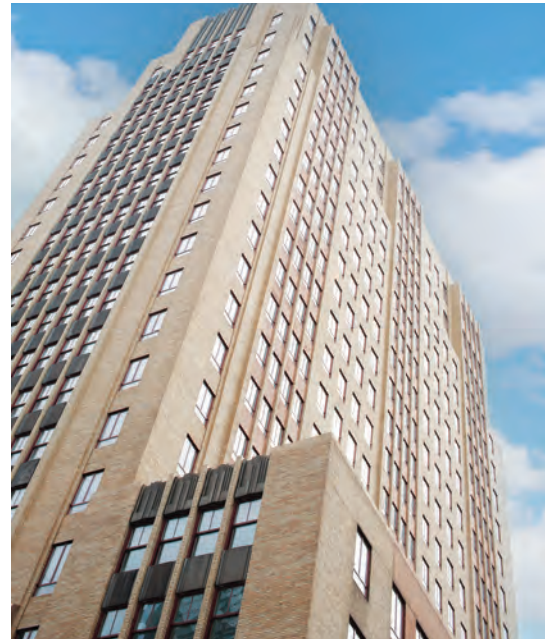
Graham Architectural Products is one of the very few manufacturers that can fabricate a fully functional aluminum triple-hung window. All three sash can open and close, replicating the original windows.

ICON, 1616 Walnut St.

Philadelphia, PA

- Historic Awning & Double-Hung Windows

Graham Architectural Products' strutted double-hung series successfully replicated the original steel windows, meeting the standards set by the National Parks Service.



49-51 Chambers St.

New York, NY

- Historic Double Hung, S1400H Fixed & Offset-Fixed Windows

Graham Architectural Products' curved-in-plan windows perfectly matched the beauty of the original historic windows.



Asbury Park

Asbury Park, NJ

- Fixed & Historic Triple-Hung Windows

Graham Architectural Products offers a unique solution with our triple-hung windows, which balance all three sash within one frame. Featuring concave muntins and detailed brick molds, these windows provide functionality and style for any project.



The National, Philadelphia, PA
• Historic Fixed & Projected Windows



THE BATTERY
PHILADELPHIA, PA
• SR6700 Steel Replica Windows

Delivering thermal performance and stability, while matching the sightlines of the steel windows that originally filled this coal-fired power station's 40-foot openings. Our SR6700 fixed and projected windows were instrumental in securing historic tax credits for this project.

THE DANIEL
Knoxville, TN
• SR6700 Steel Replica Windows

Matching the thin sightlines of the original windows made Graham's SR6700 steel replica projected series a natural fit for this 125+ year-old building.



FIRESTONE TRIANGLE BUILDING
Akron, OH
• Steel Replica Windows

The intent for the 700 windows was to give the appearance of the old steel factory sash, making our historically accurate windows a good fit. The concave bevel was the exact detail that this historic architect was looking for.



Alden Park Manor, Philadelphia, PA
• SR6700 Steel Replica Windows

253-256 BROADWAY

New York, NY

• Custom Historic Hung & Fixed Windows

Graham Architectural Products provided an innovative solution to the New York City Landmark Preservation Conservancy requirements by designing a new and unique dual-action window system for this Moses Preservation Award winning building.

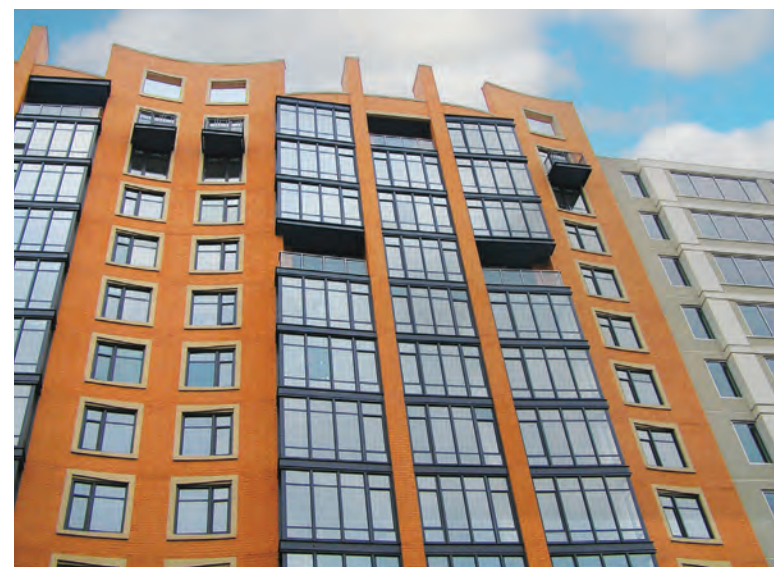


ONE PARK CREST

Tysons Corner, VA

• Custom Dual Action Windows & Terrace Doors

For this new construction luxury high-rise, our tilt & turn window was selected for its dual-action functionality and thermal efficiency.



THE DUMONT

Washington, DC

• Custom Fixed Windows

Floor-to-slab fixed windows in conjunction with floor slab covers give this impressive building the appearance of a curtain wall with a window wall solution.



The Residences at Edison Lofts, West Orange, NJ

• Custom Steel Replica Windows



VILLAGE OF IMAGINE

Orlando, FL

- Custom Hurricane-Resistant Sliding Glass Doors

Hurricane impact resistant sliding glass doors rated up to +70 psf and -100 psf were used for these upscale condominiums.



DOBBINS AFB

Atlanta, GA

- Custom Blast-Resistant Fixed Windows

Blast-resistant fixed windows with mulling options were used to fill the large openings for this Air Force Base.



**CONSERVATORY AT
HAMMOCK BEACH**

Palm Coast, FL

- Custom Hurricane-Resistant Fixed Windows & Terrace Doors

Graham Architectural Products' hurricane-resistant fixed windows adorn this private clubhouse on the exclusive Hammock Beach Resort golf course.



The Cigar Factory, Charleston, SC

- Hurricane-Resistant Single Hung & Fixed Windows Achieved NPS Approval

PRESERVING TRADITION. EMBRACING INNOVATION.

Graham Architectural Products is America's premier historic replication window company, manufacturing and supplying windows of classic beauty and substance for buildings of stature. That's a reputation worth keeping, as Graham embraces innovation in window design and performance.

Many of our projects have met the demanding scrutiny of the **National Park Service** and other preservation jurisdictions. We preserved the original aesthetics while providing improved thermal efficiency and structural integrity to countless buildings across America. We take pride in knowing that we helped restore these buildings to their former glory.



Belden Stratford — Chicago, IL

• GT6700 model for fixed and casement windows, and GT2200 model for fixed and single-hung applications.



Yonkers City Hall — Yonkers, NY

• Tilt-and-Turn/Fixed Windows



253-256 Broadway, New York, NY

• Custom Tilt-and-Turn Windows

SCHOOLS & UNIVERSITIES

We are proud to have supplied hundreds of school districts, colleges, and universities nationwide with our products. Educational applications have specific demands regarding function and durability that continue to point architects and building owners toward a Graham solution.

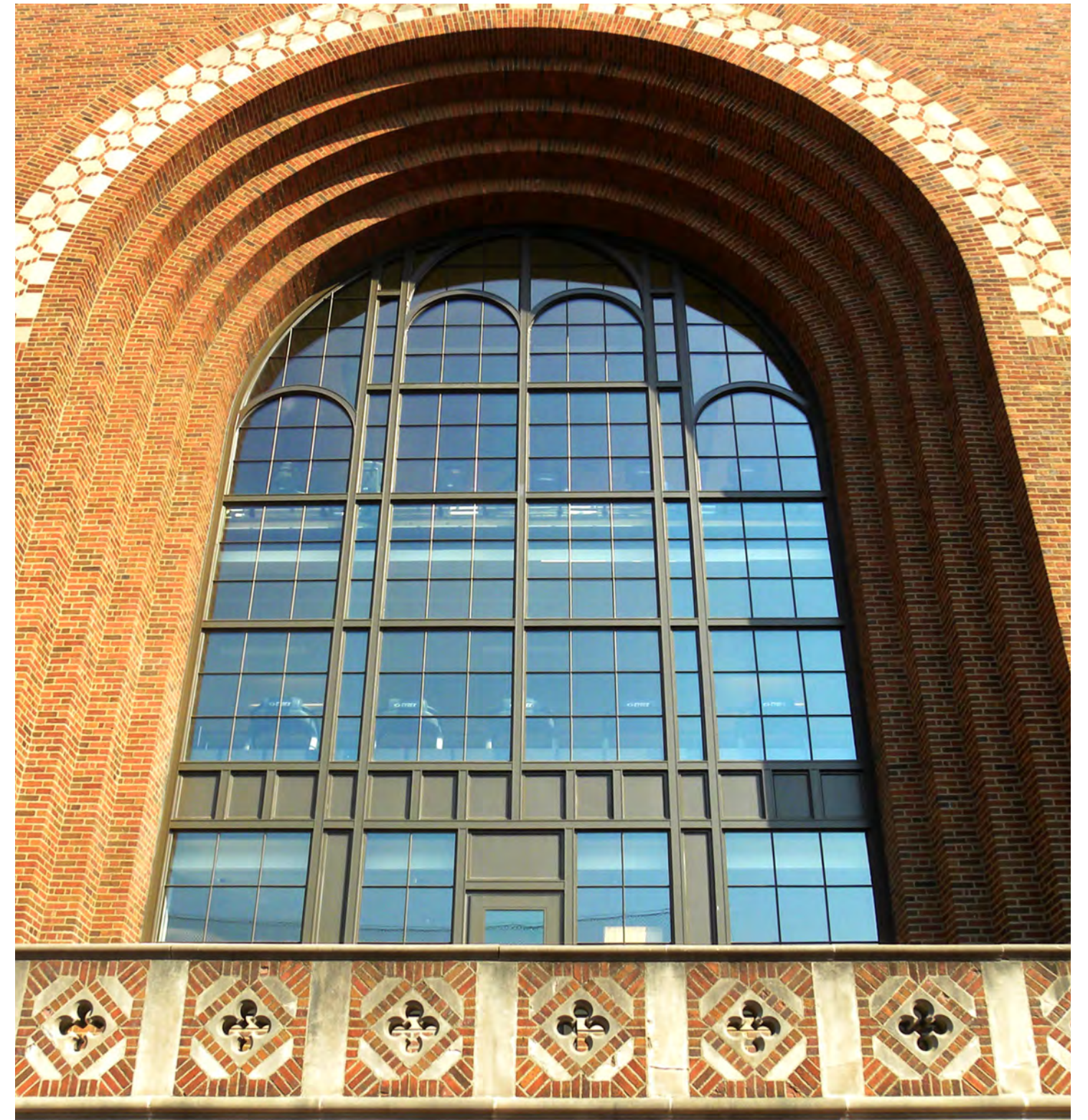
At Graham Architectural Products, we understand the stringent requirements for these buildings that must stand the test of time. We're also acutely aware of the limited timelines available to retrofit buildings during downtime and strive to satisfy the entire scope to achieve the customers' goals. Many prestigious educational facilities have chosen the Graham Architectural Products brand because of the quality and timeliness we offer.



Hughes High School – Cincinnati, OH
• Series 2500 Hung Windows



Stanford University E.V.G.R. — Stanford, CA
• Projected & Fixed Windows

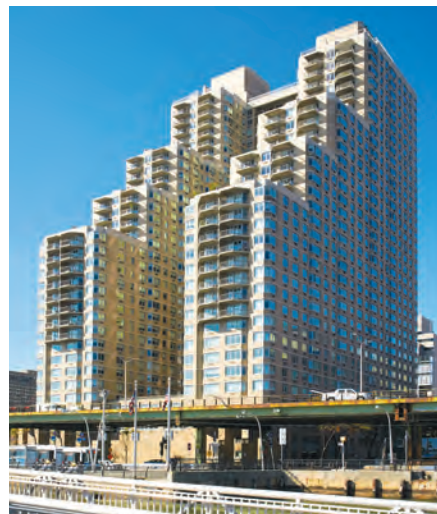


University of Michigan, Intramural Sports Building -- Ann Arbor, MI
• Custom Fixed Windows

MULTI-FAMILY RESIDENTIAL

Although residential in nature, high-rise apartment, and condo conversions require special considerations to ensure proper performance in a durable design.

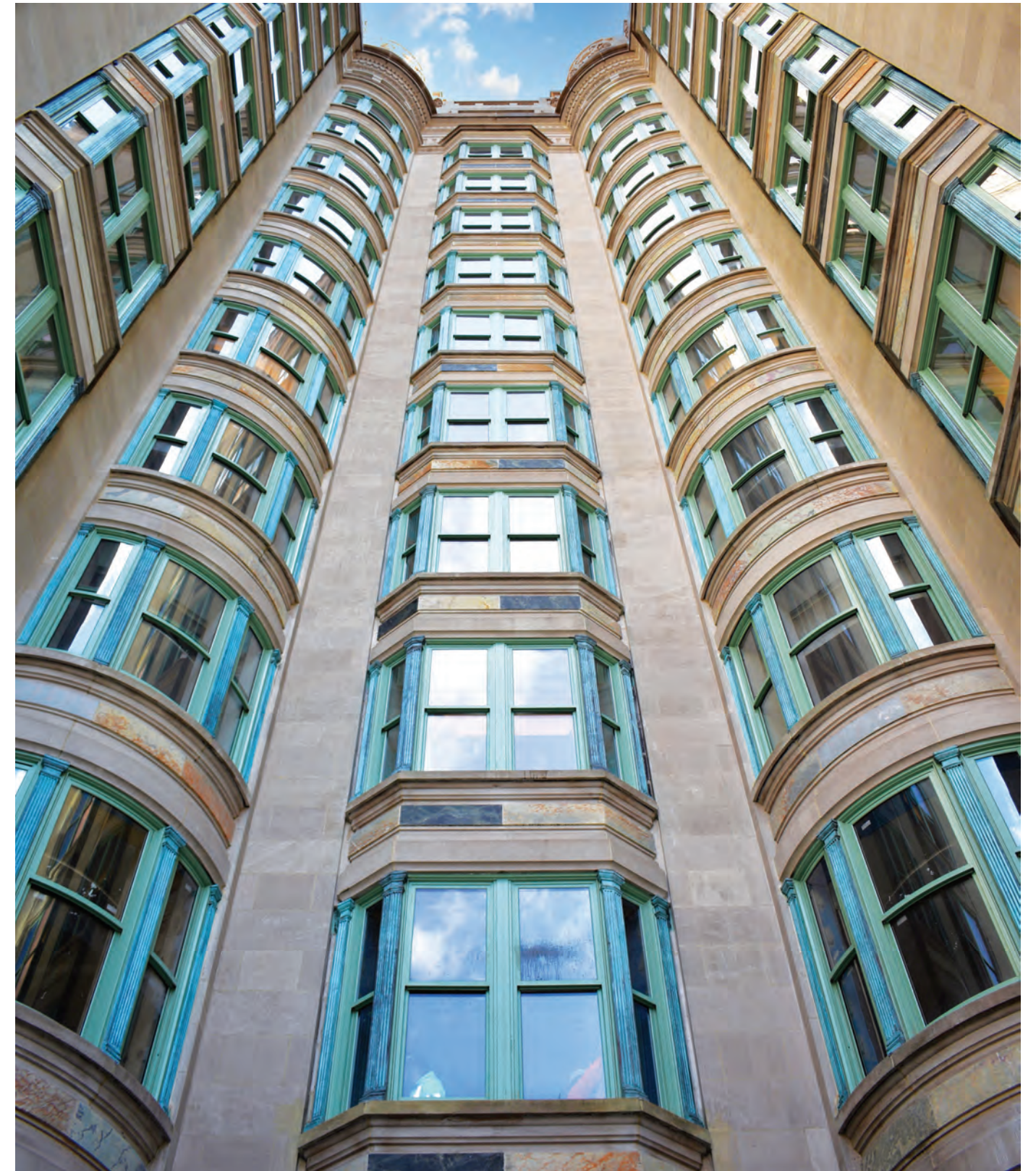
Graham Architectural Products has a solution for all multi-family housing projects regardless of the location, size, or design. Whether it is a custom-designed system, historical renovation or replication, or simply punched window openings, we have an extensive product line and the expertise to accommodate your design.



Rivergate Apts. — New York, NY
• Casement Windows



Cable Mills — Williamstown, MA
• Reengineered a window with a floating vent that achieved approval from the National Park Service



49-51, Chambers St., New York, NY
• Double Hung, In-swing Casement, Historic Fixed/Offset-Fixed Windows, and Curved-In-Plan Hung Windows

GOVERNMENT & MUNICIPAL

Few customers have more specific and demanding requirements than our government's, whether local or national. Whether it is a historic courthouse or a new government office facility, Graham Architectural Products has the answer.

Working with project officials and the design teams, we have successfully completed various government and municipal projects. A vast majority in recent years have required blast-resistant products, which is also one of our specialties.



Chicago Art Institute — Chicago, IL
• Fixed & Projected Windows



U.S. Department of Commerce Building — Washington, D.C.
• Interior Blast Guard Windows



U.S. Post Office — New York, NY
• Fixed Windows

HEALTHCARE

Providing hospitals, clinics, and other healthcare facilities with our highly engineered window and door products is another Graham Architectural Products specialty.

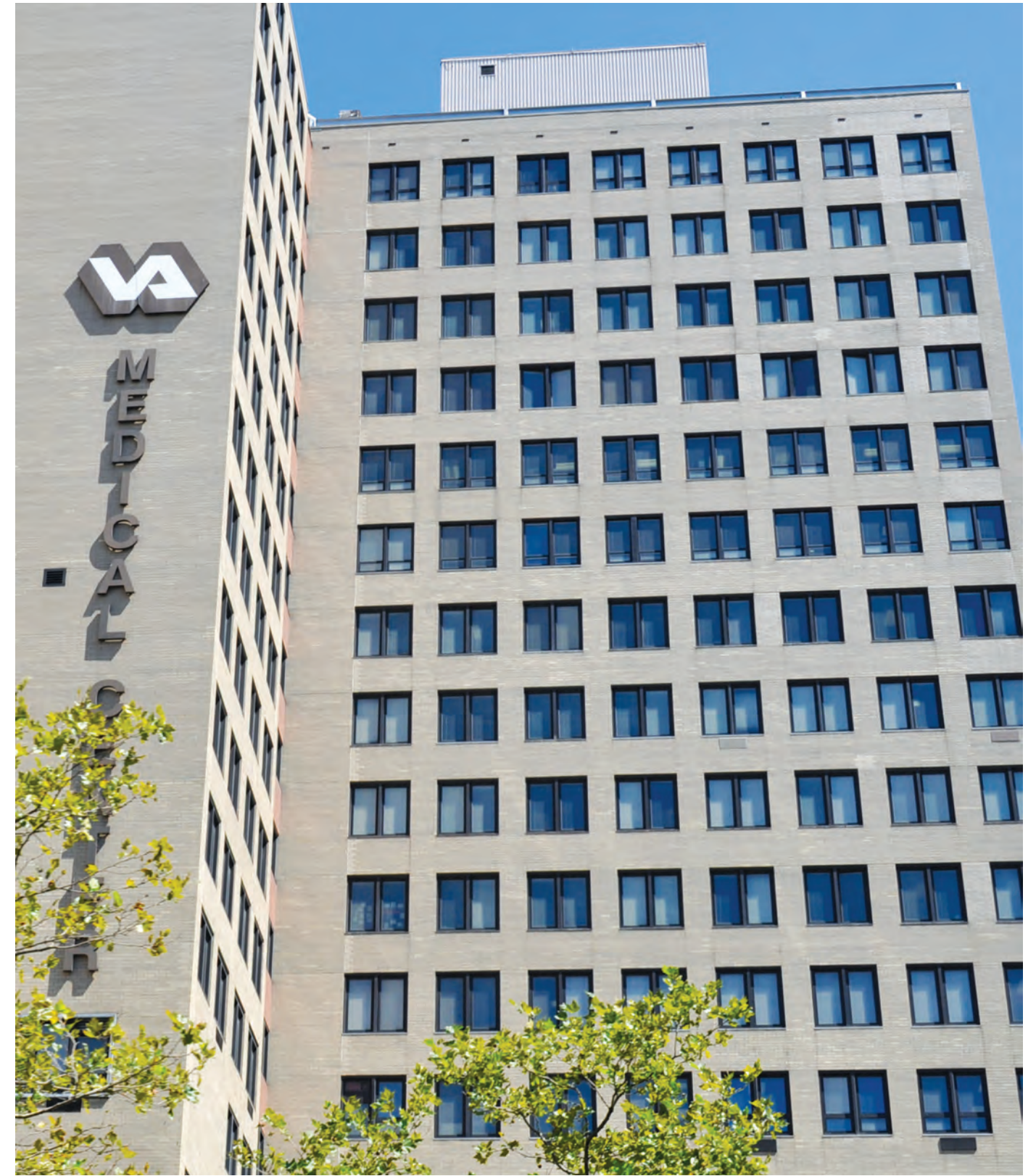
We can custom design and manufacture a window system to meet the needs of healthcare facilities at all levels. Whether it's our standard architectural grade windows, security products, or even a human impact-resistant system, Graham Architectural Products stands ready to meet the needs of the facility.



Red Cross Building — Washington, D.C.
• Fixed Windows



Emory University School of Medicine — Atlanta, GA
• Casement/Projected Windows



Manhattan VA Hospital — New York, NY
• Casement Windows

PROTECTING LIFE & PROPERTY

Blast-resistant windows are a key factor in mitigating unnecessary injuries in the event of an accidental or intentional explosion. Graham Architectural Products was a pioneer in designing and manufacturing blast-resistant windows following the events of September 11, 2001. We offer a full line of blast-resistant windows and doors for all project applications at various protection levels, along with the expertise to deliver the appropriate product for the job.

Hurricane-resistant windows and doors provide life and property protection from hurricanes and typhoons. Graham Architectural Products' hurricane-resistant products are routinely tested to the Florida building code for high-velocity hurricane zones.



The Jasper Apartments — Charleston, SC
• Hurricane-Resistant Windows and Doors



Florida State University — Tallahassee, FL
• Fixed Windows & Terrace Doors

Graham Architectural Products specializes in both new construction and retrofit projects, providing custom designed solutions coast to coast and abroad to meet your project needs.

WEST

- SAN FRANCISCO, CA** (RETROFIT)
- STANFORD, CA** (NEW CONSTRUCTION)
- HOLLYWOOD, CA** (RETROFIT)

MIDWEST

- DENVER, CO** (RETROFIT)
- MILWAUKEE, WI** (RETROFIT)
- PHILADELPHIA, PA** (RETROFIT)
- OKLAHAMA CITY, OK** (RETROFIT)
- ST. LOUIS, MO** (RETROFIT)
- FORT WORTH, TX** (RETROFIT)
- SAN ANTONIO, TX** (RETROFIT)

SOUTHEAST

- DETROIT, MI** (RETROFIT)
- NEW YORK, NY** (RETROFIT)
- COLLEGE PARK, MD** (NEW CONSTRUCTION)
- KNOXVILLE, TN** (NEW CONSTRUCTION)
- TALLAHASSEE, FL** (NEW CONSTRUCTION)

INTERNATIONAL

- Afghanistan:**
 - CMU Barracks Bagram AFB, B6500 casements
 - 160 Man Barracks Bagram AFB, B6500 casements
 - Threat Support Facility Bagram AFB, B0300
- Honduras:**
 - Armed Forces HQ Soto Cano AFB, B2000 & B0300
 - Finance Bldg Soto Cano AFB, B1200
 - TECSA & J6 Bldg Soto Cano AFB, B2000
- Japan:**
 - Kadena Middle School Okinawa, B/HI6800 fixed
 - JK Mendle Elementary School Yokota AFB Japan, B6500 fixed & 7600
 - BEQ P353 Camp Shields Okinawa, B0200 & B7600
- Africa:**
 - P920 BEQ P944 Lodge Camp Lemonier Djibout Africa, B6800 fixed & B7600
- Diego Garcia:**
 - NGIS 10 B0900
- India:**
 - N500 HP Paradip India, B1200 & B0300
- Spain:**
 - BEQ 32, 34, 569 Rota Spain, B6500 fixed & awning
- Romania:**
 - Dining & Housing Deveselu Romania, B1200, B7500, B7600

OAHU, HI (NEW CONSTRUCTION)

WHATEVER YOUR NEED, GRAHAM ARCHITECTURAL PRODUCTS HAS A CUSTOM SOLUTION FOR YOU



HUMAN IMPACT WINDOW

A thermally strutted human impact casement window with specially designed hardware and glazing system for hospitals and psychiatric applications (maintenance personnel access only). Tested to withstand three 2000 ft-lb impacts and still operate.



OVERHEAD PULLEY COUNTER-BALANCED WINDOW

A counter-balanced double hung window with simultaneously operating sash using concealed pulleys. Eliminates the sash-weight design limitations and maintenance involved with traditional balancing hardware.

VANDAL RESISTANT & SECURITY SCREEN PRODUCTS

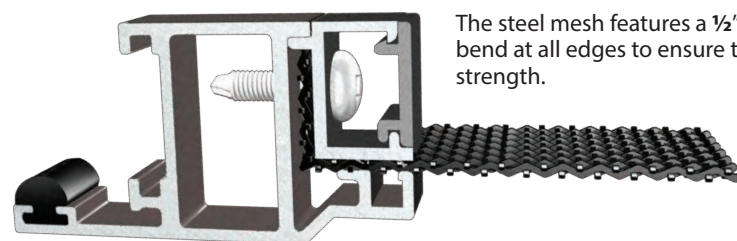
Medium and heavy-duty security screens with your choice of steel mesh or perforated steel plating. Custodial and anti-burglar hardware options are available. Can be field or factory installed on windows.



Standard Steel Mesh



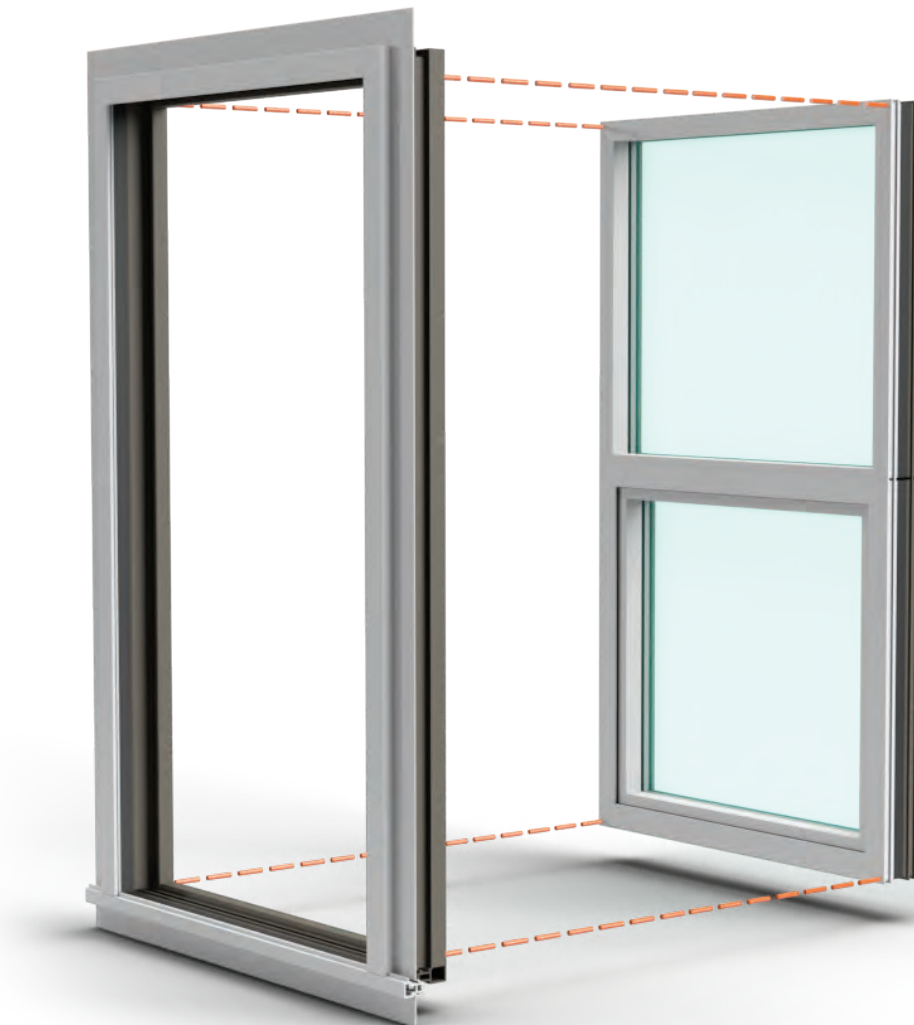
Perforated Steel Plating



The steel mesh features a 1/2", 90° bend at all edges to ensure tensile strength.



Top-Hinged Vandal Resistant Screen



UNITIZED RECEPTOR

A unitized receptor system designed for cost effective ease of installation. Can be shipped KD, fully fabricated, or factory preassembled.

Advantage of Receptor Systems

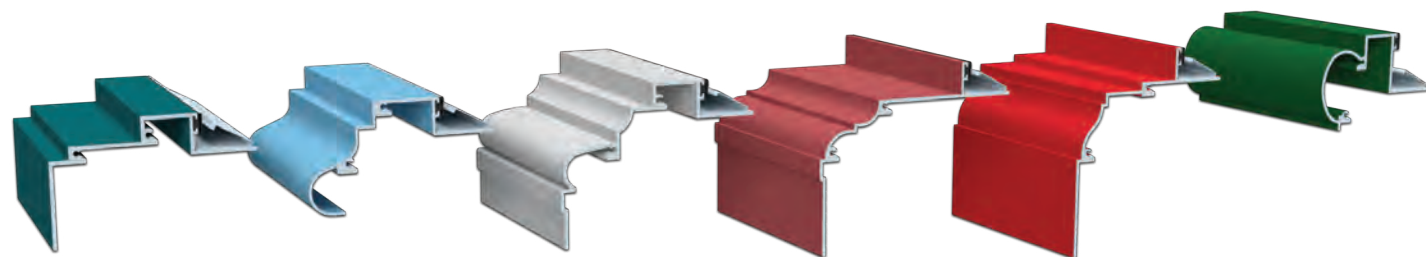
- Factory assembled & sealed
- Reduces field labor time & cost
- Self-aligning joinery for precision fit - field KD & factory
- Speeds envelope closing benefiting overall project schedule
- Factory warranty: fit - finish - water performance
- Reduces installation liability
- Reduces window damage by other trades
- Allows for faster job-site mobilization
- Allows continuous perimeter integral sealant/nail flange option

ACCESSORIES FOR EVERY SITUATION

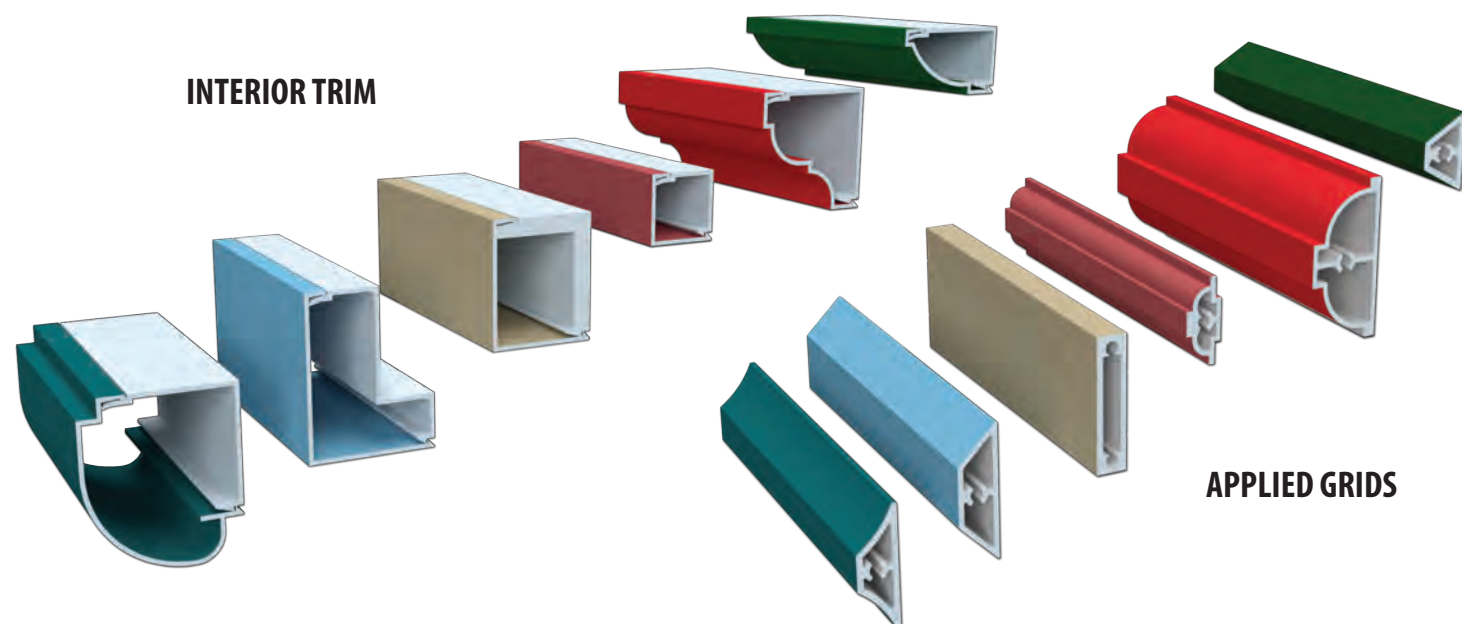
Below is a sampling of the vast array of options you have when you choose Graham Architectural Products. Please visit www.grahamwindows.com for more detail



NAIL FINS

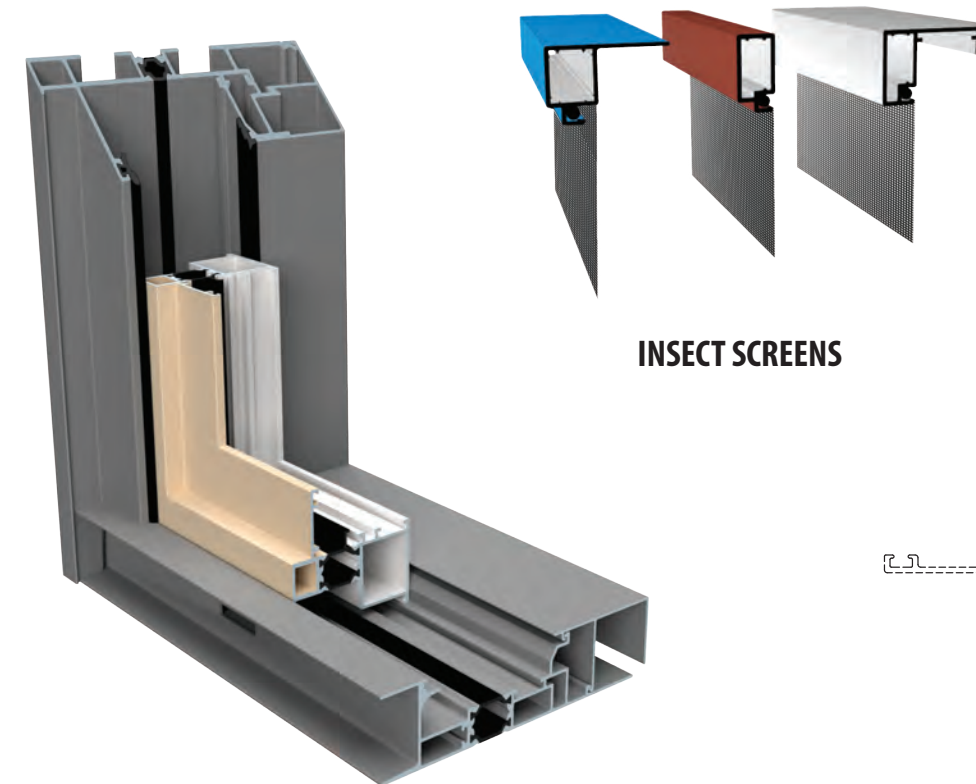


PRE-SET AND APPLIED PANNING

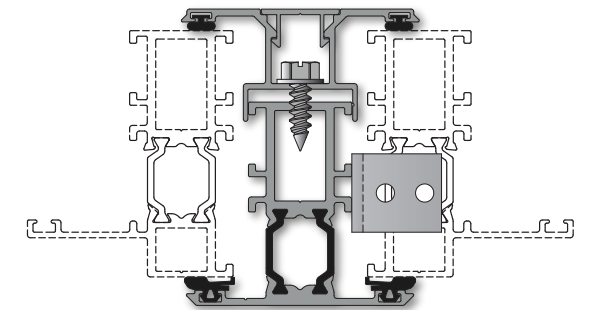


INTERIOR TRIM

APPLIED GRIDS

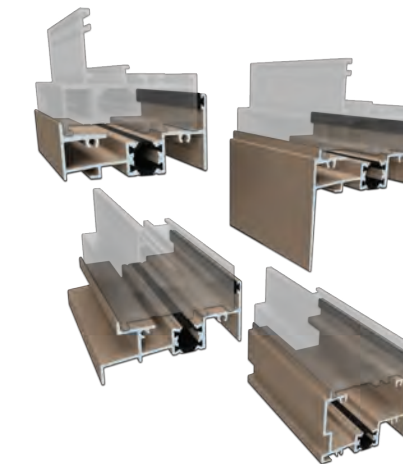


INSECT SCREENS

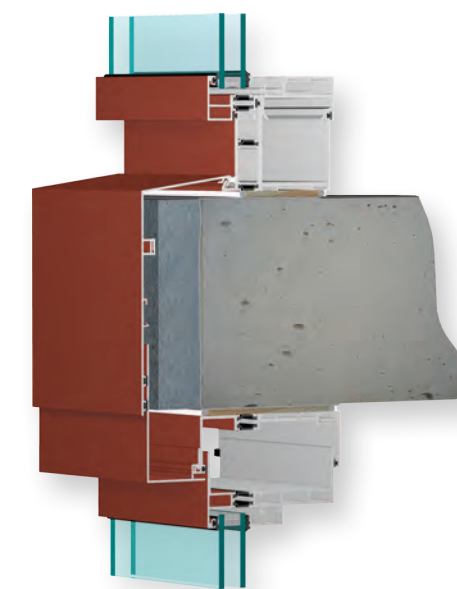


MULLIONS

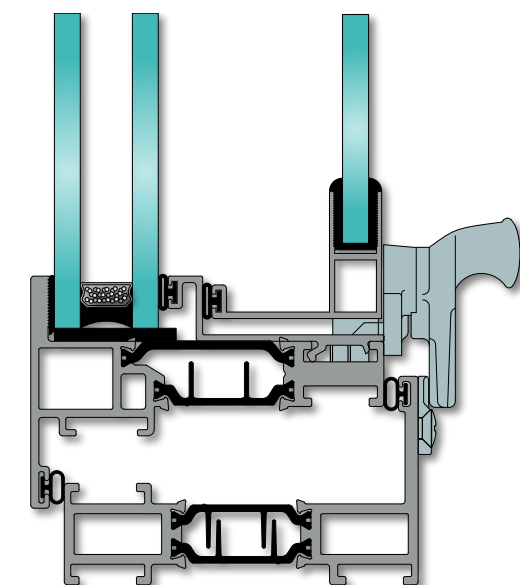
RECEPTOR SYSTEMS



SUBSILLS



SLAB COVER SYSTEMS



GUARDIAN PANELS

Our Vision

Graham Architectural Products is the company architects seek first when faced with large, complex fenestration challenges. We earn their trust by demonstrating our experience, expertise, and collaborative spirit while providing innovative solutions to their most difficult problems.

Our Mission

Graham Architectural Products manufactures the most innovative and highest quality products in the fenestration industry. We achieve this by developing customized, performance-based products and by providing solutions to architects' fenestration challenges. We earn and retain the architectural community's trust by virtue of our experience, expertise, collaborative spirit, and the reputation that we have for our work.

Our Position

For ARCHITECTS, BUILDING OWNERS, INSTALLERS, GENERAL CONTRACTORS, and DEALERS, Graham Architectural Products is the commercial and architectural grade window manufacturer that leading architects around the U.S. turn to when facing their most innovative design projects.

For more than 40 years, we have been producing, delivering and standing behind the highest quality and most innovative products in the fenestration industry. Nobody in the industry has more experience, is more reliable, or commands a higher level of trust than Graham Architectural Products.



MAIN PRODUCTION FACILITY

1551 Mount Rose Avenue
York, Pennsylvania 17403-2909
717-849-8100
(800) 755-6274
www.grahamwindows.com



METAL WAREHOUSE & ASSEMBLY

1201 Eden Rd.
York, Pennsylvania 17403-2909

WWW.GRAHAMWINDOWS.COM - MORE INFO, MORE VALUE

Visit our website for a wealth of resources including detailed product information, case studies, important forms for getting your project started with Graham Architectural Products, company and industry news, educational training courses, and more. Each of the more than 200 product pages on our website has a data sheet with up-to-date information in a manageable single-page format.



Graham Architectural Products is a part of Oldcastle BuildingEnvelope

Graham Architectural Products is a part of Oldcastle BuildingEnvelope (OBE), the industry's leading architectural glass, glazing system, and hardware and supplies provider. Together with OBE's expansive selection of entrances, storefronts, curtain walls, window walls, and much more, Graham Architectural Products can provide a comprehensive suite of solutions for projects of all sizes and complexities.

CONTACT US

Let us help you make your next project everything you imagined. Remember, "Your Vision. Our Experience." is not just a slogan but a way of doing business at Graham Architectural Products.

By leveraging our expertise, our pioneering solutions, and our unrivaled reputation, we have continuously expanded our reach, enjoying strong working relationships with our partners and customers throughout North America.

Contact your local Graham Architectural Products' representative by visiting:

www.grahamwindows.com

Use the Find Your Rep Feature,

Call us at 800-755-6274

YOUR VISION. OUR EXPERIENCE.™



*The Residences at Edison Lofts — West Orange, NJ
• Custom Historic Windows*