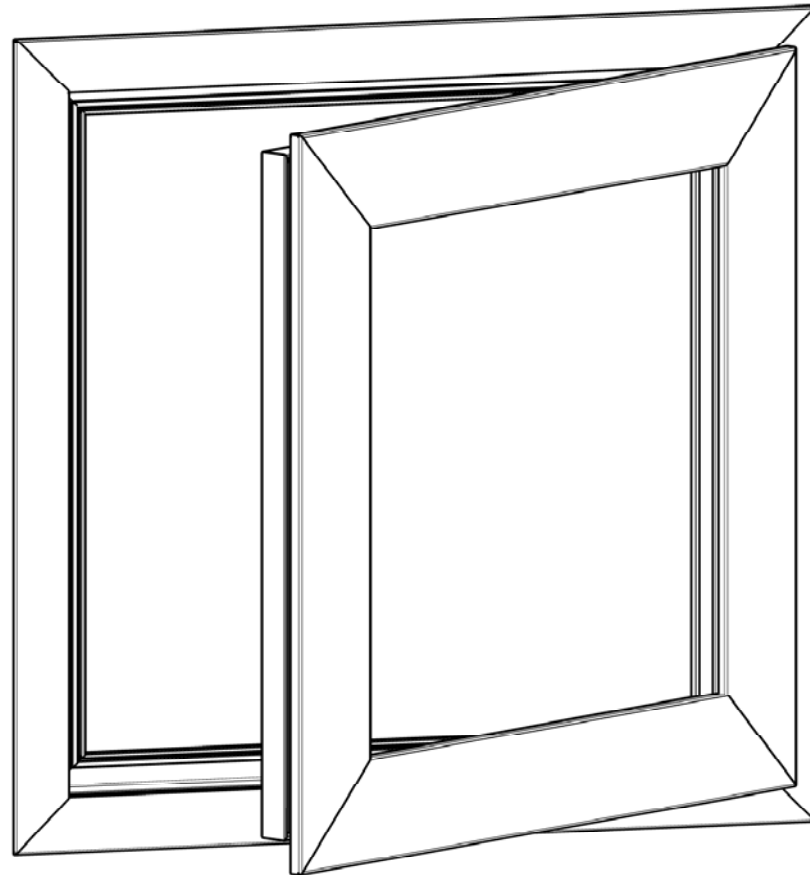


# GRAHAM ARCHITECTURAL PRODUCTS, INC.

## GT6700 CASEMENT WINDOW (LARGE & SMALL MISSILE IMPACT RATED - NON-HVHZ)



### GENERAL NOTES:

- THIS SYSTEM AND GLASS TYPES DESCRIBED HEREIN COMPLY AND HAVE BEEN DESIGNED AND TESTED IN ACCORDANCE WITH THE FLORIDA BUILDING CODE SEVENTH EDITION (2020) PER
  - ASTM E1996-17 / E1886-12
  - AAMA 506-16
- SITE-SPECIFIC REQUIRED DESIGN PRESSURES SHALL BE CALCULATED BY A LICENSED PROFESSIONAL ENGINEER FOR USE WITH THIS DOCUMENT PER CURRENT ADOPTED EDITION OF ASCE 7 AND WITH LOCAL CODE REQUIREMENTS.
- THIS SYSTEM IS IMPACT RATED FOR WIND ZONE IV, NON-HVHZ.
- DESIGN PRESSURES NOTED HEREIN ARE BASED ON MAXIMUM TESTED PRESSURES DIVIDED BY A 1.5 SAFETY FACTOR.
- NO 33-1/3% INCREASE IN ALLOWABLE STRESS HAS BEEN USED IN THE DESIGN OF THIS SYSTEM. WIND LOAD DURATION FACTOR  $C_d=1.6$  HAS BEEN USED FOR WOOD ANCHOR DESIGN.
- THE ARCHITECT/ENGINEER OF RECORD FOR THE PROJECT SUPERSTRUCTURE WITH WHICH THIS DESIGN IS USED SHALL BE RESPONSIBLE FOR THE INTEGRITY OF ALL SUPPORTING SURFACES TO THIS DESIGN WHICH SHALL BE COORDINATED BY THE PERMITTING CONTRACTOR. WOOD BUCKS (BY OTHERS) SHALL BE ANCHORED PROPERLY TO TRANSFER LOADS TO THE EXISTING STRUCTURE.
- THE SYSTEM DETAILED HEREIN IS GENERIC AND DOES NOT PROVIDE INFORMATION FOR A SPECIFIC SITE. FOR SITE CONDITIONS DIFFERENT FROM THE CONDITIONS DETAILED HEREIN, A LICENSED ENGINEER OR REGISTERED ARCHITECT SHALL PREPARE SITE SPECIFIC DOCUMENTS FOR USE IN CONJUNCTION WITH THIS DOCUMENT.
- THE CONTRACTOR IS RESPONSIBLE TO INSULATE ALL MEMBERS FROM DISSIMILAR MATERIALS TO PREVENT ELECTROLYSIS.
- FASTENERS SHALL BE CADMIUM-PLATED OR OTHERWISE CORROSION-RESISTANT MATERIAL AND SHALL COMPLY WITH "SPECIFICATIONS FOR ALUMINUM STRUCTURES" SECTION J.3.7.2 BY THE ALUMINUM ASSOCIATION, INC., & ANY APPLICABLE FEDERAL, STATE, AND/OR LOCAL CODES
- ENGINEER SEAL AFFIXED HERE TO VALIDATES STRUCTURAL DESIGN AS SHOWN ONLY. USE OF THIS SPECIFICATION BY CONTRACTOR, et. al. INDEMNIFIES & SAVES HARMLESS THIS ENGINEER FOR ALL COST & DAMAGES INCLUDING LEGAL FEES & APPELLATE FEES RESULTING FROM MATERIAL FABRICATION, SYSTEM ERECTION, & CONSTRUCTION PRACTICES BEYOND THAT WHICH IS CALLED FOR BY LOCAL, STATE, & FEDERAL CODES & FROM DEVIATIONS OF THIS PLAN.
- EXCEPT AS EXPRESSLY PROVIDED HEREIN, NO ADDITIONAL CERTIFICATIONS OR AFFIRMATIONS ARE INTENDED.
- PRESSURE VALUES ON THIS APPROVAL ARE (ASD) ALLOWABLE DESIGN PRESSURES.
- ALTERATIONS, ADDITIONS, OR OTHER MARKINGS TO THIS DOCUMENT ARE NOT PERMITTED AND INVALIDATE THIS CERTIFICATION.
- SAFEGUARDS MUST BE OBSERVED (NOT IN THIS CERTIFICATION)
- PRODUCT SHALL BE PERMANENTLY LABELED WITH A MINIMUM OF ONE LABEL PER SYSTEM CONTAINING THE FOLLOWING:  
 GRAHAM ARCHITECTURAL PRODUCTS, INC  
 1551 MT. ROSE AVE.  
 YORK, PA 17403

### SHEET INDEX

# SHEET	DESCRIPTION
01	COVER SHEET
02	ELEVATIONS
03-04	GLAZING DETAILS & GLASS LOADING TABLES
05	FRAME LOADING TABLES
06-08	ANCHOR SCHEDULE & ANCHOR LOADING TABLES
09-12	DETAILS
13-14	EXTRUSIONS / PART LIST
14	TOTAL

VISIT [ECALC.IO/38794](http://ECALC.IO/38794)

FOR HELPFUL RESOURCES, SITE SPECIFIC JOB ORDERING & MORE INFORMATION ABOUT THIS PRODUCT & RELATED SERVICES



FRANK BENNARDO, P.E.  
PE# 0046549 CA, 9885



04/19/2021

FL# 38534.1

**ENGINEERING EXPRESS**  
CORPORATE OFFICE:  
160 SW 12th AVE, SUITE 106  
DEERFIELD BEACH, FL 33442  
(954) 354-0660 | (866) 396-9999  
TEAM@ENGINEERINGEXPRESS.COM  
ENGINEERINGEXPRESS.COM

**GRAHAM ARCHITECTURAL PRODUCTS**  
1551 MT. ROSE AVENUE | YORK, PA 17403  
PH: (717) 849-8100

SERIES GT6700 CASEMENT  
FLORIDA STATEWIDE APPROVAL  
FLORIDA BUILDING CODE 7TH EDITION (2020)

REMARKS	DRWN	CHKD	DATE
FBC 2020 UPDATE	TAE	AJP	04/01/21

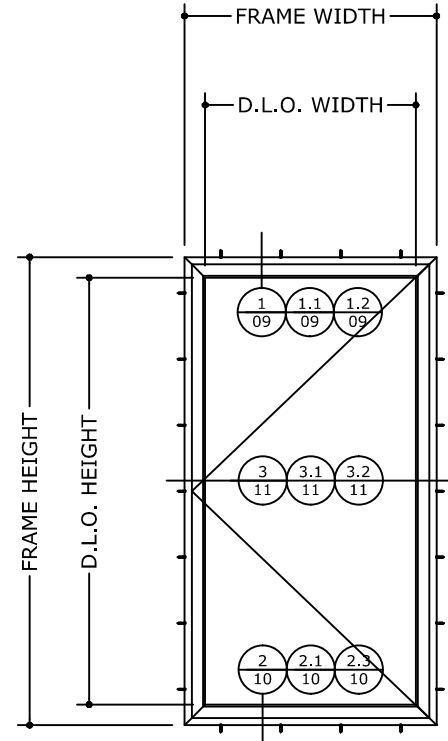
COPYRIGHT ENGINEERING EXPRESS®

21-38794

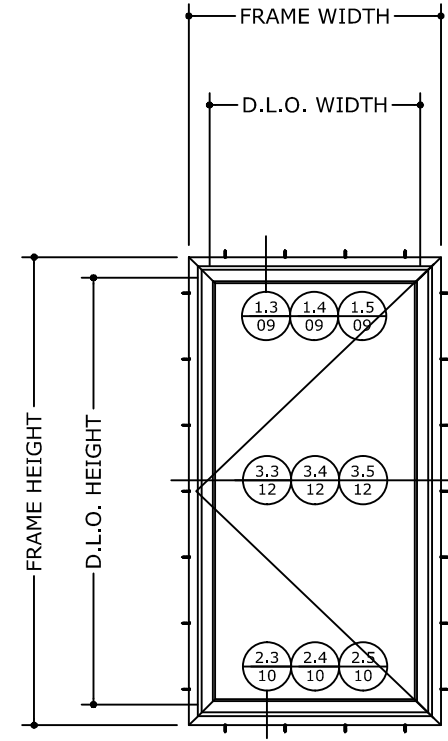
SCALE: NTS UNLESS NOTED

01 14

# ELEVATIONS



**TYPICAL CASEMENT ELEVATION**



**TYPICAL CASEMENT ELEVATION WITH RECEPTOR**

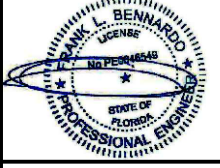
## INSTRUCTIONS TO DETERMINE DESIGN PRESSURE RATING

- STEP ①: USE THE GLASS LOADING TABLES TO DETERMINE THE ALLOWABLE PRESSURE OF THE GLASS.
- STEP ②: USE THE FRAME LOADING TABLE TO DETERMINE THE ALLOWABLE PRESSURES.
- STEP ③: THE MINIMUM VALUE BETWEEN STEP ① AND STEP ② WILL DETERMINE THE DESIGN LOAD PRESSURE FOR THE WINDOW SYSTEM.

MAX D.L.O. AREA = 17.31 SQ. FT

**MAXIMUM ALLOWABLE DESIGN PRESSURES:**  
+70 PSF, -90 PSF

FRANK BENNARDO, P.E.  
PE# 0046549 CA. 9885



04/19/2021

FL# 38534.1

**ENGINEERING EXPRESS**  
CORPORATE OFFICE:  
160 SW 12th AVE, SUITE 106  
DEERFIELD BEACH, FL 33442  
(954) 354-0660 | (866) 396-9999  
TEAM@ENGINEERINGEXPRESS.COM  
ENGINEERINGEXPRESS.COM

**GRAHAM ARCHITECTURAL PRODUCTS**  
1551 MT. ROSE AVENUE | YORK, PA 17403  
PH: (717) 849-8100

SERIES GT6700 CASEMENT  
FLORIDA STATEWIDE APPROVAL  
FLORIDA BUILDING CODE 7TH EDITION (2020)

REMARKS	DRWN	CHKD	DATE
FBC 2020 UPDATE	TAE	AJP	04/01/21

COPYRIGHT ENGINEERING EXPRESS®

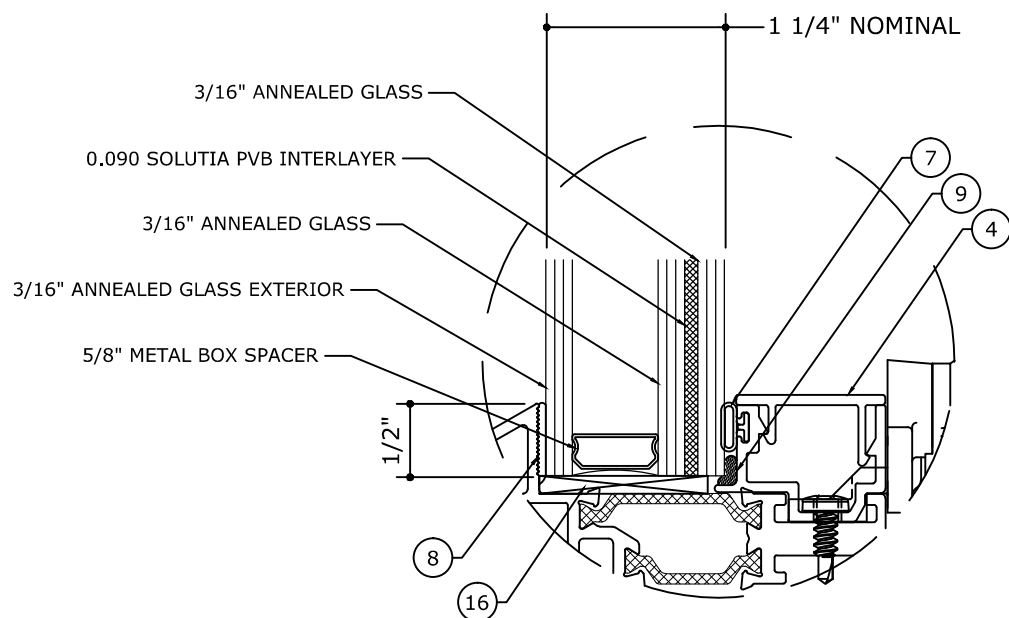
21-38794

SCALE: NTS UNLESS NOTED

02 14

# GLASS TYPES

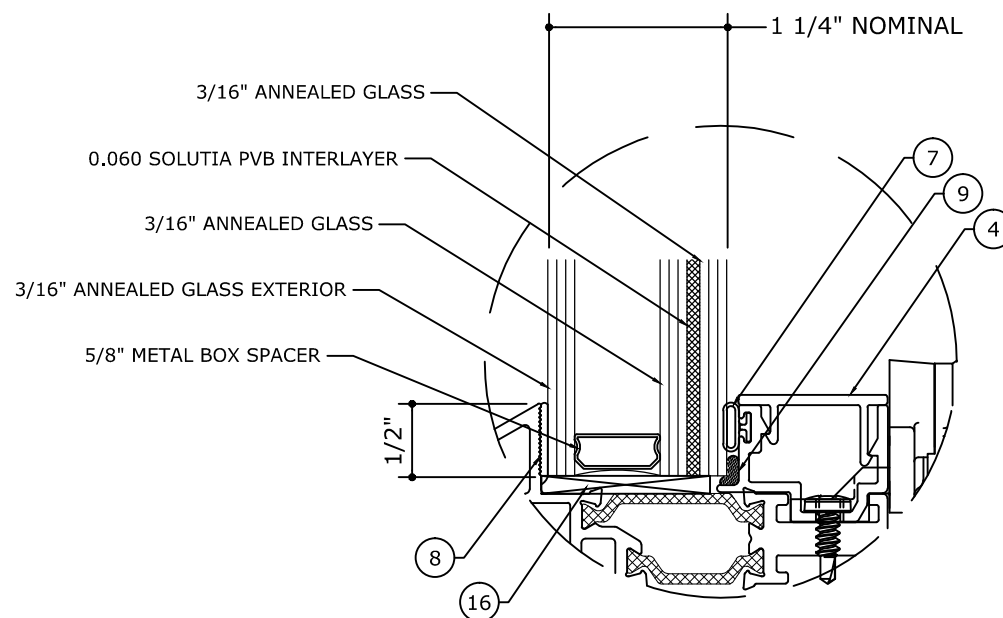
NOTE: GLASS SIZE = DLO + 1"



GLASS TYPE **G1**

**GLAZING DETAIL**

N.T.S.  
**GLASS RATING:**  
 LARGE MISSILE IMPACT  
 MISSILE LEVEL D



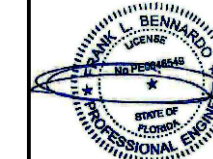
GLASS TYPE **G2**

**GLAZING DETAIL**

N.T.S.  
**GLASS RATING:**  
 SMALL MISSILE IMPACT  
 MISSILE LEVEL A

NOTE:  
 GLAZING TYPE COMPLIES WITH  
 ASTM E1300 REQUIREMENTS .

FRANK BENNARDO, P.E.  
 PE# 0046549 CA. 9885



04/19/2021

FL# 38534.1

**ENGINEERING EXPRESS**  
 CORPORATE OFFICE:  
 160 SW 12th AVE, SUITE 106  
 DEERFIELD BEACH, FL 33442  
 (954) 354-0660 | (866) 396-9999  
 TEAM@ENGINEERINGEXPRESS.COM  
 ENGINEERINGEXPRESS.COM

**GRAHAM ARCHITECTURAL PRODUCTS**  
 1551 MT. ROSE AVENUE | YORK, PA 17403  
 PH: (717) 849-8100

SERIES GT6700 CASEMENT  
 FLORIDA STATEWIDE APPROVAL  
 FLORIDA BUILDING CODE 7TH EDITION (2020)

REMARKS	DRWN	CHKD	DATE
FBC 2020 UPDATE	TAE	AJP	04/01/21

COPYRIGHT ENGINEERING EXPRESS®

21-38794

SCALE: NTS UNLESS NOTED

03

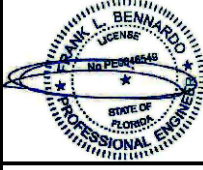
14

# GLASS LOADING TABLES

GLASS TYPES		G1 G2	
		ALLOWABLE PRESSURE	
D.L.O. HEIGHT (in)	D.L.O. WIDTH (in)	(+) P.S.F.	(-) P.S.F.
24	24	70	90
	31	70	90
	36	70	90
	42	70	90
	48	70	90
	54	70	90
	60	70	90
	70	70	90
31	24	70	90
	31	70	90
	36	70	90
	42	70	90
	48	70	90
	54	70	90
	60	70	90
	70	70	90
36	24	70	90
	31	70	90
	36	60	77
	42	60	77
	48	60	77
	60	60	77

GLASS TYPES		G1 G2	
		ALLOWABLE PRESSURE	
D.L.O. HEIGHT (in)	D.L.O. WIDTH (in)	(+) P.S.F.	(-) P.S.F.
42	24	70	90
	31	70	90
	36	60	77
	42	51	66
	48	51	66
48	24	70	90
	31	70	90
	36	60	77
	42	51	66
54	24	70	90
	31	70	90
	36	60	77
60	24	70	90
	31	70	90
	36	60	77
66	24	70	90
	31	70	90
71	24	70	90
	31	70	90

NOTE: D.L.O. WIDTH AND HEIGHT DIMENSIONS CAN BE REVERSED.



FL# 38534.1

**ENGINEERING EXPRESS**  
CORPORATE OFFICE:  
160 SW 12th AVE, SUITE 106  
DEERFIELD BEACH, FL 33442  
(954) 354-0660 | (866) 396-9999  
TEAM@ENGINEERINGEXPRESS.COM  
ENGINEERINGEXPRESS.COM

**GRAHAM ARCHITECTURAL PRODUCTS**  
1551 MT. ROSE AVENUE | YORK, PA 17403  
PH: (717) 849-8100  
SERIES GT6700 CASEMENT  
FLORIDA STATEWIDE APPROVAL  
FLORIDA BUILDING CODE 7TH EDITION (2020)

REMARKS	DRWN	CHKD	DATE
FBC 2020 UPDATE	TAE	AJP	04/01/21

COPYRIGHT ENGINEERING EXPRESS®

21-38794

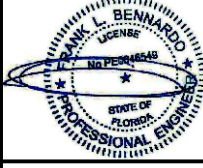
SCALE: NTS UNLESS NOTED

# FRAME LOADING TABLES

CASEMENT WINDOW ALLOWABLE PRESSURES			
FRAME WIDTH (in)	FRAME HEIGHT (in)	(+) P.S.F.	(-) P.S.F.
24	24	70	90
	30	70	90
	36	70	90
	42	70	90
	48	70	90
	54	70	90
	60	70	90
	66	70	90
	72	70	90
	78	70	90
30	24	70	90
	30	70	90
	36	70	90
	42	70	90
	48	70	90
	54	70	90
	60	70	90
	66	70	90
	72	70	90
	78	70	90
36	24	70	90
	30	70	90
	36	70	90
	42	70	90
	48	70	90
	54	70	90
	60	70	90
	66	70	90
	72	70	90
	78	70	90

CASEMENT WINDOW ALLOWABLE PRESSURES				
FRAME WIDTH (in)	FRAME HEIGHT (in)	(+) P.S.F.	(-) P.S.F.	
42	24	70	90	
	30	70	90	
	36	70	90	
	42	70	90	
	48	70	90	
	54	70	90	
	60	70	90	
	66	70	90	
	72	70	90	
	78	70	90	
48	24	70	90	
	30	70	90	
	36	70	90	
	42	70	90	
	48	70	90	
	54	70	90	
	60	61	78	
	66	61	78	
	54	24	70	90
		30	70	90
36		70	90	
42		70	90	
48		61	78	
54		54	70	
60	24	70	90	
	30	70	90	
	36	70	90	
	42	70	90	

CASEMENT WINDOW ALLOWABLE PRESSURES			
FRAME WIDTH (in)	FRAME HEIGHT (in)	(+) P.S.F.	(-) P.S.F.
60	24	70	90
	30	70	90
	36	70	90
	42	70	90
	48	61	78
	54	54	70
66	24	70	90
	30	70	90
	36	70	90
	42	70	90
	48	61	78
	72	70	90
72	24	70	90
	30	70	90
	36	70	90
	42	70	90
	48	61	78
	78	70	90
78	24	70	90
	30	70	90
	36	70	90
	42	70	90



FL# 38534.1

**ENGINEERING EXPRESS**  
CORPORATE OFFICE:  
160 SW 12th AVE, SUITE 106  
DEERFIELD BEACH, FL 33442  
(954) 354-0660 | (866) 396-9999  
TEAM@ENGINEERINGEXPRESS.COM  
ENGINEERINGEXPRESS.COM

**GRAHAM ARCHITECTURAL PRODUCTS**  
1551 MT. ROSE AVENUE | YORK, PA 17403  
PH: (717) 849-8100  
SERIES GT6700 CASEMENT  
FLORIDA STATEWIDE APPROVAL  
FLORIDA BUILDING CODE 7TH EDITION (2020)

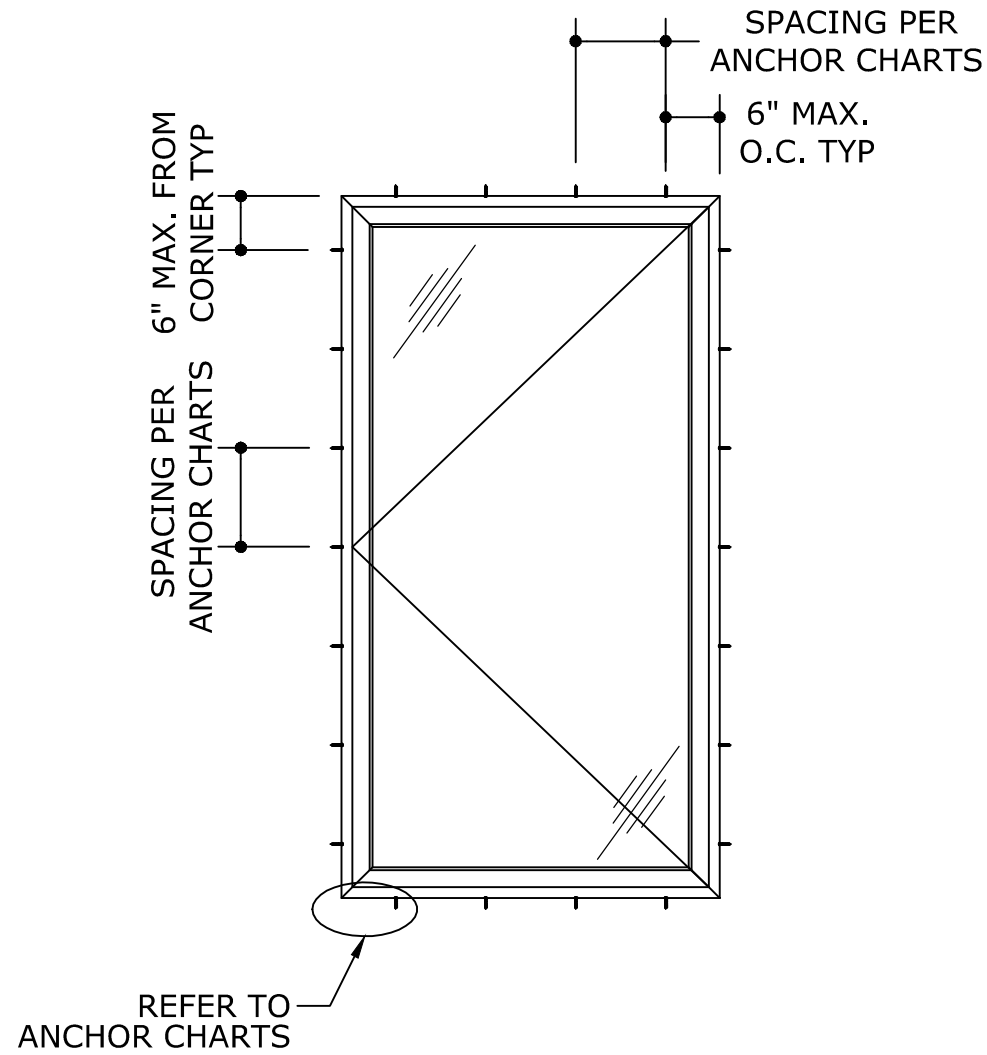
REMARKS	DRWN	CHKD	DATE
FBC 2020 UPDATE	TAE	AJP	04/01/21

COPYRIGHT ENGINEERING EXPRESS®

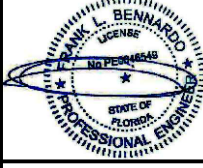
21-38794

SCALE: NTS UNLESS NOTED

# FASTENER SCHEDULE



ANCHOR SCHEDULE					
ANCHOR TYPE	ANCHOR DIAMETER	TYPE	SUBSTRATE	MIN. EMBEDMENT (IN)	MIN. EDGE DISTANCE (IN)
A	3/16"	TAPCON	POURED CONCRETE 3000 PSI MIN	1-1/4	2-1/2
B	#10-16	SELF DRILLING SCREW	16 GA. MIN. STUD ASTM A-653 GRADE 33 STEEL	3 PINCHES PASSED THREAD PLANE	1/2
			1/8" STEEL-A36 1/8" ALUMINUM-6063-T6		
C	#10	WOOD SCREW	2X WOOD BUCK (SYP#2 MIN.) G=0.55	1-1/2	3/4



FL# 38534.1



CORPORATE OFFICE:  
160 SW 12th AVE, SUITE 106  
DEERFIELD BEACH, FL 33442  
(954) 354-0660 | (866) 396-9999  
TEAM@ENGINEERINGEXPRESS.COM  
ENGINEERINGEXPRESS.COM

**GRAHAM ARCHITECTURAL PRODUCTS**  
1551 MT. ROSE AVENUE | YORK, PA 17403  
PH: (717) 849-8100

SERIES GT6700 CASEMENT  
FLORIDA STATEWIDE APPROVAL  
FLORIDA BUILDING CODE 7TH EDITION (2020)

REMARKS	DRWN	CHKD	DATE
FBC 2020 UPDATE	TAE	AJP	04/01/21

COPYRIGHT ENGINEERING EXPRESS®

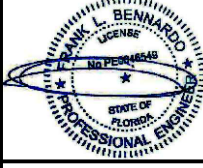
21-38794

SCALE: NTS UNLESS NOTED



# ANCHOR CHARTS

FRANK BENNARDO, P.E.  
PE# 0046549 CA, 9885



04/19/2021

FL# 38534.1

**ENGINEERING EXPRESS**  
CORPORATE OFFICE:  
160 SW 12th AVE, SUITE 106  
DEERFIELD BEACH, FL 33442  
(954) 354-0660 | (866) 396-9999  
TEAM@ENGINEERINGEXPRESS.COM  
ENGINEERINGEXPRESS.COM

**GRAHAM ARCHITECTURAL PRODUCTS**  
1551 MT. ROSE AVENUE | YORK, PA 17403  
PH: (717) 849-8100  
SERIES GT6700 CASEMENT  
FLORIDA STATEWIDE APPROVAL  
FLORIDA BUILDING CODE 7TH EDITION (2020)

REMARKS	DRWN	CHKD	DATE
FBC 2020 UPDATE	TAE	AJP	04/01/21

21-38794

SCALE: NTS UNLESS NOTED

07

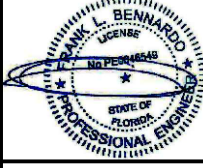
FRAME HEIGHT (IN)	FRAME WIDTH (IN)	TYPE A (CONCRETE) DESIGN PRESSURE = 90 PSF		TYPE B (METAL) DESIGN PRESSURE = 90 PSF		TYPE C (WOOD) DESIGN PRESSURE = 90 PSF	
		HEAD/SILL MAX ANCHOR SPACING (IN)	JAMBS MAX ANCHOR SPACING (IN)	HEAD/SILL MAX ANCHOR SPACING (IN)	JAMBS MAX ANCHOR SPACING (IN)	HEAD/SILL MAX ANCHOR SPACING (IN)	JAMBS MAX ANCHOR SPACING (IN)
24	24	24 O.C.	29 O.C.	25 O.C.	30 O.C.	22 O.C.	27 O.C.
	30	24 O.C.	24 O.C.	25 O.C.	25 O.C.	22 O.C.	22 O.C.
	36	24 O.C.	21 O.C.	25 O.C.	22 O.C.	22 O.C.	19 O.C.
	42	24 O.C.	19 O.C.	25 O.C.	20 O.C.	22 O.C.	17 O.C.
	48	24 O.C.	18 O.C.	25 O.C.	18 O.C.	22 O.C.	16 O.C.
	54	24 O.C.	17 O.C.	25 O.C.	17 O.C.	22 O.C.	15 O.C.
	60	24 O.C.	16 O.C.	25 O.C.	16 O.C.	22 O.C.	14 O.C.
	63	24 O.C.	16 O.C.	25 O.C.	16 O.C.	22 O.C.	14 O.C.
	66	24 O.C.	16 O.C.	25 O.C.	16 O.C.	22 O.C.	14 O.C.
	78	24 O.C.	15 O.C.	25 O.C.	16 O.C.	22 O.C.	13 O.C.
30	24	19 O.C.	29 O.C.	20 O.C.	30 O.C.	17 O.C.	27 O.C.
	30	19 O.C.	24 O.C.	20 O.C.	25 O.C.	17 O.C.	22 O.C.
	36	19 O.C.	21 O.C.	20 O.C.	22 O.C.	17 O.C.	19 O.C.
	42	19 O.C.	19 O.C.	20 O.C.	20 O.C.	17 O.C.	17 O.C.
	48	19 O.C.	18 O.C.	20 O.C.	18 O.C.	17 O.C.	16 O.C.
	54	19 O.C.	17 O.C.	20 O.C.	17 O.C.	17 O.C.	15 O.C.
	60	19 O.C.	16 O.C.	20 O.C.	16 O.C.	17 O.C.	14 O.C.
	63	19 O.C.	16 O.C.	20 O.C.	16 O.C.	17 O.C.	14 O.C.
	66	19 O.C.	16 O.C.	20 O.C.	16 O.C.	17 O.C.	14 O.C.
	78	19 O.C.	15 O.C.	20 O.C.	16 O.C.	17 O.C.	13 O.C.
36	24	16 O.C.	29 O.C.	17 O.C.	30 O.C.	14 O.C.	27 O.C.
	30	16 O.C.	24 O.C.	17 O.C.	25 O.C.	14 O.C.	22 O.C.
	36	16 O.C.	21 O.C.	17 O.C.	22 O.C.	14 O.C.	19 O.C.
	42	16 O.C.	19 O.C.	17 O.C.	20 O.C.	14 O.C.	17 O.C.
	48	16 O.C.	18 O.C.	17 O.C.	18 O.C.	14 O.C.	16 O.C.
	54	16 O.C.	17 O.C.	17 O.C.	17 O.C.	14 O.C.	15 O.C.
	60	16 O.C.	16 O.C.	17 O.C.	16 O.C.	14 O.C.	14 O.C.
	63	16 O.C.	16 O.C.	17 O.C.	16 O.C.	14 O.C.	14 O.C.
	66	16 O.C.	16 O.C.	17 O.C.	16 O.C.	14 O.C.	14 O.C.
	78	16 O.C.	15 O.C.	17 O.C.	16 O.C.	14 O.C.	13 O.C.

FRAME HEIGHT (IN)	FRAME WIDTH (IN)	TYPE A (CONCRETE) DESIGN PRESSURE = 90 PSF		TYPE B (METAL) DESIGN PRESSURE = 90 PSF		TYPE C (WOOD) DESIGN PRESSURE = 90 PSF	
		HEAD/SILL MAX ANCHOR SPACING (IN)	JAMBS MAX ANCHOR SPACING (IN)	HEAD/SILL MAX ANCHOR SPACING (IN)	JAMBS MAX ANCHOR SPACING (IN)	HEAD/SILL MAX ANCHOR SPACING (IN)	JAMBS MAX ANCHOR SPACING (IN)
42	24	14 O.C.	29 O.C.	14 O.C.	30 O.C.	12 O.C.	27 O.C.
	30	14 O.C.	24 O.C.	14 O.C.	25 O.C.	12 O.C.	22 O.C.
	36	14 O.C.	21 O.C.	14 O.C.	22 O.C.	12 O.C.	19 O.C.
	42	14 O.C.	19 O.C.	14 O.C.	20 O.C.	12 O.C.	17 O.C.
	48	14 O.C.	18 O.C.	14 O.C.	18 O.C.	12 O.C.	16 O.C.
	54	14 O.C.	17 O.C.	14 O.C.	17 O.C.	12 O.C.	15 O.C.
	60	14 O.C.	16 O.C.	14 O.C.	16 O.C.	12 O.C.	14 O.C.
	63	14 O.C.	16 O.C.	14 O.C.	16 O.C.	12 O.C.	14 O.C.
	66	14 O.C.	16 O.C.	14 O.C.	16 O.C.	12 O.C.	14 O.C.
	78	14 O.C.	15 O.C.	14 O.C.	16 O.C.	12 O.C.	13 O.C.
48	24	14 O.C.	29 O.C.	13 O.C.	30 O.C.	12 O.C.	27 O.C.
	30	14 O.C.	24 O.C.	13 O.C.	25 O.C.	12 O.C.	22 O.C.
	36	12 O.C.	21 O.C.	13 O.C.	22 O.C.	10 O.C.	19 O.C.
	42	12 O.C.	19 O.C.	13 O.C.	20 O.C.	10 O.C.	17 O.C.
	48	12 O.C.	18 O.C.	13 O.C.	18 O.C.	10 O.C.	16 O.C.
	54	12 O.C.	17 O.C.	13 O.C.	17 O.C.	10 O.C.	15 O.C.
	60	12 O.C.	16 O.C.	13 O.C.	16 O.C.	10 O.C.	14 O.C.
	63	12 O.C.	16 O.C.	13 O.C.	16 O.C.	10 O.C.	14 O.C.
	66	12 O.C.	16 O.C.	13 O.C.	16 O.C.	10 O.C.	14 O.C.
	78	12 O.C.	15 O.C.	13 O.C.	16 O.C.	10 O.C.	13 O.C.
54	24	14 O.C.	29 O.C.	16 O.C.	30 O.C.	12 O.C.	27 O.C.
	30	14 O.C.	24 O.C.	16 O.C.	25 O.C.	12 O.C.	22 O.C.
	36	12 O.C.	21 O.C.	13 O.C.	22 O.C.	10 O.C.	19 O.C.
	42	12 O.C.	19 O.C.	13 O.C.	20 O.C.	10 O.C.	17 O.C.
	48	12 O.C.	18 O.C.	13 O.C.	18 O.C.	10 O.C.	16 O.C.
	54	12 O.C.	17 O.C.	13 O.C.	17 O.C.	10 O.C.	15 O.C.
	60	12 O.C.	16 O.C.	13 O.C.	16 O.C.	10 O.C.	14 O.C.
	63	12 O.C.	16 O.C.	13 O.C.	16 O.C.	10 O.C.	14 O.C.
	66	12 O.C.	16 O.C.	13 O.C.	16 O.C.	10 O.C.	14 O.C.
	78	12 O.C.	15 O.C.	13 O.C.	16 O.C.	10 O.C.	13 O.C.

C:\Users\thayer\OneDrive - Engineering Express\Desktop\21-38794 GT6700 Casement (2020 FSA).dwg thayer 04/19/2021 - 6:06pm

# ANCHOR CHARTS

FRANK BENNARDO, P.E.  
PE# 0046549 CA, 9885



04/19/2021

FL# 38534.1

**ENGINEERING EXPRESS**  
CORPORATE OFFICE:  
160 SW 12th AVE, SUITE 106  
DEERFIELD BEACH, FL 33442  
(954) 354-0660 | (866) 396-9999  
TEAM@ENGINEERINGEXPRESS.COM  
ENGINEERINGEXPRESS.COM

**GRAHAM ARCHITECTURAL PRODUCTS**  
1551 MT. ROSE AVENUE | YORK, PA 17403  
PH: (717) 849-8100  
SERIES GT6700 CASEMENT  
FLORIDA STATEWIDE APPROVAL  
FLORIDA BUILDING CODE 7TH EDITION (2020)

REMARKS	DRWN	CHKD	DATE
FBC 2020 UPDATE	TAE	AJP	04/01/21

COPYRIGHT ENGINEERING EXPRESS®  
**21-38794**

SCALE: NTS UNLESS NOTED

08

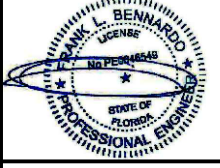
FRAME HEIGHT (IN)	FRAME WIDTH (IN)	TYPE A (CONCRETE) DESIGN PRESSURE = 90 PSF		TYPE B (METAL) DESIGN PRESSURE = 90 PSF		TYPE C (WOOD) DESIGN PRESSURE = 90 PSF	
		HEAD/SILL MAX ANCHOR SPACING (IN)	JAMBS MAX ANCHOR SPACING (IN)	HEAD/SILL MAX ANCHOR SPACING (IN)	JAMBS MAX ANCHOR SPACING (IN)	HEAD/SILL MAX ANCHOR SPACING (IN)	JAMBS MAX ANCHOR SPACING (IN)
60	24	14 O.C.	29 O.C.	16 O.C.	30 O.C.	12 O.C.	27 O.C.
	30	14 O.C.	24 O.C.	16 O.C.	25 O.C.	12 O.C.	22 O.C.
	36	12 O.C.	21 O.C.	13 O.C.	22 O.C.	10 O.C.	19 O.C.
	42	12 O.C.	19 O.C.	13 O.C.	20 O.C.	10 O.C.	17 O.C.
	48	12 O.C.	18 O.C.	13 O.C.	18 O.C.	10 O.C.	16 O.C.
	54	12 O.C.	17 O.C.	13 O.C.	17 O.C.	10 O.C.	15 O.C.
	60	12 O.C.	16 O.C.	13 O.C.	16 O.C.	10 O.C.	14 O.C.
	63	12 O.C.	16 O.C.	13 O.C.	16 O.C.	10 O.C.	14 O.C.
	66	12 O.C.	16 O.C.	13 O.C.	16 O.C.	10 O.C.	14 O.C.
	78	12 O.C.	15 O.C.	13 O.C.	16 O.C.	10 O.C.	13 O.C.
63	24	14 O.C.	29 O.C.	16 O.C.	30 O.C.	12 O.C.	27 O.C.
	30	14 O.C.	24 O.C.	16 O.C.	25 O.C.	12 O.C.	22 O.C.
	36	12 O.C.	21 O.C.	13 O.C.	22 O.C.	10 O.C.	19 O.C.
	42	12 O.C.	19 O.C.	13 O.C.	20 O.C.	10 O.C.	17 O.C.
	48	12 O.C.	18 O.C.	13 O.C.	18 O.C.	10 O.C.	16 O.C.
	54	12 O.C.	17 O.C.	13 O.C.	17 O.C.	10 O.C.	15 O.C.
	60	12 O.C.	16 O.C.	13 O.C.	16 O.C.	10 O.C.	14 O.C.
	63	12 O.C.	16 O.C.	13 O.C.	16 O.C.	10 O.C.	14 O.C.
	66	12 O.C.	16 O.C.	13 O.C.	16 O.C.	10 O.C.	14 O.C.
	78	12 O.C.	15 O.C.	13 O.C.	16 O.C.	10 O.C.	13 O.C.
66	24	14 O.C.	29 O.C.	16 O.C.	30 O.C.	12 O.C.	27 O.C.
	30	14 O.C.	24 O.C.	16 O.C.	25 O.C.	12 O.C.	22 O.C.
	36	12 O.C.	21 O.C.	13 O.C.	22 O.C.	10 O.C.	19 O.C.
	42	12 O.C.	19 O.C.	13 O.C.	20 O.C.	10 O.C.	17 O.C.
	48	12 O.C.	18 O.C.	13 O.C.	18 O.C.	10 O.C.	16 O.C.
	54	12 O.C.	17 O.C.	13 O.C.	17 O.C.	10 O.C.	15 O.C.
	60	12 O.C.	16 O.C.	13 O.C.	16 O.C.	10 O.C.	14 O.C.
	63	12 O.C.	16 O.C.	13 O.C.	16 O.C.	10 O.C.	14 O.C.
	66	12 O.C.	16 O.C.	13 O.C.	16 O.C.	10 O.C.	14 O.C.
	78	12 O.C.	15 O.C.	13 O.C.	16 O.C.	10 O.C.	13 O.C.

FRAME HEIGHT (IN)	FRAME WIDTH (IN)	TYPE A (CONCRETE) DESIGN PRESSURE = 90 PSF		TYPE B (METAL) DESIGN PRESSURE = 90 PSF		TYPE C (WOOD) DESIGN PRESSURE = 90 PSF	
		HEAD/SILL MAX ANCHOR SPACING (IN)	JAMBS MAX ANCHOR SPACING (IN)	HEAD/SILL MAX ANCHOR SPACING (IN)	JAMBS MAX ANCHOR SPACING (IN)	HEAD/SILL MAX ANCHOR SPACING (IN)	JAMBS MAX ANCHOR SPACING (IN)
72	24	14 O.C.	29 O.C.	16 O.C.	30 O.C.	12 O.C.	27 O.C.
	30	14 O.C.	24 O.C.	16 O.C.	25 O.C.	12 O.C.	22 O.C.
	36	12 O.C.	21 O.C.	13 O.C.	22 O.C.	10 O.C.	19 O.C.
	42	12 O.C.	19 O.C.	13 O.C.	20 O.C.	10 O.C.	17 O.C.
	48	12 O.C.	18 O.C.	13 O.C.	18 O.C.	10 O.C.	16 O.C.
	54	12 O.C.	17 O.C.	13 O.C.	17 O.C.	10 O.C.	15 O.C.
	60	12 O.C.	16 O.C.	13 O.C.	16 O.C.	10 O.C.	14 O.C.
	63	12 O.C.	16 O.C.	13 O.C.	16 O.C.	10 O.C.	14 O.C.
	66	12 O.C.	16 O.C.	13 O.C.	16 O.C.	10 O.C.	14 O.C.
	78	12 O.C.	15 O.C.	13 O.C.	16 O.C.	10 O.C.	13 O.C.
75	24	14 O.C.	29 O.C.	16 O.C.	30 O.C.	12 O.C.	27 O.C.
	30	14 O.C.	24 O.C.	16 O.C.	25 O.C.	12 O.C.	22 O.C.
	36	12 O.C.	21 O.C.	13 O.C.	22 O.C.	10 O.C.	19 O.C.
	42	12 O.C.	19 O.C.	13 O.C.	20 O.C.	10 O.C.	17 O.C.
	48	12 O.C.	18 O.C.	13 O.C.	18 O.C.	10 O.C.	16 O.C.
	54	12 O.C.	17 O.C.	13 O.C.	17 O.C.	10 O.C.	15 O.C.
	60	12 O.C.	16 O.C.	13 O.C.	16 O.C.	10 O.C.	14 O.C.
	63	12 O.C.	16 O.C.	13 O.C.	16 O.C.	10 O.C.	14 O.C.
	66	12 O.C.	16 O.C.	13 O.C.	16 O.C.	10 O.C.	14 O.C.
	78	12 O.C.	15 O.C.	13 O.C.	16 O.C.	10 O.C.	13 O.C.
78	24	14 O.C.	28 O.C.	16 O.C.	30 O.C.	12 O.C.	26 O.C.
	30	14 O.C.	24 O.C.	16 O.C.	25 O.C.	12 O.C.	22 O.C.
	36	12 O.C.	21 O.C.	13 O.C.	22 O.C.	10 O.C.	19 O.C.
	42	12 O.C.	19 O.C.	13 O.C.	20 O.C.	10 O.C.	17 O.C.
	48	12 O.C.	17 O.C.	13 O.C.	18 O.C.	10 O.C.	15 O.C.
	54	12 O.C.	16 O.C.	13 O.C.	17 O.C.	10 O.C.	14 O.C.
	60	12 O.C.	16 O.C.	13 O.C.	16 O.C.	10 O.C.	14 O.C.
	63	12 O.C.	15 O.C.	13 O.C.	16 O.C.	10 O.C.	13 O.C.
	66	12 O.C.	15 O.C.	13 O.C.	16 O.C.	10 O.C.	13 O.C.
	78	12 O.C.	15 O.C.	13 O.C.	16 O.C.	10 O.C.	13 O.C.



# HEAD DETAILS

FRANK BENNARDO, P.E.  
PE# 0046549 CA, 9885



04/19/2021

FL# 38534.1

**ENGINEERING EXPRESS**  
CORPORATE OFFICE:  
160 SW 12th AVE, SUITE 106  
DEERFIELD BEACH, FL 33442  
(954) 354-0660 | (866) 396-9999  
TEAM@ENGINEERINGEXPRESS.COM  
ENGINEERINGEXPRESS.COM

**GRAHAM ARCHITECTURAL PRODUCTS**  
1551 MT. ROSE AVENUE | YORK, PA 17403  
PH: (717) 849-8100  
SERIES GT6700 CASEMENT  
FLORIDA STATEWIDE APPROVAL  
FLORIDA BUILDING CODE 7TH EDITION (2020)

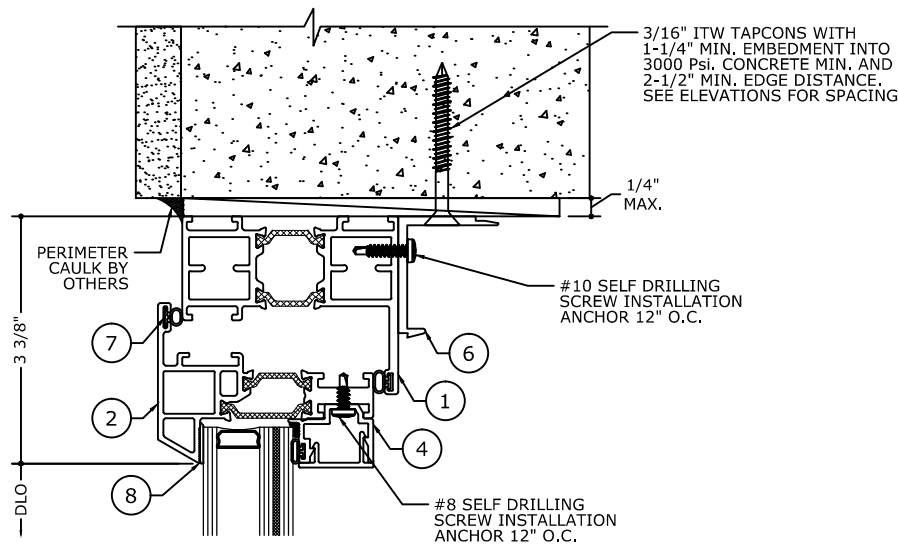
REMARKS	DRWN	CHKD	DATE
FBC 2020 UPDATE	TAE	AJP	04/01/21

COPYRIGHT ENGINEERING EXPRESS®

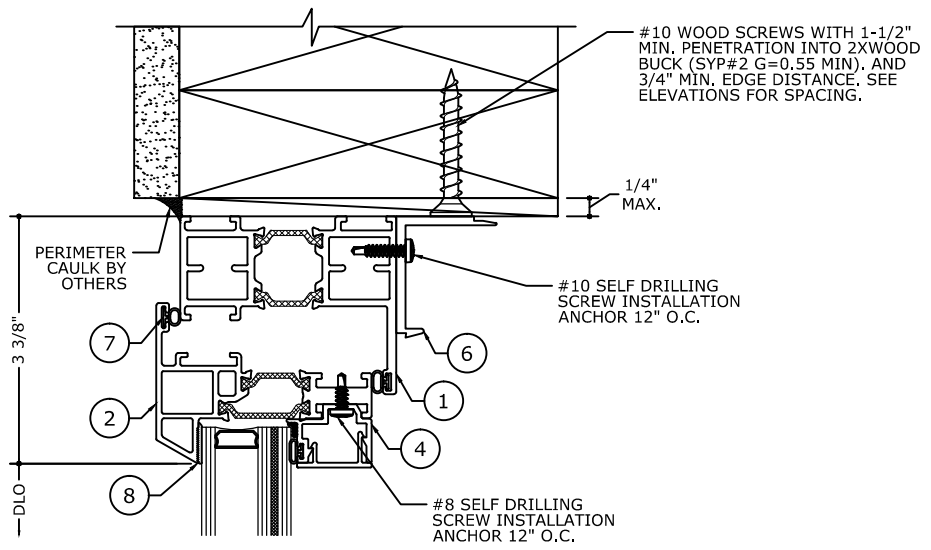
21-38794

SCALE: NTS UNLESS NOTED

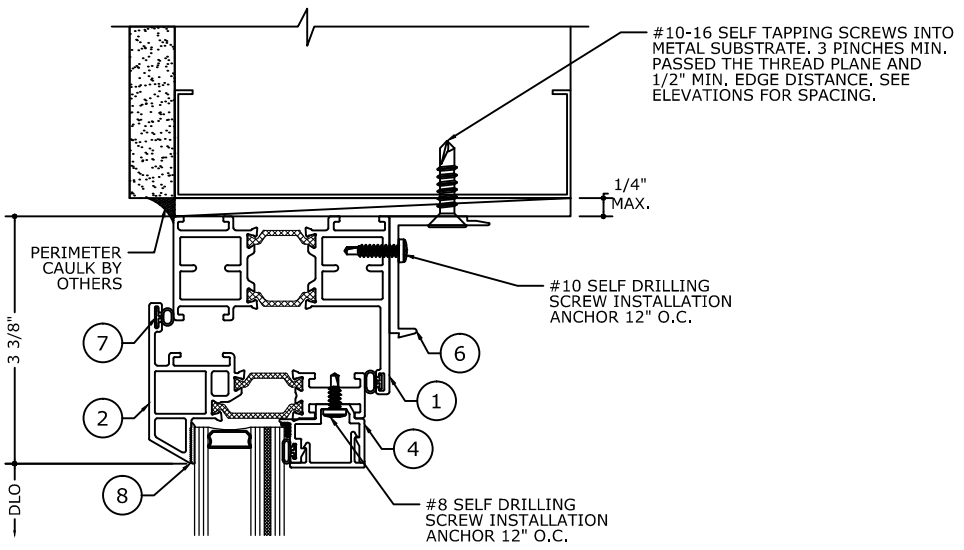
14



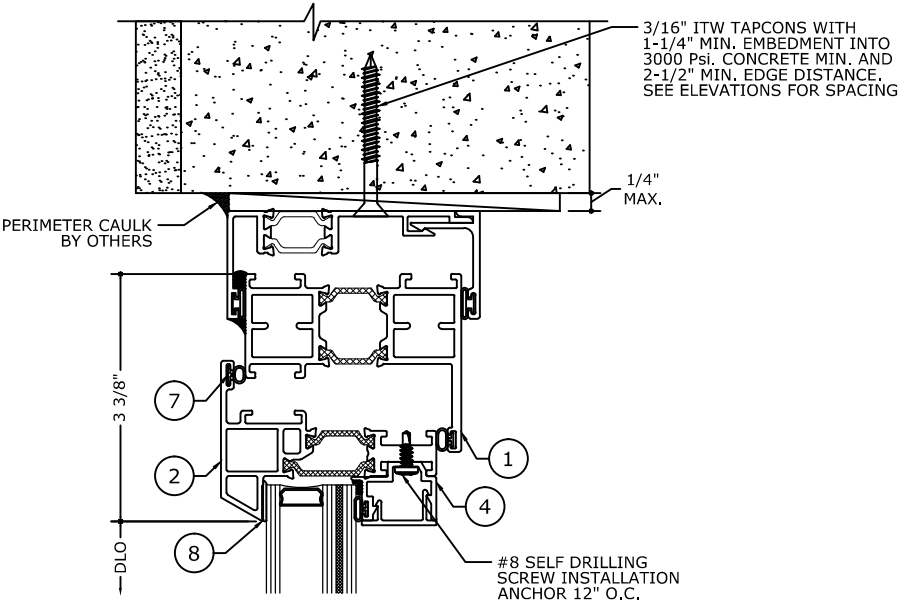
**1 HEAD DETAIL**  
PRE-SET PANNING  
SCREW APPLIED BEAD



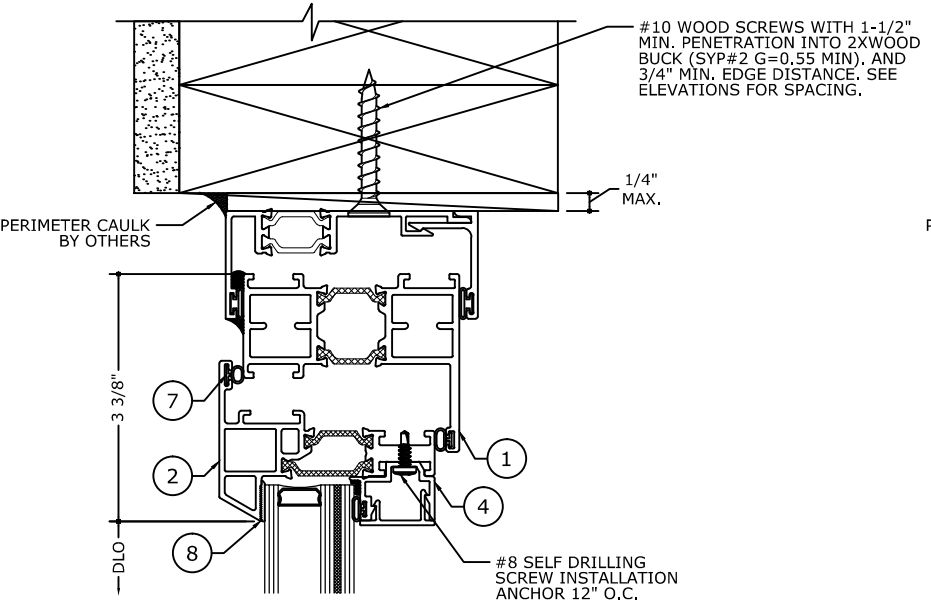
**1.1 HEAD DETAIL**  
PRE-SET PANNING  
SCREW APPLIED BEAD



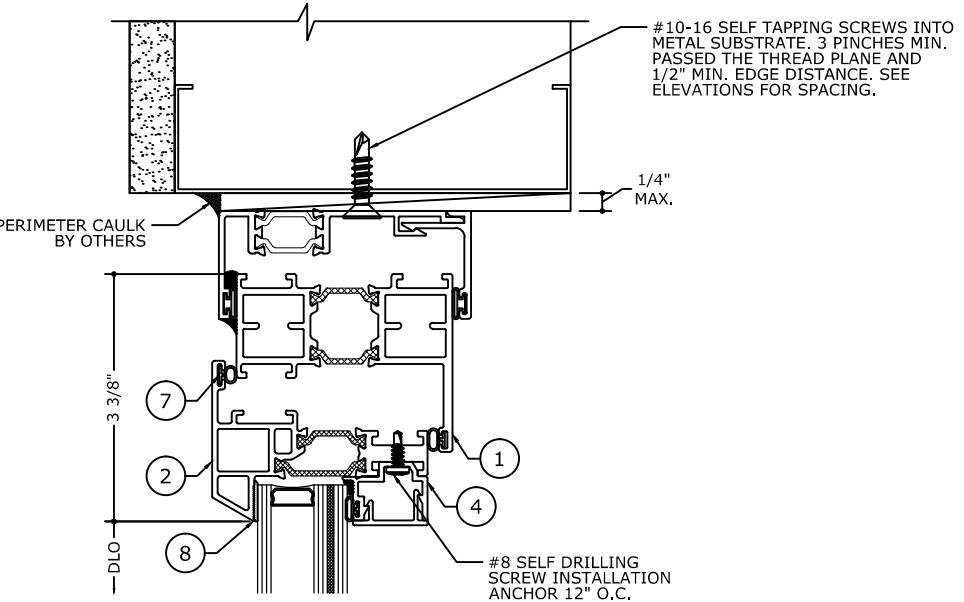
**1.2 HEAD DETAIL**  
PRE-SET PANNING  
SCREW APPLIED BEAD



**1.3 HEAD DETAIL**  
RECEPTOR



**1.4 HEAD DETAIL**  
RECEPTOR



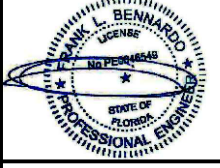
**1.5 HEAD DETAIL**  
RECEPTOR

NOTE: REFER TO SYSTEM INSTALLATION MANUAL FOR FABRICATION AND ASSEMBLY INSTRUCTIONS.

C:\Users\thayer\OneDrive - Engineering Express\Desktop\21-38794 GT6700 Casement (2020 FSA).dwg thayer 04/19/2021 - 6:06pm

# SILL DETAILS

FRANK BENNARDO, P.E.  
PE# 0046549 CA, 9885

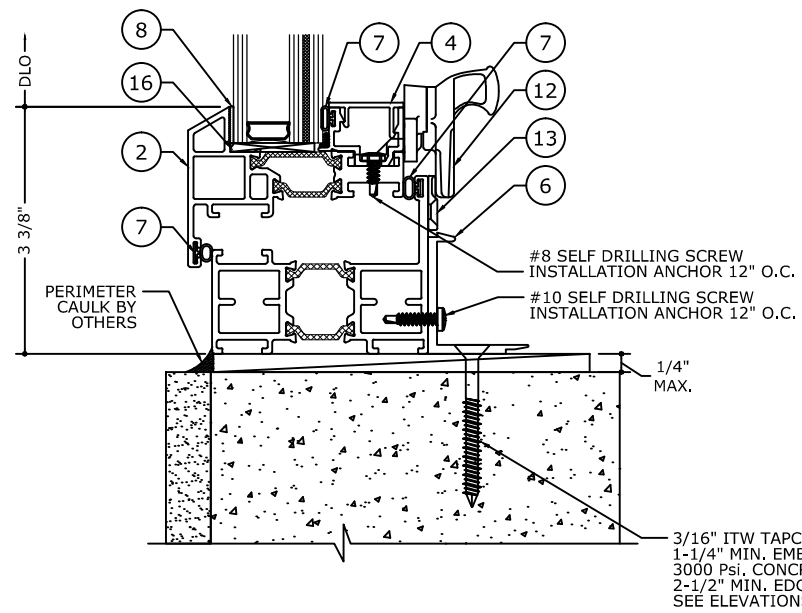


04/19/2021

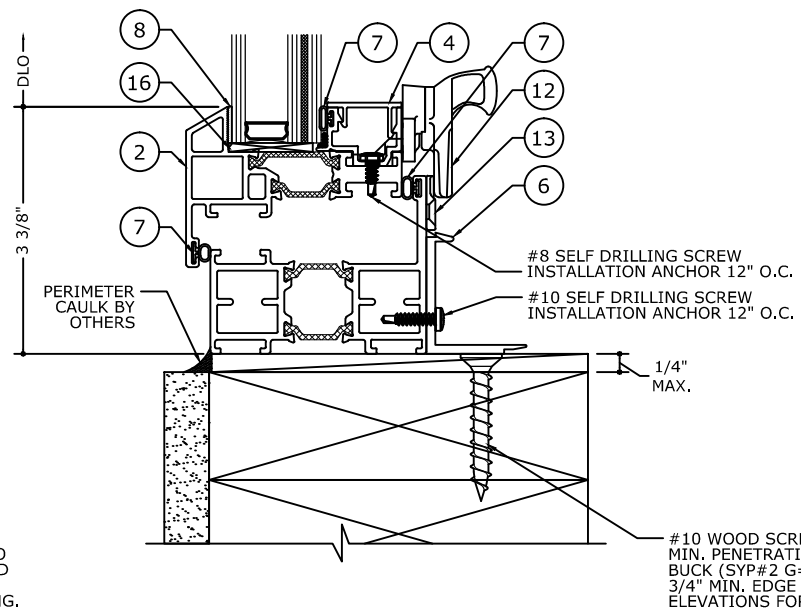
FL# 38534.1

**ENGINEERING EXPRESS**  
CORPORATE OFFICE:  
160 SW 12th AVE, SUITE 106  
DEERFIELD BEACH, FL 33442  
TEAM@ENGINEERINGEXPRESS.COM  
(954) 354-0660 | (866) 396-9999  
ENGINEERINGEXPRESS.COM

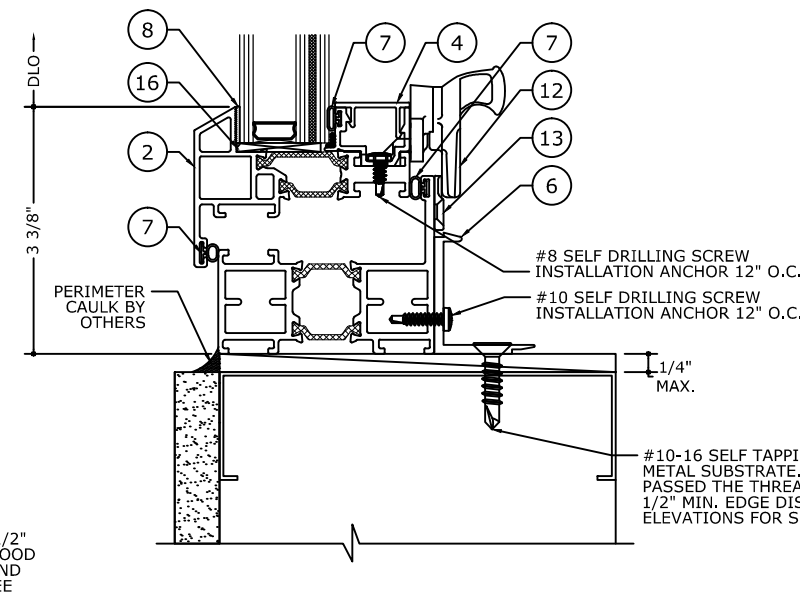
**GRAHAM ARCHITECTURAL PRODUCTS**  
1551 MT. ROSE AVENUE | YORK, PA 17403  
PH: (717) 849-8100  
SERIES GT6700 CASEMENT  
FLORIDA STATEWIDE APPROVAL  
FLORIDA BUILDING CODE 7TH EDITION (2020)



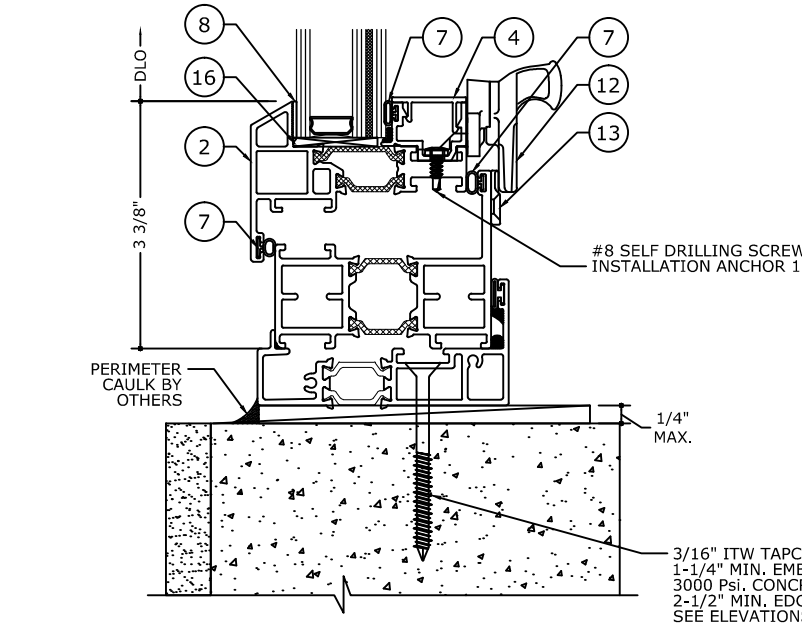
**2 SILL DETAIL**  
PRE-SET PANNING  
SCREW APPLIED BEAD



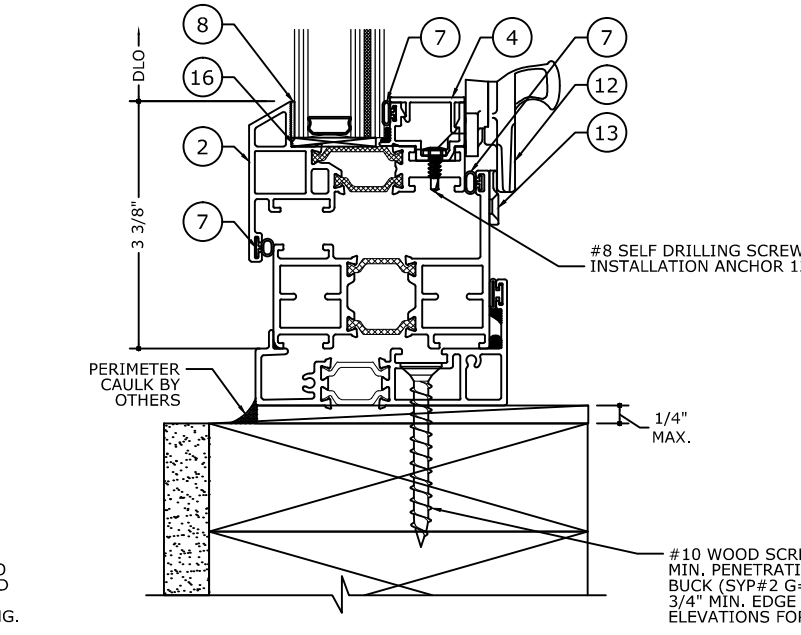
**2.1 SILL DETAIL**  
PRE-SET PANNING  
SCREW APPLIED BEAD



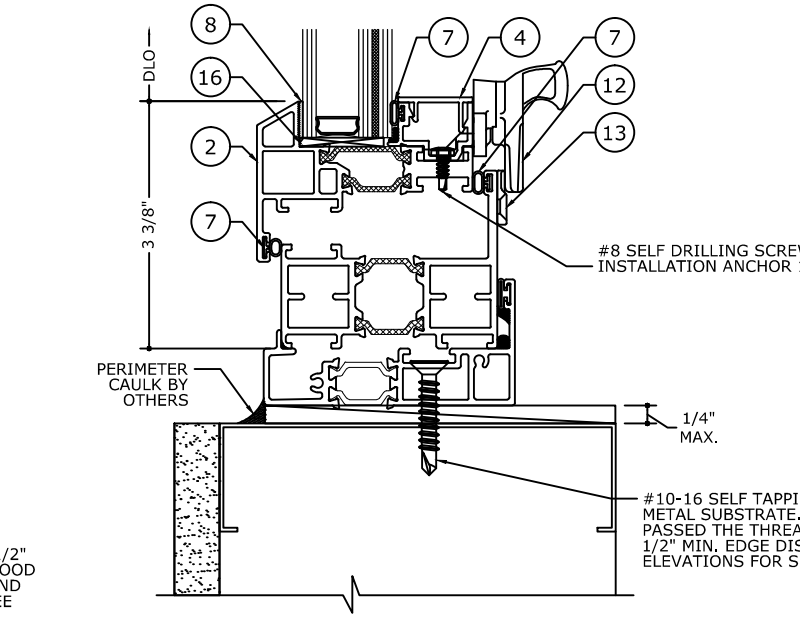
**2.2 SILL DETAIL**  
PRE-SET PANNING  
SCREW APPLIED BEAD



**2.3 SILL DETAIL**  
RECEPTOR



**2.4 SILL DETAIL**  
RECEPTOR



**2.5 SILL DETAIL**  
RECEPTOR

NOTE: REFER TO SYSTEM INSTALLATION MANUAL FOR FABRICATION AND ASSEMBLY INSTRUCTIONS.

REMARKS	DRWN	CHKD	DATE
FBC 2020 UPDATE	TAE	AJP	04/01/21

COPYRIGHT ENGINEERING EXPRESS®

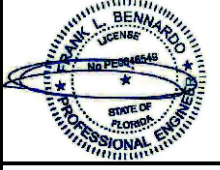
21-38794

SCALE: NTS UNLESS NOTED

C:\Users\thayer\OneDrive - Engineering Express\Desktop\21-38794 GT6700 Casement (2020 FSA).dwg thayer 04/19/2021 - 6:06pm

# VERTICAL JAMB DETAILS

FRANK BENNARDO, P.E.  
PE# 0046549 CA. 9885

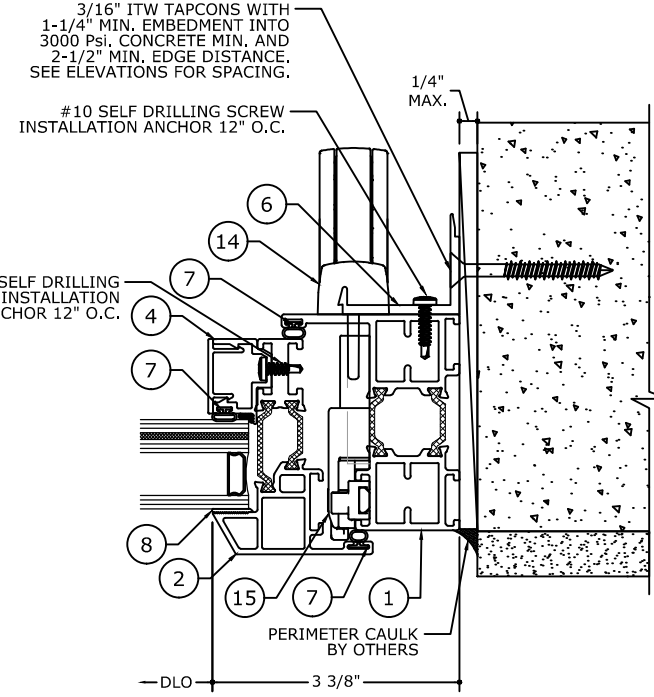
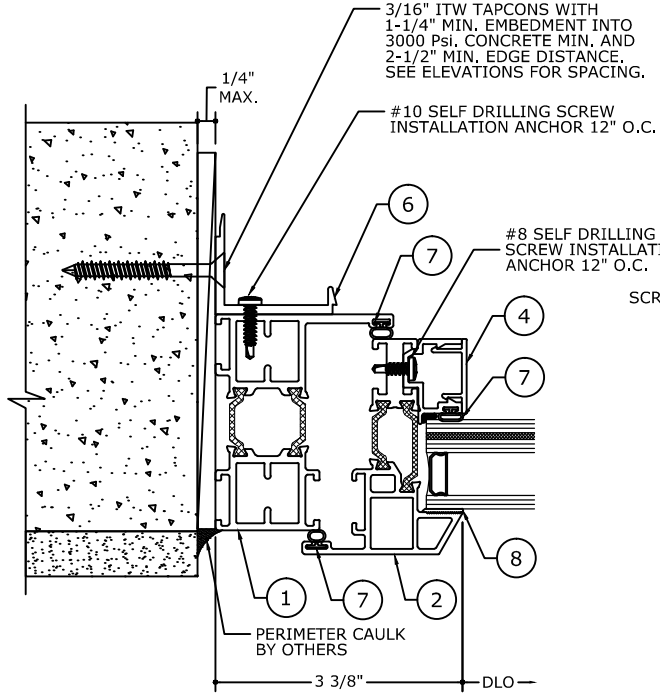


04/19/2021

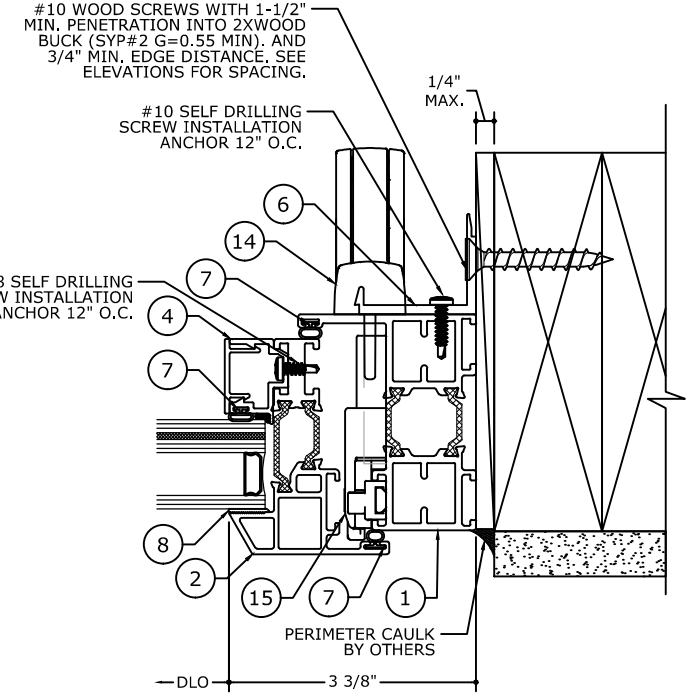
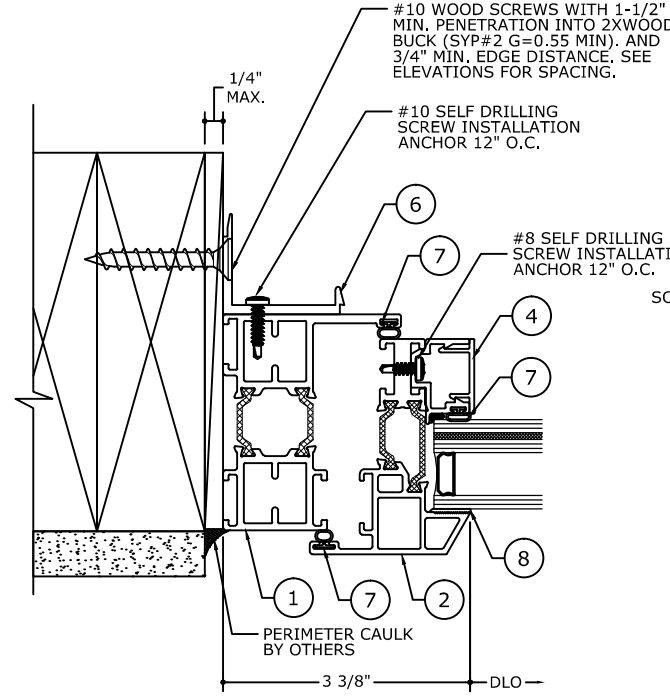
FL# 38534.1

**ENGINEERING EXPRESS**  
CORPORATE OFFICE:  
160 SW 12th AVE, SUITE 106  
DEERFIELD BEACH, FL 33442  
(954) 354-0660 | (866) 396-9999  
TEAM@ENGINEERINGEXPRESS.COM  
ENGINEERINGEXPRESS.COM

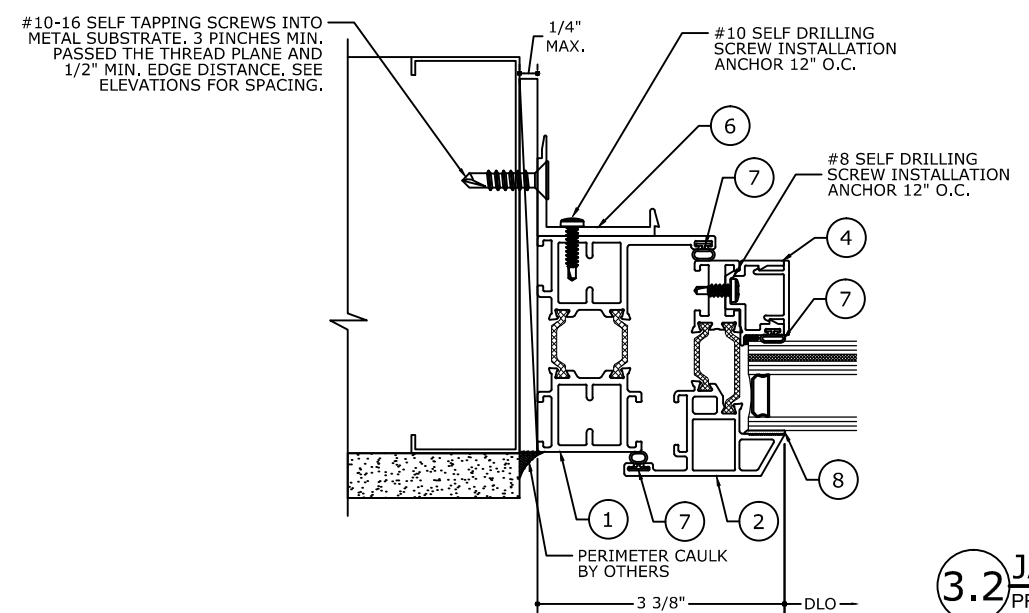
**GRAHAM ARCHITECTURAL PRODUCTS**  
1551 MT. ROSE AVENUE | YORK, PA 17403  
PH: (717) 849-8100  
SERIES GT6700 CASEMENT  
FLORIDA STATEWIDE APPROVAL  
FLORIDA BUILDING CODE 7TH EDITION (2020)



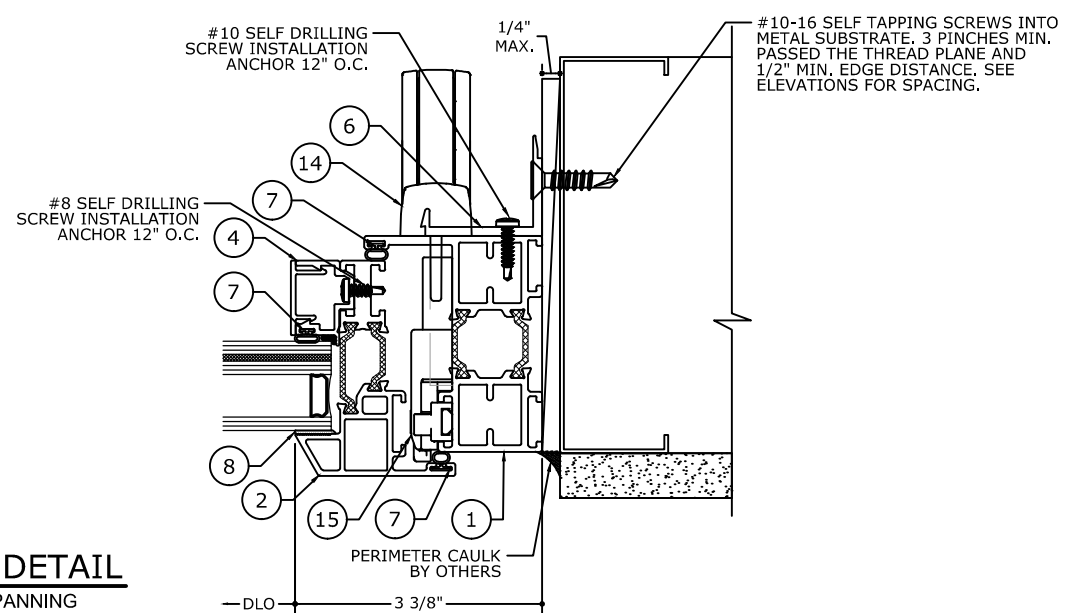
**3 JAMB DETAIL**  
PRE-SET PANNING  
SCREW APPLIED BEAD



**3.1 JAMB DETAIL**  
PRE-SET PANNING  
SCREW APPLIED BEAD



**3.2 JAMB DETAIL**  
PRE-SET PANNING  
SCREW APPLIED BEAD



NOTE: REFER TO SYSTEM INSTALLATION MANUAL FOR FABRICATION AND ASSEMBLY INSTRUCTIONS.

REMARKS	DRWN	CHKD	DATE
FBC 2020 UPDATE	TAE	AJP	04/01/21

COPYRIGHT ENGINEERING EXPRESS®

21-38794

SCALE: NTS UNLESS NOTED

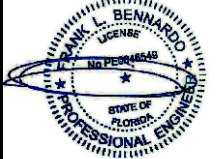
11

C:\Users\thayer\OneDrive - Engineering Express\Desktop\21-38794 GT6700 Casement (2020 FSA).dwg thayer 04/19/2021 - 6:06pm



# VERTICAL JAMB DETAILS

FRANK BENNARDO, P.E.  
PE# 0046549 CA, 9885



04/19/2021

FL# 38534.1

**ENGINEERING EXPRESS**  
CORPORATE OFFICE:  
160 SW 12th AVE, SUITE 106  
DEERFIELD BEACH, FL 33442  
TEAM@ENGINEERINGEXPRESS.COM  
(954) 354-0660 | (866) 396-9999  
ENGINEERINGEXPRESS.COM

**GRAHAM ARCHITECTURAL PRODUCTS**  
1551 MT. ROSE AVENUE | YORK, PA 17403  
PH: (717) 849-8100  
SERIES GT6700 CASEMENT  
FLORIDA STATEWIDE APPROVAL  
FLORIDA BUILDING CODE 7TH EDITION (2020)

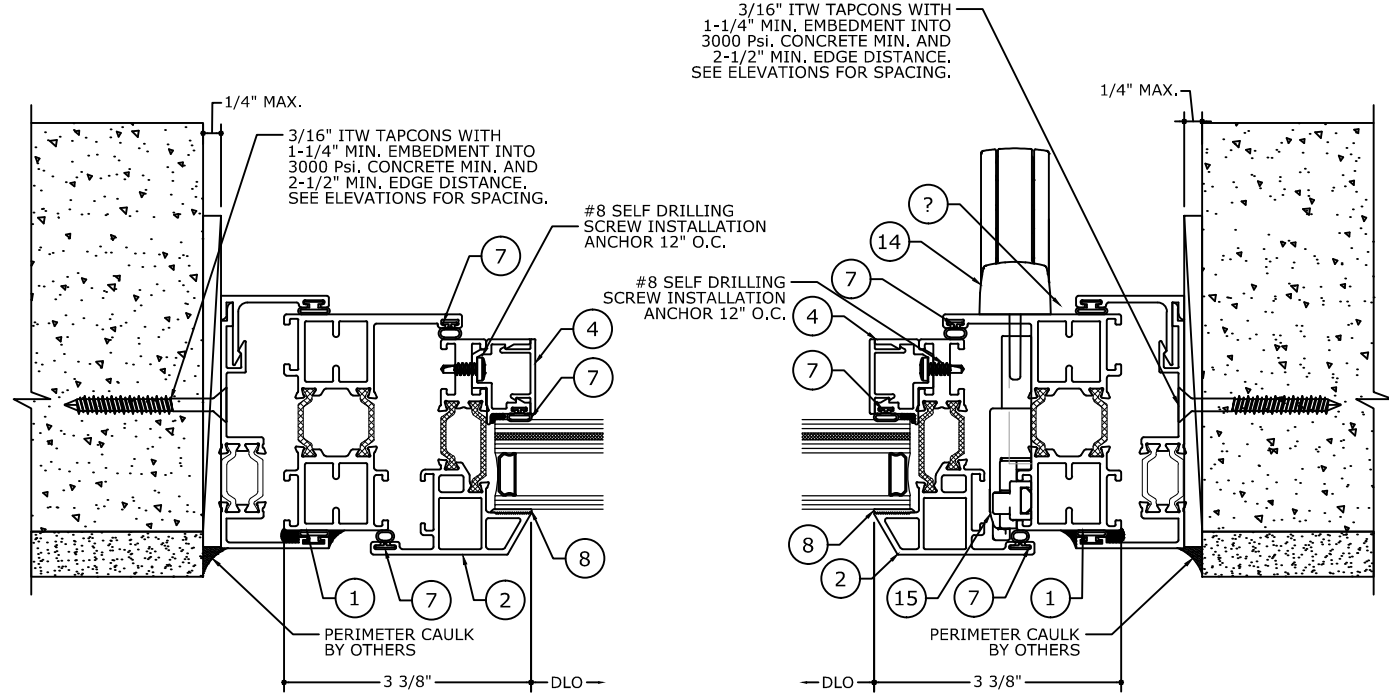
REMARKS	DRWN	CHKD	DATE
FBC 2020 UPDATE	TAE	AJP	04/01/21

COPYRIGHT ENGINEERING EXPRESS®

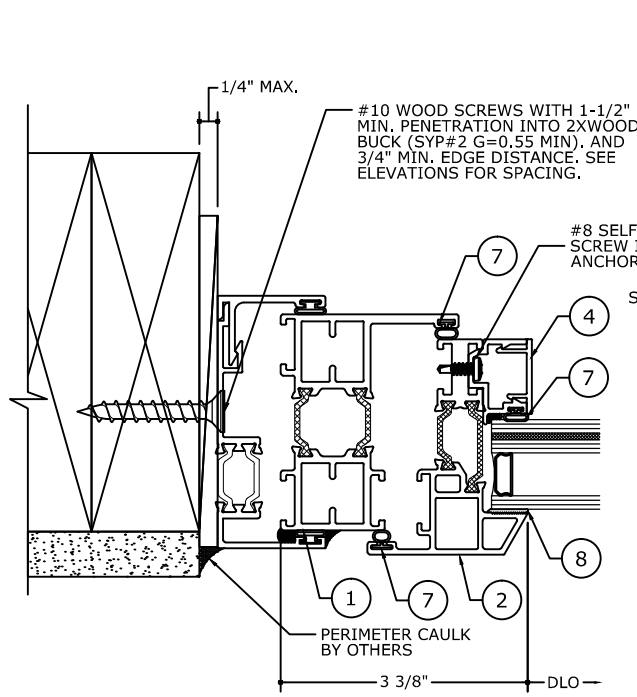
21-38794

SCALE: NTS UNLESS NOTED

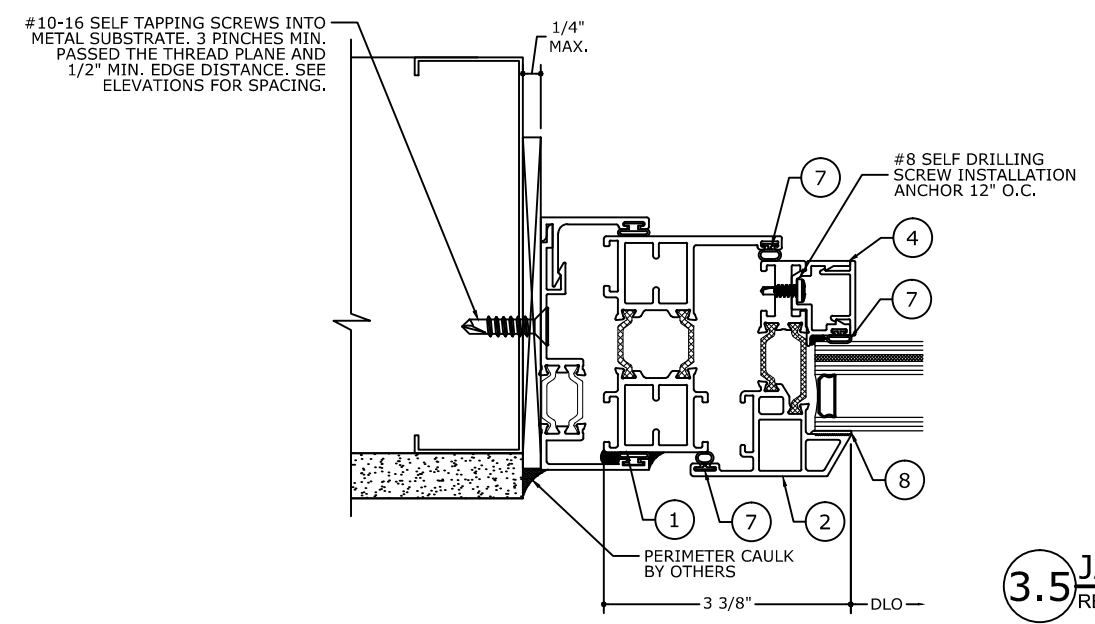
12 14



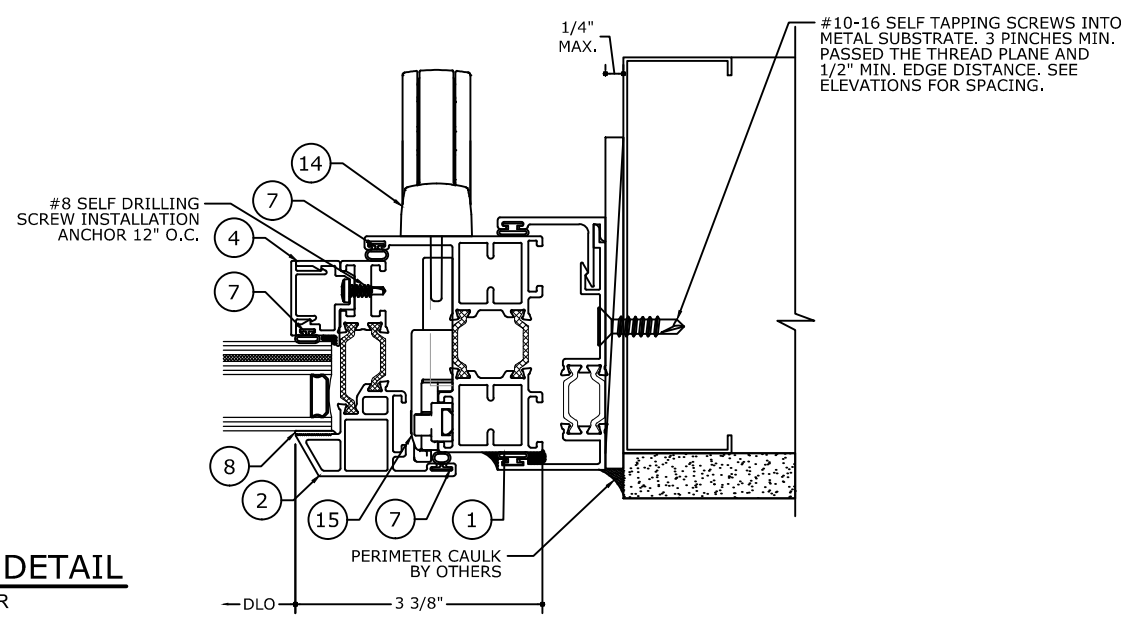
**3.3 JAMB DETAIL**  
RECEPTOR



**3.4 JAMB DETAIL**  
RECEPTOR



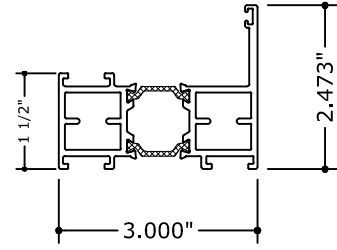
**3.5 JAMB DETAIL**  
RECEPTOR



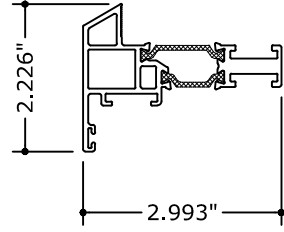
NOTE: REFER TO SYSTEM INSTALLATION MANUAL FOR FABRICATION AND ASSEMBLY INSTRUCTIONS.

C:\Users\thayer\OneDrive - Engineering Express\Desktop\21-38794 GT6700 Casement (2020 FSA).dwg thayer 04/19/2021 - 6:06pm

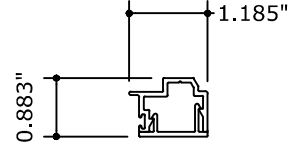
# SYSTEM COMPONENTS



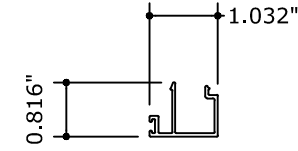
① OPERABLE FRAME  
6063-T5



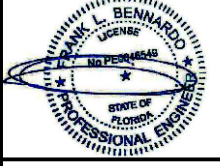
② VENT RAIL  
6063-T5



③ GLAZING BEAD SCREW APPLIED  
6063-T5



④ GLAZING BEAD  
6063-T5



FL# 38534.1



CORPORATE OFFICE:  
160 SW 12th AVE, SUITE 106  
DEERFIELD BEACH, FL 33442  
(954) 354-0660 | (866) 396-9999  
TEAM@ENGINEERINGEXPRESS.COM  
ENGINEERINGEXPRESS.COM

**GRAHAM ARCHITECTURAL PRODUCTS**  
1551 MT. ROSE AVENUE | YORK, PA 17403  
PH: (717) 849-8100

SERIES GT6700 CASEMENT  
FLORIDA STATEWIDE APPROVAL  
FLORIDA BUILDING CODE 7TH EDITION (2020)

REMARKS	DRWN	CHKD	DATE
FBC 2020 UPDATE	TAE	AJP	04/01/21
	-	-	-
	-	-	-
	-	-	-

COPYRIGHT ENGINEERING EXPRESS®

21-38794

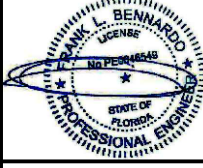
SCALE: NTS UNLESS NOTED



# BILL OF MATERIALS

ITEM NO.	DESCRIPTION	MATERIAL	MANUFACTURER
1	OPERABLE - FRAME	ALUM. 6063-T5	
2	VENT - RAIL	ALUM. 6063-T5	
3	FIXED FRAME ADAPTOR	ALUM. 6063-T6	
4	GLAZING BEAD SCREW APPLIED	ALUM. 6063-T6	
5	GLAZING BEAD	ALUM. 6063-T6	
6	ALUMINUM CLIP 1/8"	ALUM. 6063-T6	
7	BULB GASKET	5/16 TPE BULB	ULTRAFAB
8	GLAZING COMPOUND	SILICONE	DOWSIL 2400
9	GLAZING COMPOUND	SILICONE	DOWSIL 995
10	3 PIECE MULLION	ALUM. 6063-T5	
11	MULLION - PRESSURE PLATE	ALUM. 6063-T6	
12	CAM LOCK HANDLE	WHITE BRONZE	BRONZE CRAFT
13	CAM LOCK STRIKE	WHITE BRONZE	BRONZE CRAFT
14	SL OPERATOR HANDLE	ZAMAK	SAVIO
15	SL OPERATOR GEARBOX	STAINLESS	SAVIO
16	GLAZING BLOCK	-	-

FRANK BENNARDO, P.E.  
PE# 0046549 CA, 9885



04/19/2021

FL# 38534.1



CORPORATE OFFICE:  
160 SW 12th AVE, SUITE 106  
DEERFIELD BEACH, FL 33442  
(954) 354-0660 | (866) 396-9999  
TEAM@ENGINEERINGEXPRESS.COM  
ENGINEERINGEXPRESS.COM

**GRAHAM ARCHITECTURAL PRODUCTS**  
1551 MT. ROSE AVENUE | YORK, PA 17403  
PH: (717) 849-8100

SERIES GT6700 CASEMENT  
FLORIDA STATEWIDE APPROVAL  
FLORIDA BUILDING CODE 7TH EDITION (2020)

REMARKS	DRWN	CHKD	DATE
FBC 2020 UPDATE	TAE	AJP	04/01/21

COPYRIGHT ENGINEERING EXPRESS®

21-38794

SCALE: NTS UNLESS NOTED