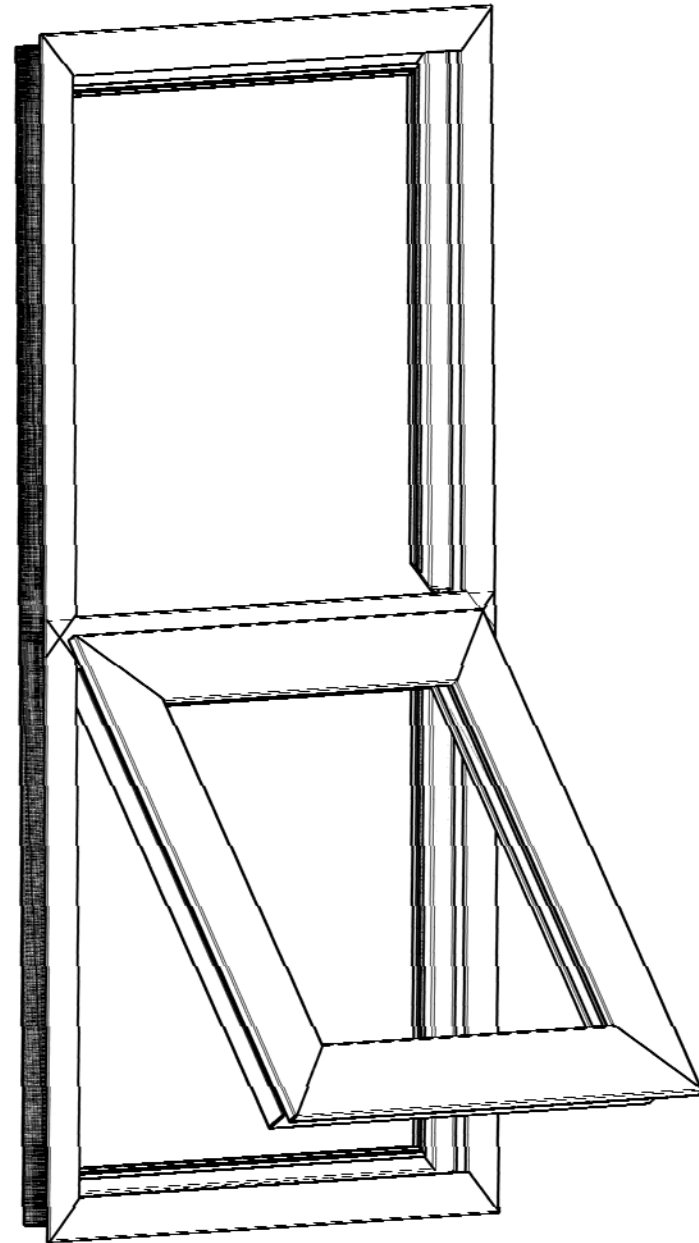


GRAHAM ARCHITECTURAL PRODUCTS, INC.

GT6700 FIXED/AWNING WINDOW (LARGE & SMALL MISSILE IMPACT RATED - NON-HVHZ)



GENERAL NOTES:

- THIS SYSTEM AND GLASS TYPES DESCRIBED HEREIN COMPLY AND HAVE BEEN DESIGNED AND TESTED IN ACCORDANCE WITH THE FLORIDA BUILDING CODE SEVENTH EDITION (2020) PER
 - ASTM E1996-17 / E1886-12
 - AAMA 506-16
- SITE-SPECIFIC REQUIRED DESIGN PRESSURES SHALL BE CALCULATED BY A LICENSED PROFESSIONAL ENGINEER FOR USE WITH THIS DOCUMENT PER CURRENT ADOPTED EDITION OF ASCE 7 AND WITH LOCAL CODE REQUIREMENTS.
- THIS SYSTEM IS IMPACT RATED FOR WIND ZONE IV, NON-HVHZ.
- DESIGN PRESSURES NOTED HEREIN ARE BASED ON MAXIMUM TESTED PRESSURES DIVIDED BY A 1.5 SAFETY FACTOR.
- NO 33-1/3% INCREASE IN ALLOWABLE STRESS HAS BEEN USED IN THE DESIGN OF THIS SYSTEM. WIND LOAD DURATION FACTOR $C_d=1.6$ HAS BEEN USED FOR WOOD ANCHOR DESIGN.
- THE ARCHITECT/ENGINEER OF RECORD FOR THE PROJECT SUPERSTRUCTURE WITH WHICH THIS DESIGN IS USED SHALL BE RESPONSIBLE FOR THE INTEGRITY OF ALL SUPPORTING SURFACES TO THIS DESIGN WHICH SHALL BE COORDINATED BY THE PERMITTING CONTRACTOR. WOOD BUCKS (BY OTHERS) SHALL BE ANCHORED PROPERLY TO TRANSFER LOADS TO THE EXISTING STRUCTURE.
- THE SYSTEM DETAILED HEREIN IS GENERIC AND DOES NOT PROVIDE INFORMATION FOR A SPECIFIC SITE. FOR SITE CONDITIONS DIFFERENT FROM THE CONDITIONS DETAILED HEREIN, A LICENSED ENGINEER OR REGISTERED ARCHITECT SHALL PREPARE SITE SPECIFIC DOCUMENTS FOR USE IN CONJUNCTION WITH THIS DOCUMENT.
- THE CONTRACTOR IS RESPONSIBLE TO INSULATE ALL MEMBERS FROM DISSIMILAR MATERIALS TO PREVENT ELECTROLYSIS.
- FASTENERS SHALL BE CADMIUM-PLATED OR OTHERWISE CORROSION-RESISTANT MATERIAL AND SHALL COMPLY WITH "SPECIFICATIONS FOR ALUMINUM STRUCTURES" SECTION J.3.7.2 BY THE ALUMINUM ASSOCIATION, INC., & ANY APPLICABLE FEDERAL, STATE, AND/OR LOCAL CODES
- ENGINEER SEAL AFFIXED HERE TO VALIDATES STRUCTURAL DESIGN AS SHOWN ONLY. USE OF THIS SPECIFICATION BY CONTRACTOR, et. al. INDEMNIFIES & SAVES HARMLESS THIS ENGINEER FOR ALL COST & DAMAGES INCLUDING LEGAL FEES & APPELLATE FEES RESULTING FROM MATERIAL FABRICATION, SYSTEM ERECTION, & CONSTRUCTION PRACTICES BEYOND THAT WHICH IS CALLED FOR BY LOCAL, STATE, & FEDERAL CODES & FROM DEVIATIONS OF THIS PLAN.
- EXCEPT AS EXPRESSLY PROVIDED HEREIN, NO ADDITIONAL CERTIFICATIONS OR AFFIRMATIONS ARE INTENDED.
- PRESSURE VALUES ON THIS APPROVAL ARE (ASD) ALLOWABLE DESIGN PRESSURES.
- ALTERATIONS, ADDITIONS, OR OTHER MARKINGS TO THIS DOCUMENT ARE NOT PERMITTED AND INVALIDATE THIS CERTIFICATION.
- SAFEGUARDS MUST BE OBSERVED (NOT IN THIS CERTIFICATION)
- PRODUCT SHALL BE PERMANENTLY LABELED WITH A MINIMUM OF ONE LABEL PER SYSTEM CONTAINING THE FOLLOWING:
 GRAHAM ARCHITECTURAL PRODUCTS, INC
 1551 MT. ROSE AVE.
 YORK, PA 17403

SHEET INDEX

# SHEET	DESCRIPTION
01	COVER SHEET
02	ELEVATIONS
03-04	GLAZING DETAILS & GLASS LOADING TABLES
05	FRAME LOADING TABLES
06-09	ANCHOR SCHEDULE & ANCHOR LOADING TABLES
10-14	DETAILS
15-16	EXTRUSIONS / PART LIST
16	TOTAL

VISIT [ECALC.IO/38776](https://ecalculator.com/38776)

FOR HELPFUL RESOURCES, SITE SPECIFIC JOB ORDERING & MORE INFORMATION ABOUT THIS PRODUCT & RELATED SERVICES

SCAN HERE:



FRANK BENNARDO, P.E.
PE# 0046549 CA, 9885



04/19/2021

FL# 38535.1



CORPORATE OFFICE:
160 SW 12th AVE, SUITE 106
DEERFIELD BEACH, FL 33442
(954) 354-0660 | (866) 396-9999
TEAM@ENGINEERINGEXPRESS.COM
ENGINEERINGEXPRESS.COM

GRAHAM ARCHITECTURAL PRODUCTS
1551 MT. ROSE AVENUE | YORK, PA 17403
PH: (717) 849-8100

SERIES GT6700 FIXED OVER AWNING
FLORIDA STATEWIDE APPROVAL
FLORIDA BUILDING CODE 7TH EDITION (2020)

REMARKS	DRWN	CHKD	DATE
FBC 2020 UPDATE	TAE	AJP	04/01/21

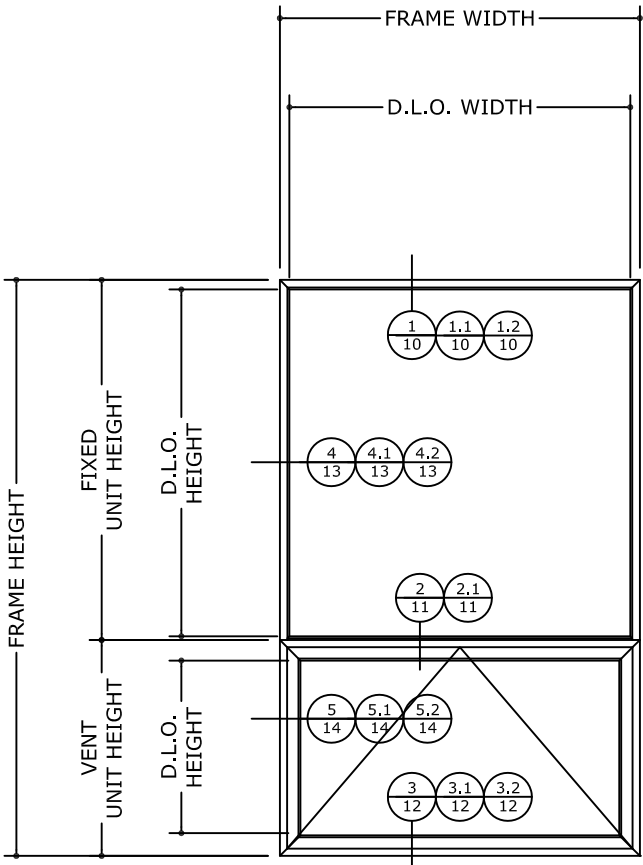
COPYRIGHT ENGINEERING EXPRESS®

21-38776

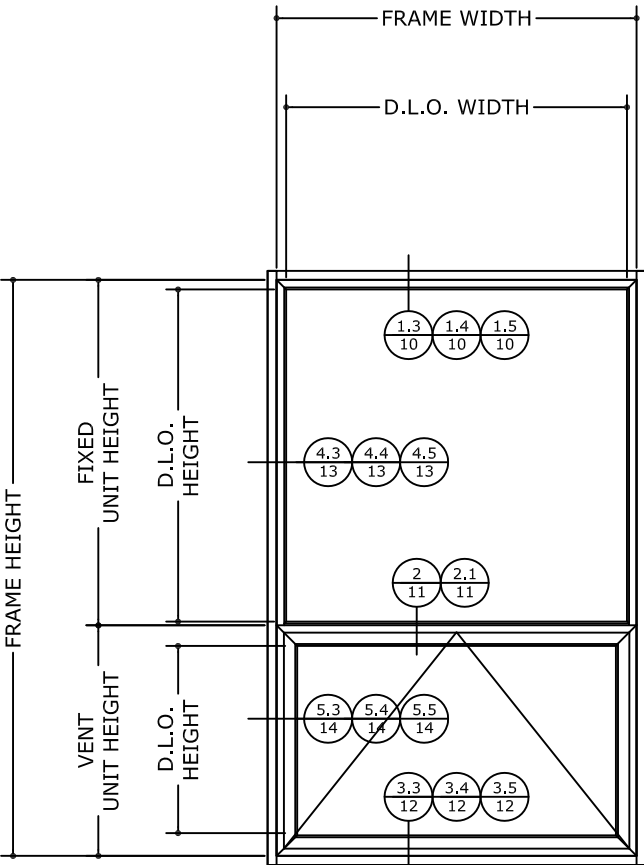
SCALE: NTS UNLESS NOTED

01

ELEVATIONS



TYPICAL FIXED OVER PROJECT OUT ELEVATION



TYPICAL FIXED OVER PROJECT OUT ELEVATION WITH RECEPTOR

INSTRUCTIONS TO DETERMINE DESIGN PRESSURE RATING

- STEP ①: USE THE GLASS LOADING TABLES TO DETERMINE THE ALLOWABLE PRESSURE OF THE GLASS.
- STEP ②: USE THE FRAME LOADING TABLE TO DETERMINE THE ALLOWABLE PRESSURES.
- STEP ③: THE MINIMUM VALUE BETWEEN STEP ① AND STEP ② WILL DETERMINE THE DESIGN LOAD PRESSURE FOR THE WINDOW SYSTEM.

MAX D.L.O. AREA FOR FIXED UNIT = 22.2 SQ. FT.
 MAX D.O.O. AREA FOR VENT UNIT = 11.13 SQ. FT.

MAXIMUM ALLOWABLE DESIGN PRESSURES:
 +70 PSF, -90 PSF

FRANK BENNARDO, P.E.
 PE# 0046549 CA, 9885



04/19/2021

FL# 38535.1

ENGINEERING EXPRESS
 CORPORATE OFFICE:
 160 SW 12th AVE, SUITE 106
 DEERFIELD BEACH, FL 33442
 (954) 354-0660 | (866) 396-9999
 TEAM@ENGINEERINGEXPRESS.COM
 ENGINEERINGEXPRESS.COM

GRAHAM ARCHITECTURAL PRODUCTS
 1551 MT. ROSE AVENUE | YORK, PA 17403
 PH: (717) 849-8100

SERIES GT6700 FIXED OVER AWNING
 FLORIDA STATEWIDE APPROVAL
 FLORIDA BUILDING CODE 7TH EDITION (2020)

REMARKS	DRWN	CHKD	DATE
FBC 2020 UPDATE	TAE	AJP	04/01/21

21-38776

SCALE: NTS UNLESS NOTED

GLASS TYPES

NOTE: GLASS SIZE = DLO + 1"

FRANK BENNARDO, P.E.
PE# 0046549 CA, 9885



04/19/2021

FL# 38535.1

ENGINEERING EXPRESS
CORPORATE OFFICE:
160 SW 12th AVE, SUITE 106
DEERFIELD BEACH, FL 33442
(954) 354-0660 | (866) 396-9999
TEAM@ENGINEERINGEXPRESS.COM
ENGINEERINGEXPRESS.COM

GRAHAM ARCHITECTURAL PRODUCTS
1551 MT. ROSE AVENUE | YORK, PA 17403
PH: (717) 849-8100

SERIES GT6700 FIXED OVER AWNING
FLORIDA STATEWIDE APPROVAL
FLORIDA BUILDING CODE 7TH EDITION (2020)

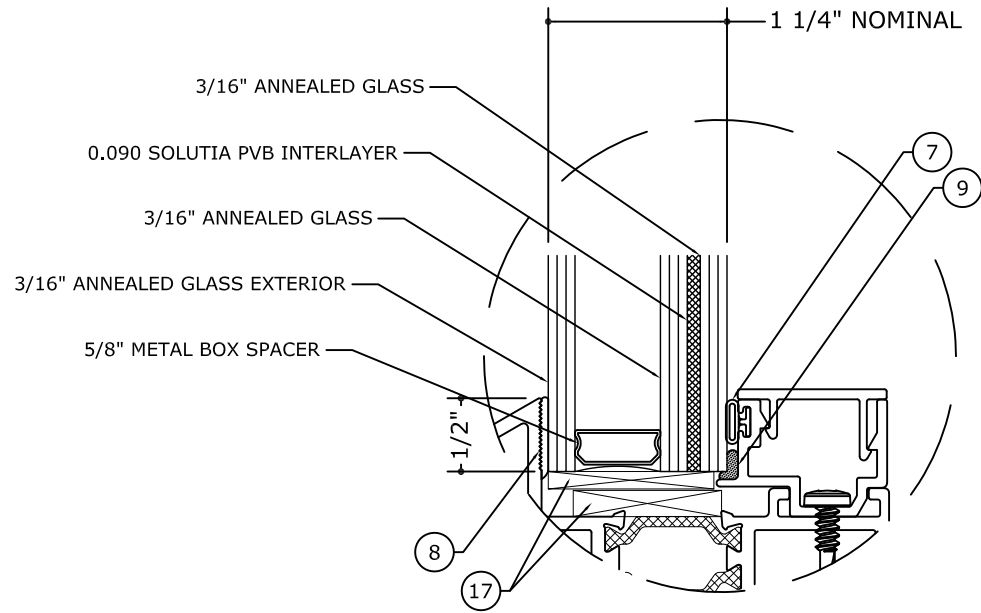
REMARKS	DRWN	CHKD	DATE
FBC 2020 UPDATE	TAE	AJP	04/01/21

COPYRIGHT ENGINEERING EXPRESS®

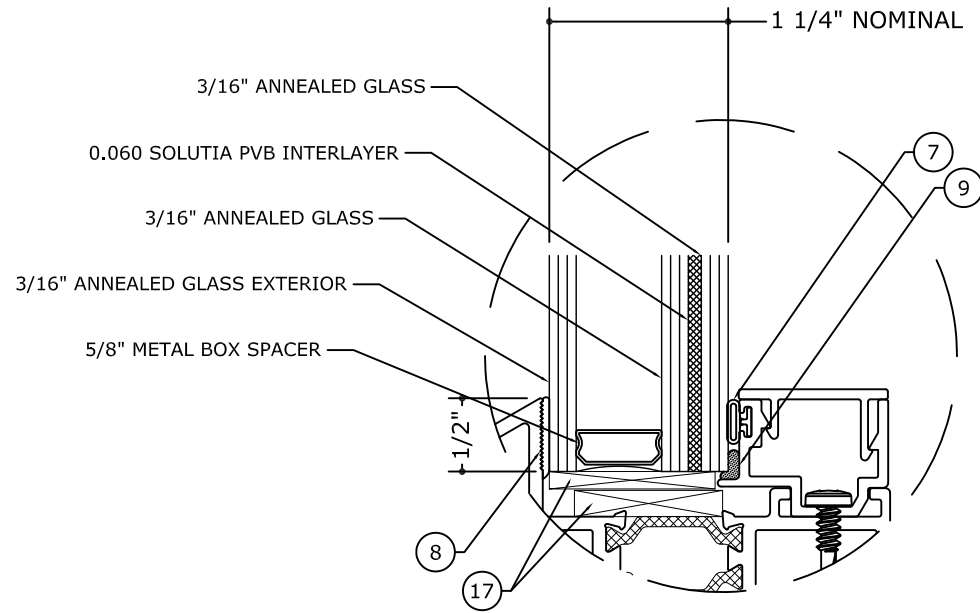
21-38776

SCALE: NTS UNLESS NOTED

03 16



GLASS TYPE **G1**
GLAZING DETAIL
N.T.S.
GLASS RATING:
LARGE MISSILE IMPACT
MISSILE LEVEL D





GLASS TYPE **G2**
GLAZING DETAIL
N.T.S.
GLASS RATING:
SMALL MISSILE IMPACT
MISSILE LEVEL A

NOTE:
GLAZING TYPE COMPLIES WITH
ASTM E1300 REQUIREMENTS .

C:\Users\joem\appdata\local\temp\AcPublish_7248\21-38776b GT6700 Fixed_Awning (2020 FSA).dwg joem 04/19/2021 - 5:42pm

GLASS LOADING TABLES

GLASS TYPES			
		ALLOWABLE PRESSURE	
D.L.O. HEIGHT (in)	D.L.O. WIDTH (in)	(+) P.S.F.	(-) P.S.F.
24	24	70	90
	31	70	90
	36	70	90
	42	70	90
	48	70	90
	54	70	90
	56-5/8	70	90
	64	70	90
	70	70	90
31	24	70	90
	31	70	90
	36	70	90
	42	70	90
	48	70	90
	54	70	90
	56-5/8	70	90
	64	70	90
	70	70	90
36	24	70	90
	31	70	90
	36	70	90
	42	70	90
	48	70	90
	54	70	90
	56-5/8	70	90
	64	70	90
	70	70	90

GLASS TYPES			
		ALLOWABLE PRESSURE	
D.L.O. HEIGHT (in)	D.L.O. WIDTH (in)	(+) P.S.F.	(-) P.S.F.
42	24	70	90
	31	70	90
	36	70	90
	42	70	90
	48	70	90
	54	70	90
	56-5/8	70	90
	64	70	90
	70	70	90
48	24	70	90
	31	70	90
	36	70	90
	42	70	90
	48	70	90
	54	70	90
	56-5/8	70	90
	64	70	90
	70	70	90
57	24	70	90
	31	70	90
	36	70	90
	42	70	90
	48	70	90
	54	70	90
56-5/8	70	90	

NOTE: D.L.O. WIDTH AND HEIGHT DIMENSIONS CAN BE REVERSED.

FRANK BENNARDO, P.E.
PE# 0046549 CA, 9885



04/19/2021

FL# 38535.1



ENGINEERING EXPRESS®
CORPORATE OFFICE:
160 SW 12th AVE, SUITE 106
DEERFIELD BEACH, FL 33442
(954) 354-0660 | (866) 396-9999
TEAM@ENGINEERINGEXPRESS.COM
ENGINEERINGEXPRESS.COM

GRAHAM ARCHITECTURAL PRODUCTS
1551 MT. ROSE AVENUE | YORK, PA 17403
PH: (717) 849-8100

SERIES GT6700 FIXED OVER AWNING
FLORIDA STATEWIDE APPROVAL
FLORIDA BUILDING CODE 7TH EDITION (2020)

REMARKS	DRWN	CHKD	DATE
FBC 2020 UPDATE	TAE	AJP	04/01/21

COPYRIGHT ENGINEERING EXPRESS®

21-38776

SCALE: NTS UNLESS NOTED

04

16

FRAME LOADING TABLES

FRANK BENNARDO, P.E.
PE# 0046549 CA, 9885



04/19/2021

FL# 38535.1

ENGINEERING EXPRESS
CORPORATE OFFICE:
160 SW 12th AVE, SUITE 106
DEERFIELD BEACH, FL 33442
(954) 354-0660 | (866) 396-9999
TEAM@ENGINEERINGEXPRESS.COM
ENGINEERINGEXPRESS.COM

GRAHAM ARCHITECTURAL PRODUCTS
1551 MT. ROSE AVENUE | YORK, PA 17403
PH: (717) 849-8100
SERIES GT6700 FIXED OVER AWNING
FLORIDA STATEWIDE APPROVAL
FLORIDA BUILDING CODE 7TH EDITION (2020)

REMARKS	DRWN	CHKD	DATE
FBC 2020 UPDATE	TAE	AJP	04/01/21

COPYRIGHT ENGINEERING EXPRESS®

21-38776

SCALE: NTS UNLESS NOTED

05

16

FIXED OVER AWNING ALLOWABLE PRESSURES			
FRAME WIDTH (in)	FRAME HEIGHT (in)	(+) P.S.F.	(-) P.S.F.
36	24	70	90
	30	70	90
	36	70	90
	42	70	90
	48	70	90
	54	70	90
	60	70	90
	66	70	90
	72	70	90
	78	70	90
42	24	70	90
	30	70	90
	36	70	90
	42	70	90
	48	70	90
	54	70	90
	60	70	90
	66	70	90
	72	70	90
	78	70	90
48	24	70	90
	30	70	90
	36	70	90
	42	70	90
	48	70	90
	54	70	90
	60	70	90
	66	70	90
	72	70	90
	78	70	90

FIXED OVER AWNING ALLOWABLE PRESSURES			
FRAME WIDTH (in)	FRAME HEIGHT (in)	(+) P.S.F.	(-) P.S.F.
54	24	70	90
	30	70	90
	36	70	90
	42	70	90
	48	70	90
	54	70	90
	60	70	90
	66	70	90
	72	70	90
	78	70	90
60	24	70	90
	30	70	90
	36	70	90
	42	70	90
	48	70	90
	54	70	90
	60	70	90
	66	70	90
	72	70	90
	78	70	90
66	24	70	90
	30	70	90
	36	70	90
	42	70	90
	48	70	90
	54	70	90
	60	70	90
	66	63	81
	72	63	81
	78	63	81

FIXED OVER AWNING ALLOWABLE PRESSURES			
FRAME WIDTH (in)	FRAME HEIGHT (in)	(+) P.S.F.	(-) P.S.F.
72	24	70	90
	30	70	90
	36	70	90
	42	70	90
	48	70	90
	54	70	90
	60	70	90
	66	63	81
	72	58	75
	78	58	75
78	24	70	90
	30	70	90
	36	70	90
	42	70	90
	48	70	90
	54	70	90
	60	70	90
	66	63	81
	72	58	75
	78	58	75
84	24	70	90
	30	70	90
	36	70	90
	42	70	90
	48	70	90
	54	70	90
	60	70	90
66	63	81	

FIXED OVER AWNING ALLOWABLE PRESSURES			
FRAME WIDTH (in)	FRAME HEIGHT (in)	(+) P.S.F.	(-) P.S.F.
90	24	70	90
	30	70	90
	36	70	90
	42	70	90
	48	70	90
	54	70	90
	60	70	90
96	24	70	90
	30	70	90
	36	70	90
	42	70	90
	48	70	90
	60	70	90

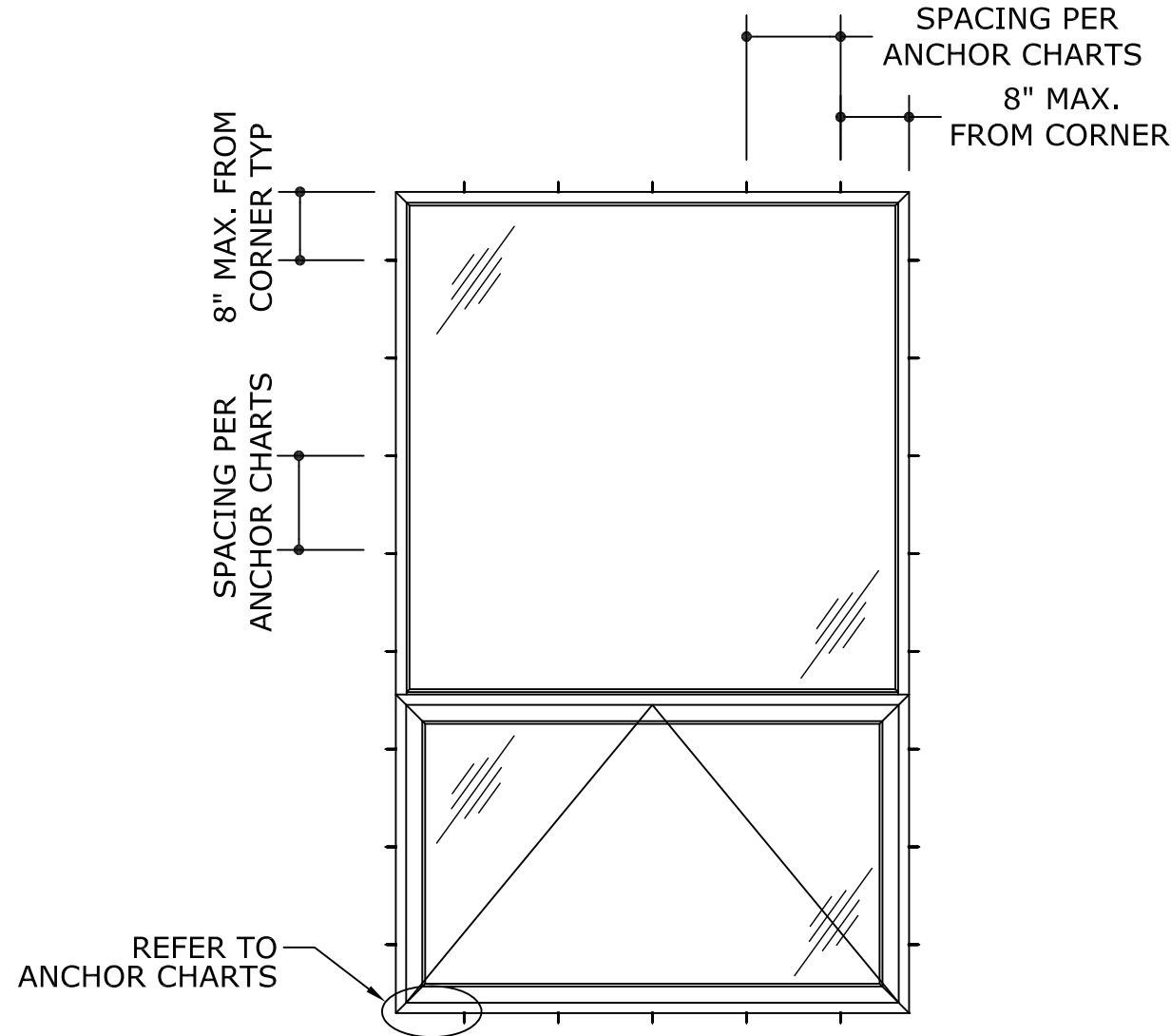
C:\Users\joem\appdata\local\temp\AcPublish_7248\21-38776b GT6700 Fixed_Awning (2020 FSA).dwg joem 04/19/2021 - 5:42pm

C:\Users\joem\appdata\local\temp\AcPublish_7248121-38776b GT6700 Fixed_Awning (2020 FSA).dwg

joem

04/19/2021 - 5:42pm

FASTENER SCHEDULE



ANCHOR SCHEDULE					
ANCHOR TYPE	ANCHOR DIAMETER	TYPE	SUBSTRATE	MIN. EMBEDMENT (IN)	MIN. EDGE DISTANCE (IN)
A	3/16"	TAPCON	POURED CONCRETE 3000 PSI MIN	1-1/4	2-1/2
B	#10-16	SELF DRILLING SCREW	16 GA. MIN. STUD ASTM A-653 GRADE 33 STEEL	3 PINCHES PASSED THREAD PLANE	1/2
			1/8" STEEL-A36 1/8" ALUMINUM-6063-T6		
C	#10	WOOD SCREW	2X WOOD BUCK (SYP#2 MIN.) G=0.55	1-1/2	3/4

FRANK BENNARDO, P.E.
PE# 0046549 CA, 9885



04/19/2021

FL# 38535.1

ENGINEERING EXPRESS
CORPORATE OFFICE:
160 SW 12th AVE, SUITE 106
DEERFIELD BEACH, FL 33442
(954) 354-0660 | (866) 396-9999
TEAM@ENGINEERINGEXPRESS.COM
ENGINEERINGEXPRESS.COM

GRAHAM ARCHITECTURAL PRODUCTS
1551 MT. ROSE AVENUE | YORK, PA 17403
PH: (717) 849-8100
SERIES GT6700 FIXED OVER AWNING
FLORIDA STATEWIDE APPROVAL
FLORIDA BUILDING CODE 7TH EDITION (2020)

REMARKS	DRWN	CHKD	DATE
FBC 2020 UPDATE	TAE	AJP	04/01/21

COPYRIGHT ENGINEERING EXPRESS®

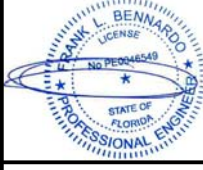
21-38776

SCALE: NTS UNLESS NOTED

06 16

ANCHOR CHARTS

FRANK BENNARDO, P.E.
PE# 0046549 CA, 9885



04/19/2021

FL# 38535.1

ENGINEERING EXPRESS
CORPORATE OFFICE:
160 SW 12th AVE, SUITE 106
DEERFIELD BEACH, FL 33442
(954) 354-0660 | (866) 396-9999
TEAM@ENGINEERINGEXPRESS.COM
ENGINEERINGEXPRESS.COM

GRAHAM ARCHITECTURAL PRODUCTS
1551 MT. ROSE AVENUE | YORK, PA 17403
PH: (717) 849-8100
SERIES GT6700 FIXED OVER AWNING
FLORIDA STATEWIDE APPROVAL
FLORIDA BUILDING CODE 7TH EDITION (2020)

REMARKS	DATE
FBC 2020 UPDATE	04/01/21
DRWN CHKD	TAE
AJP	

COPYRIGHT ENGINEERING EXPRESS®

21-38776

SCALE: NTS UNLESS NOTED

07

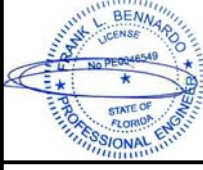
FRAME HEIGHT (IN)	FRAME WIDTH (IN)	TYPE A (CONCRETE) DESIGN PRESSURE = 90 PSF		TYPE B (METAL) DESIGN PRESSURE = 90 PSF		TYPE C (WOOD) DESIGN PRESSURE = 90 PSF	
		HEAD/SILL MAX ANCHOR SPACING (IN)	JAMBS MAX ANCHOR SPACING (IN)	HEAD/SILL MAX ANCHOR SPACING (IN)	JAMBS MAX ANCHOR SPACING (IN)	HEAD/SILL MAX ANCHOR SPACING (IN)	JAMBS MAX ANCHOR SPACING (IN)
24	24	24 O.C.	29 O.C.	25 O.C.	30 O.C.	22 O.C.	27 O.C.
	30	24 O.C.	24 O.C.	25 O.C.	25 O.C.	22 O.C.	22 O.C.
	36	24 O.C.	21 O.C.	25 O.C.	22 O.C.	22 O.C.	19 O.C.
	42	24 O.C.	19 O.C.	25 O.C.	20 O.C.	22 O.C.	17 O.C.
	48	24 O.C.	18 O.C.	25 O.C.	18 O.C.	22 O.C.	16 O.C.
	54	24 O.C.	17 O.C.	25 O.C.	17 O.C.	22 O.C.	15 O.C.
	60	24 O.C.	16 O.C.	25 O.C.	16 O.C.	22 O.C.	14 O.C.
	63	24 O.C.	16 O.C.	25 O.C.	16 O.C.	22 O.C.	14 O.C.
	66	24 O.C.	16 O.C.	25 O.C.	16 O.C.	22 O.C.	14 O.C.
	78	24 O.C.	15 O.C.	25 O.C.	16 O.C.	22 O.C.	13 O.C.
30	24	19 O.C.	29 O.C.	20 O.C.	30 O.C.	17 O.C.	27 O.C.
	30	19 O.C.	24 O.C.	20 O.C.	25 O.C.	17 O.C.	22 O.C.
	36	19 O.C.	21 O.C.	20 O.C.	22 O.C.	17 O.C.	19 O.C.
	42	19 O.C.	19 O.C.	20 O.C.	20 O.C.	17 O.C.	17 O.C.
	48	19 O.C.	18 O.C.	20 O.C.	18 O.C.	17 O.C.	16 O.C.
	54	19 O.C.	17 O.C.	20 O.C.	17 O.C.	17 O.C.	15 O.C.
	60	19 O.C.	16 O.C.	20 O.C.	16 O.C.	17 O.C.	14 O.C.
	63	19 O.C.	16 O.C.	20 O.C.	16 O.C.	17 O.C.	14 O.C.
	66	19 O.C.	16 O.C.	20 O.C.	16 O.C.	17 O.C.	14 O.C.
	78	19 O.C.	15 O.C.	20 O.C.	16 O.C.	17 O.C.	13 O.C.
36	24	16 O.C.	29 O.C.	17 O.C.	30 O.C.	14 O.C.	27 O.C.
	30	16 O.C.	24 O.C.	17 O.C.	25 O.C.	14 O.C.	22 O.C.
	36	16 O.C.	21 O.C.	17 O.C.	22 O.C.	14 O.C.	19 O.C.
	42	16 O.C.	19 O.C.	17 O.C.	20 O.C.	14 O.C.	17 O.C.
	48	16 O.C.	18 O.C.	17 O.C.	18 O.C.	14 O.C.	16 O.C.
	54	16 O.C.	17 O.C.	17 O.C.	17 O.C.	14 O.C.	15 O.C.
	60	16 O.C.	16 O.C.	17 O.C.	16 O.C.	14 O.C.	14 O.C.
	63	16 O.C.	16 O.C.	17 O.C.	16 O.C.	14 O.C.	14 O.C.
	66	16 O.C.	16 O.C.	17 O.C.	16 O.C.	14 O.C.	14 O.C.
	78	16 O.C.	15 O.C.	17 O.C.	16 O.C.	14 O.C.	13 O.C.

FRAME HEIGHT (IN)	FRAME WIDTH (IN)	TYPE A (CONCRETE) DESIGN PRESSURE = 90 PSF		TYPE B (METAL) DESIGN PRESSURE = 90 PSF		TYPE C (WOOD) DESIGN PRESSURE = 90 PSF	
		HEAD/SILL MAX ANCHOR SPACING (IN)	JAMBS MAX ANCHOR SPACING (IN)	HEAD/SILL MAX ANCHOR SPACING (IN)	JAMBS MAX ANCHOR SPACING (IN)	HEAD/SILL MAX ANCHOR SPACING (IN)	JAMBS MAX ANCHOR SPACING (IN)
42	24	14 O.C.	29 O.C.	14 O.C.	30 O.C.	12 O.C.	27 O.C.
	30	14 O.C.	24 O.C.	14 O.C.	25 O.C.	12 O.C.	22 O.C.
	36	14 O.C.	21 O.C.	14 O.C.	22 O.C.	12 O.C.	19 O.C.
	42	14 O.C.	19 O.C.	14 O.C.	20 O.C.	12 O.C.	17 O.C.
	48	14 O.C.	18 O.C.	14 O.C.	18 O.C.	12 O.C.	16 O.C.
	54	14 O.C.	17 O.C.	14 O.C.	17 O.C.	12 O.C.	15 O.C.
	60	14 O.C.	16 O.C.	14 O.C.	16 O.C.	12 O.C.	14 O.C.
	63	14 O.C.	16 O.C.	14 O.C.	16 O.C.	12 O.C.	14 O.C.
	66	14 O.C.	16 O.C.	14 O.C.	16 O.C.	12 O.C.	14 O.C.
	78	14 O.C.	15 O.C.	14 O.C.	16 O.C.	12 O.C.	13 O.C.
48	24	14 O.C.	29 O.C.	13 O.C.	30 O.C.	12 O.C.	27 O.C.
	30	14 O.C.	24 O.C.	13 O.C.	25 O.C.	12 O.C.	22 O.C.
	36	12 O.C.	21 O.C.	13 O.C.	22 O.C.	10 O.C.	19 O.C.
	42	12 O.C.	19 O.C.	13 O.C.	20 O.C.	10 O.C.	17 O.C.
	48	12 O.C.	18 O.C.	13 O.C.	18 O.C.	10 O.C.	16 O.C.
	54	12 O.C.	17 O.C.	13 O.C.	17 O.C.	10 O.C.	15 O.C.
	60	12 O.C.	16 O.C.	13 O.C.	16 O.C.	10 O.C.	14 O.C.
	63	12 O.C.	16 O.C.	13 O.C.	16 O.C.	10 O.C.	14 O.C.
	66	12 O.C.	16 O.C.	13 O.C.	16 O.C.	10 O.C.	14 O.C.
	78	12 O.C.	15 O.C.	13 O.C.	16 O.C.	10 O.C.	13 O.C.
54	24	14 O.C.	29 O.C.	16 O.C.	30 O.C.	12 O.C.	27 O.C.
	30	14 O.C.	24 O.C.	16 O.C.	25 O.C.	12 O.C.	22 O.C.
	36	12 O.C.	21 O.C.	13 O.C.	22 O.C.	10 O.C.	19 O.C.
	42	12 O.C.	19 O.C.	13 O.C.	20 O.C.	10 O.C.	17 O.C.
	48	12 O.C.	18 O.C.	13 O.C.	18 O.C.	10 O.C.	16 O.C.
	54	12 O.C.	17 O.C.	13 O.C.	17 O.C.	10 O.C.	15 O.C.
	60	12 O.C.	16 O.C.	13 O.C.	16 O.C.	10 O.C.	14 O.C.
	63	12 O.C.	16 O.C.	13 O.C.	16 O.C.	10 O.C.	14 O.C.
	66	12 O.C.	16 O.C.	13 O.C.	16 O.C.	10 O.C.	14 O.C.
	78	12 O.C.	15 O.C.	13 O.C.	16 O.C.	10 O.C.	13 O.C.

C:\Users\joem\appdata\local\temp\AcPublish_7248\21-38776b GT6700 Fixed_Awning (2020 FSA).dwg joem 04/19/2021 - 5:42pm

ANCHOR CHARTS

FRANK BENNARDO, P.E.
PE# 0046549 CA, 9885



04/19/2021

FL# 38535.1

ENGINEERING EXPRESS
CORPORATE OFFICE:
160 SW 12th AVE, SUITE 106
DEERFIELD BEACH, FL 33442
(954) 354-0660 | (866) 396-9999
TEAM@ENGINEERINGEXPRESS.COM
ENGINEERINGEXPRESS.COM

GRAHAM ARCHITECTURAL PRODUCTS
1551 MT. ROSE AVENUE | YORK, PA 17403
PH: (717) 849-8100
SERIES GT6700 FIXED OVER AWNING
FLORIDA STATEWIDE APPROVAL
FLORIDA BUILDING CODE 7TH EDITION (2020)

REMARKS	DRWN	CHKD	DATE
FBC 2020 UPDATE	TAE	AJP	04/01/21

COPYRIGHT ENGINEERING EXPRESS®

21-38776

SCALE: NTS UNLESS NOTED

08

16

FRAME HEIGHT (IN)	FRAME WIDTH (IN)	TYPE A (CONCRETE) DESIGN PRESSURE = 90 PSF		TYPE B (METAL) DESIGN PRESSURE = 90 PSF		TYPE C (WOOD) DESIGN PRESSURE = 90 PSF	
		HEAD/SILL MAX ANCHOR SPACING (IN)	JAMBS MAX ANCHOR SPACING (IN)	HEAD/SILL MAX ANCHOR SPACING (IN)	JAMBS MAX ANCHOR SPACING (IN)	HEAD/SILL MAX ANCHOR SPACING (IN)	JAMBS MAX ANCHOR SPACING (IN)
60	24	14 O.C.	29 O.C.	16 O.C.	30 O.C.	12 O.C.	27 O.C.
	30	14 O.C.	24 O.C.	16 O.C.	25 O.C.	12 O.C.	22 O.C.
	36	12 O.C.	21 O.C.	13 O.C.	22 O.C.	10 O.C.	19 O.C.
	42	12 O.C.	19 O.C.	13 O.C.	20 O.C.	10 O.C.	17 O.C.
	48	12 O.C.	18 O.C.	13 O.C.	18 O.C.	10 O.C.	16 O.C.
	54	12 O.C.	17 O.C.	13 O.C.	17 O.C.	10 O.C.	15 O.C.
	60	12 O.C.	16 O.C.	13 O.C.	16 O.C.	10 O.C.	14 O.C.
	63	12 O.C.	16 O.C.	13 O.C.	16 O.C.	10 O.C.	14 O.C.
	66	12 O.C.	16 O.C.	13 O.C.	16 O.C.	10 O.C.	14 O.C.
	78	12 O.C.	15 O.C.	13 O.C.	16 O.C.	10 O.C.	13 O.C.
63	24	14 O.C.	29 O.C.	16 O.C.	30 O.C.	12 O.C.	27 O.C.
	30	14 O.C.	24 O.C.	16 O.C.	25 O.C.	12 O.C.	22 O.C.
	36	12 O.C.	21 O.C.	13 O.C.	22 O.C.	10 O.C.	19 O.C.
	42	12 O.C.	19 O.C.	13 O.C.	20 O.C.	10 O.C.	17 O.C.
	48	12 O.C.	18 O.C.	13 O.C.	18 O.C.	10 O.C.	16 O.C.
	54	12 O.C.	17 O.C.	13 O.C.	17 O.C.	10 O.C.	15 O.C.
	60	12 O.C.	16 O.C.	13 O.C.	16 O.C.	10 O.C.	14 O.C.
	63	12 O.C.	16 O.C.	13 O.C.	16 O.C.	10 O.C.	14 O.C.
	66	12 O.C.	16 O.C.	13 O.C.	16 O.C.	10 O.C.	14 O.C.
	78	12 O.C.	15 O.C.	13 O.C.	16 O.C.	10 O.C.	13 O.C.
66	24	14 O.C.	29 O.C.	16 O.C.	30 O.C.	12 O.C.	27 O.C.
	30	14 O.C.	24 O.C.	16 O.C.	25 O.C.	12 O.C.	22 O.C.
	36	12 O.C.	21 O.C.	13 O.C.	22 O.C.	10 O.C.	19 O.C.
	42	12 O.C.	19 O.C.	13 O.C.	20 O.C.	10 O.C.	17 O.C.
	48	12 O.C.	18 O.C.	13 O.C.	18 O.C.	10 O.C.	16 O.C.
	54	12 O.C.	17 O.C.	13 O.C.	17 O.C.	10 O.C.	15 O.C.
	60	12 O.C.	16 O.C.	13 O.C.	16 O.C.	10 O.C.	14 O.C.
	63	12 O.C.	16 O.C.	13 O.C.	16 O.C.	10 O.C.	14 O.C.
	66	12 O.C.	16 O.C.	13 O.C.	16 O.C.	10 O.C.	14 O.C.
	78	12 O.C.	15 O.C.	13 O.C.	16 O.C.	10 O.C.	13 O.C.

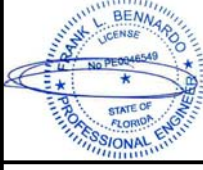
FRAME HEIGHT (IN)	FRAME WIDTH (IN)	TYPE A (CONCRETE) DESIGN PRESSURE = 90 PSF		TYPE B (METAL) DESIGN PRESSURE = 90 PSF		TYPE C (WOOD) DESIGN PRESSURE = 90 PSF	
		HEAD/SILL MAX ANCHOR SPACING (IN)	JAMBS MAX ANCHOR SPACING (IN)	HEAD/SILL MAX ANCHOR SPACING (IN)	JAMBS MAX ANCHOR SPACING (IN)	HEAD/SILL MAX ANCHOR SPACING (IN)	JAMBS MAX ANCHOR SPACING (IN)
72	24	14 O.C.	29 O.C.	16 O.C.	30 O.C.	12 O.C.	27 O.C.
	30	14 O.C.	24 O.C.	16 O.C.	25 O.C.	12 O.C.	22 O.C.
	36	12 O.C.	21 O.C.	13 O.C.	22 O.C.	10 O.C.	19 O.C.
	42	12 O.C.	19 O.C.	13 O.C.	20 O.C.	10 O.C.	17 O.C.
	48	12 O.C.	18 O.C.	13 O.C.	18 O.C.	10 O.C.	16 O.C.
	54	12 O.C.	17 O.C.	13 O.C.	17 O.C.	10 O.C.	15 O.C.
	60	12 O.C.	16 O.C.	13 O.C.	16 O.C.	10 O.C.	14 O.C.
	63	12 O.C.	16 O.C.	13 O.C.	16 O.C.	10 O.C.	14 O.C.
	66	12 O.C.	16 O.C.	13 O.C.	16 O.C.	10 O.C.	14 O.C.
	78	12 O.C.	15 O.C.	13 O.C.	16 O.C.	10 O.C.	13 O.C.
75	24	14 O.C.	29 O.C.	16 O.C.	30 O.C.	12 O.C.	27 O.C.
	30	14 O.C.	24 O.C.	16 O.C.	25 O.C.	12 O.C.	22 O.C.
	36	12 O.C.	21 O.C.	13 O.C.	22 O.C.	10 O.C.	19 O.C.
	42	12 O.C.	19 O.C.	13 O.C.	20 O.C.	10 O.C.	17 O.C.
	48	12 O.C.	18 O.C.	13 O.C.	18 O.C.	10 O.C.	16 O.C.
	54	12 O.C.	17 O.C.	13 O.C.	17 O.C.	10 O.C.	15 O.C.
	60	12 O.C.	16 O.C.	13 O.C.	16 O.C.	10 O.C.	14 O.C.
	63	12 O.C.	16 O.C.	13 O.C.	16 O.C.	10 O.C.	14 O.C.
	66	12 O.C.	16 O.C.	13 O.C.	16 O.C.	10 O.C.	14 O.C.
	78	12 O.C.	15 O.C.	13 O.C.	16 O.C.	10 O.C.	13 O.C.
78	24	14 O.C.	28 O.C.	16 O.C.	30 O.C.	12 O.C.	26 O.C.
	30	14 O.C.	24 O.C.	16 O.C.	25 O.C.	12 O.C.	22 O.C.
	36	12 O.C.	21 O.C.	13 O.C.	22 O.C.	10 O.C.	19 O.C.
	42	12 O.C.	19 O.C.	13 O.C.	20 O.C.	10 O.C.	17 O.C.
	48	12 O.C.	17 O.C.	13 O.C.	18 O.C.	10 O.C.	15 O.C.
	54	12 O.C.	16 O.C.	13 O.C.	17 O.C.	10 O.C.	14 O.C.
	60	12 O.C.	16 O.C.	13 O.C.	16 O.C.	10 O.C.	14 O.C.
	63	12 O.C.	15 O.C.	13 O.C.	16 O.C.	10 O.C.	13 O.C.
	66	12 O.C.	15 O.C.	13 O.C.	16 O.C.	10 O.C.	13 O.C.
	78	12 O.C.	15 O.C.	13 O.C.	16 O.C.	10 O.C.	13 O.C.

C:\Users\joem\appdata\local\temp\AcPublish_7248\21-38776b GT6700 Fixed_Awning (2020 FSA).dwg joem 04/19/2021 - 5:42pm

ANCHOR CHARTS

FRAME HEIGHT (IN)	FRAME WIDTH (IN)	TYPE A (CONCRETE) DESIGN PRESSURE = 90 PSF		TYPE B (METAL) DESIGN PRESSURE = 90 PSF		TYPE C (WOOD) DESIGN PRESSURE = 90 PSF	
		HEAD/SILL MAX ANCHOR SPACING (IN)	JAMBS MAX ANCHOR SPACING (IN)	HEAD/SILL MAX ANCHOR SPACING (IN)	JAMBS MAX ANCHOR SPACING (IN)	HEAD/SILL MAX ANCHOR SPACING (IN)	JAMBS MAX ANCHOR SPACING (IN)
84	24	14 O.C.	28 O.C.	16 O.C.	30 O.C.	12 O.C.	26 O.C.
	30	14 O.C.	23 O.C.	16 O.C.	25 O.C.	12 O.C.	21 O.C.
	36	12 O.C.	20 O.C.	13 O.C.	21 O.C.	10 O.C.	18 O.C.
	42	12 O.C.	18 O.C.	13 O.C.	19 O.C.	10 O.C.	16 O.C.
	48	12 O.C.	17 O.C.	13 O.C.	18 O.C.	10 O.C.	15 O.C.
	54	12 O.C.	16 O.C.	13 O.C.	17 O.C.	10 O.C.	14 O.C.
	60	12 O.C.	15 O.C.	13 O.C.	16 O.C.	10 O.C.	13 O.C.
	63	12 O.C.	15 O.C.	13 O.C.	15 O.C.	10 O.C.	13 O.C.
	66	12 O.C.	14 O.C.	13 O.C.	15 O.C.	10 O.C.	12 O.C.
90	24	14 O.C.	28 O.C.	16 O.C.	29 O.C.	12 O.C.	26 O.C.
	30	14 O.C.	23 O.C.	16 O.C.	24 O.C.	12 O.C.	21 O.C.
	36	12 O.C.	20 O.C.	13 O.C.	21 O.C.	10 O.C.	18 O.C.
	42	12 O.C.	18 O.C.	13 O.C.	19 O.C.	10 O.C.	16 O.C.
	48	12 O.C.	16 O.C.	13 O.C.	17 O.C.	10 O.C.	14 O.C.
	54	12 O.C.	15 O.C.	13 O.C.	16 O.C.	10 O.C.	13 O.C.
	60	12 O.C.	14 O.C.	13 O.C.	15 O.C.	10 O.C.	12 O.C.
	63	12 O.C.	14 O.C.	13 O.C.	15 O.C.	10 O.C.	12 O.C.
	66	12 O.C.	14 O.C.	13 O.C.	15 O.C.	10 O.C.	12 O.C.
96	24	14 O.C.	27 O.C.	16 O.C.	29 O.C.	12 O.C.	25 O.C.
	30	14 O.C.	23 O.C.	16 O.C.	24 O.C.	12 O.C.	21 O.C.
	36	12 O.C.	20 O.C.	13 O.C.	21 O.C.	10 O.C.	18 O.C.
	42	12 O.C.	18 O.C.	13 O.C.	19 O.C.	10 O.C.	16 O.C.
	48	12 O.C.	16 O.C.	13 O.C.	17 O.C.	10 O.C.	14 O.C.
	54	12 O.C.	15 O.C.	13 O.C.	16 O.C.	10 O.C.	13 O.C.
	60	12 O.C.	14 O.C.	13 O.C.	15 O.C.	10 O.C.	12 O.C.
	63	12 O.C.	14 O.C.	13 O.C.	14 O.C.	10 O.C.	12 O.C.
	66	12 O.C.	13 O.C.	13 O.C.	14 O.C.	10 O.C.	11 O.C.
78	12 O.C.	12 O.C.	13 O.C.	13 O.C.	10 O.C.	10 O.C.	

FRANK BENNARDO, P.E.
PE# 0046549 CA, 9885



04/19/2021

FL# 38535.1

ENGINEERING EXPRESS®
CORPORATE OFFICE:
160 SW 12th AVE, SUITE 106
DEERFIELD BEACH, FL 33442
(954) 354-0660 | (866) 396-9999
TEAM@ENGINEERINGEXPRESS.COM
ENGINEERINGEXPRESS.COM

GRAHAM ARCHITECTURAL PRODUCTS
1551 MT. ROSE AVENUE | YORK, PA 17403
PH: (717) 849-8100

SERIES GT6700 FIXED OVER AWNING
FLORIDA STATEWIDE APPROVAL
FLORIDA BUILDING CODE 7TH EDITION (2020)

REMARKS	DRWN	CHKD	DATE
FBC 2020 UPDATE	TAE	AJP	04/01/21
.	.	.	.
.	.	.	.
.	.	.	.

COPYRIGHT ENGINEERING EXPRESS®

21-38776

SCALE: NTS UNLESS NOTED

HEAD DETAILS

FRANK BENNARDO, P.E.
PE# 0046549 CA, 9885



04/19/2021

FL# 38535.1

ENGINEERING EXPRESS
CORPORATE OFFICE:
160 SW 12th AVE, SUITE 106
DEERFIELD BEACH, FL 33442
(954) 354-0660 | (866) 396-9999
TEAM@ENGINEERINGEXPRESS.COM
ENGINEERINGEXPRESS.COM

GRAHAM ARCHITECTURAL PRODUCTS
1551 MT. ROSE AVENUE | YORK, PA 17403
PH: (717) 849-8100
SERIES GT6700 FIXED OVER AWNING
FLORIDA STATEWIDE APPROVAL
FLORIDA BUILDING CODE 7TH EDITION (2020)

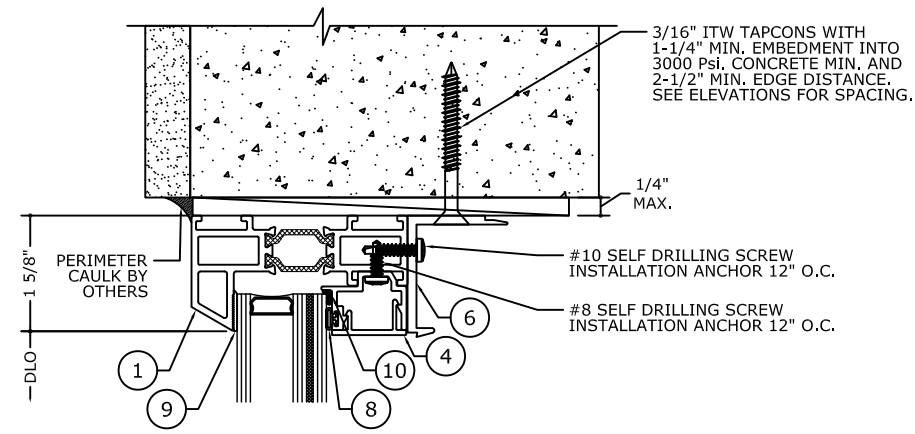
REMARKS	DRWN	CHKD	DATE
FBC 2020 UPDATE	TAE	AJP	04/01/21

COPYRIGHT ENGINEERING EXPRESS®

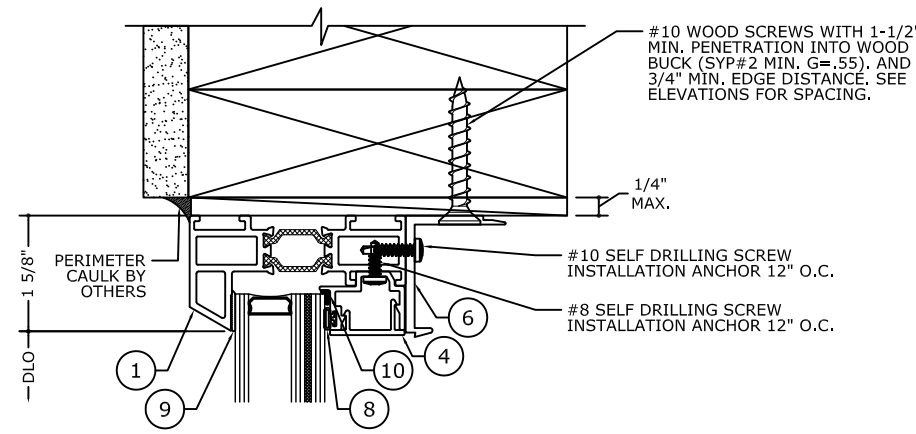
21-38776

SCALE: NTS UNLESS NOTED

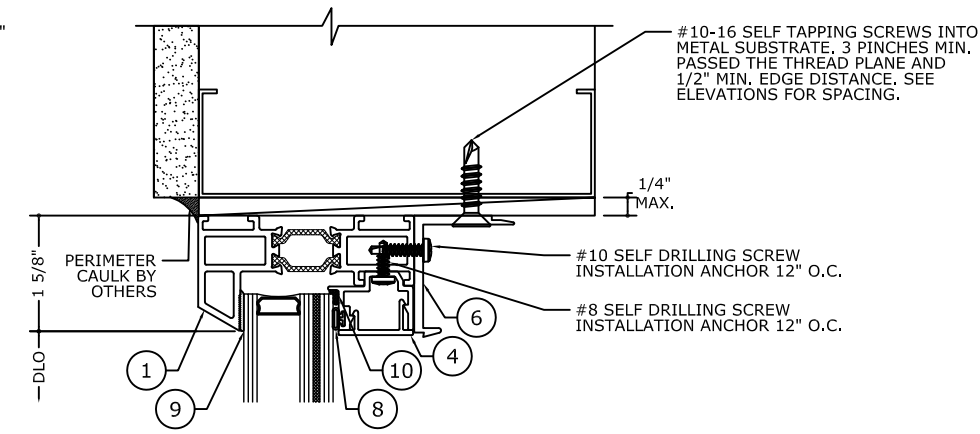
10 16



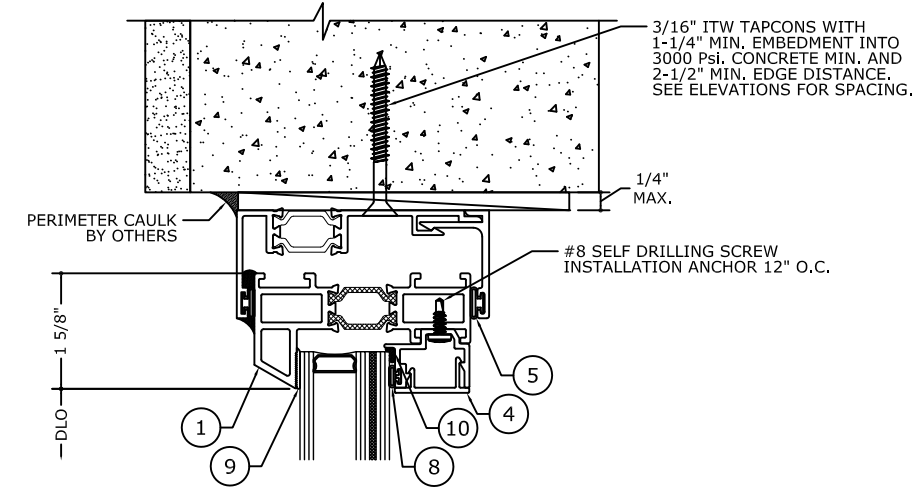
1 HEAD DETAIL
PRE-SET PANNING
SCREW APPLIED BEAD



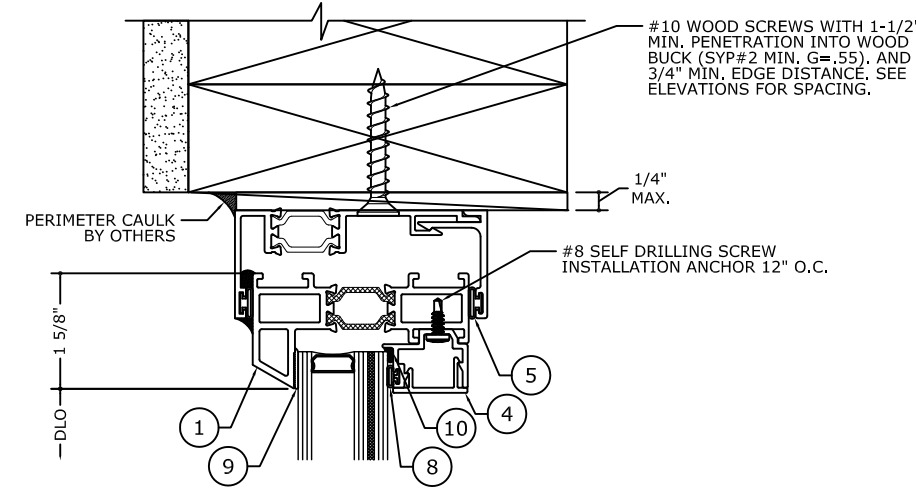
1.1 HEAD DETAIL
PRE-SET PANNING
SCREW APPLIED BEAD



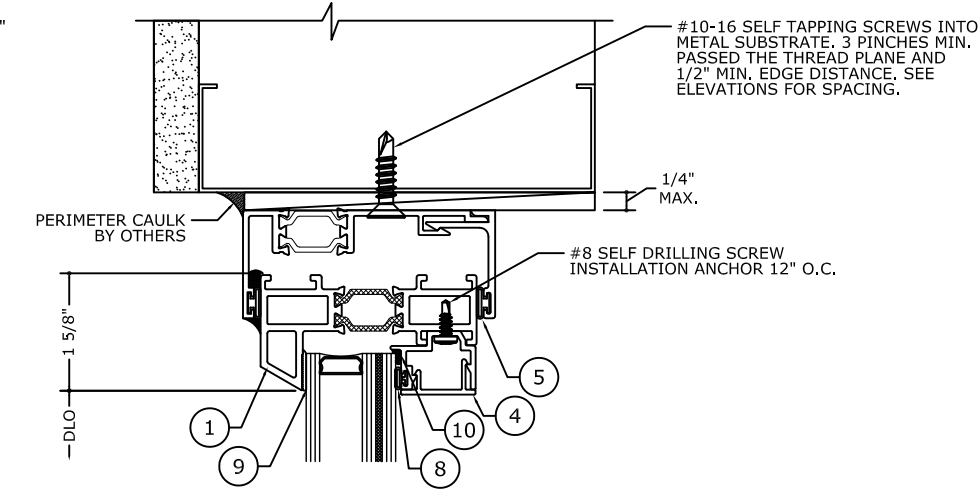
1.2 HEAD DETAIL
PRE-SET PANNING
SCREW APPLIED BEAD



1.3 HEAD DETAIL
RECEPTOR



1.4 HEAD DETAIL
RECEPTOR

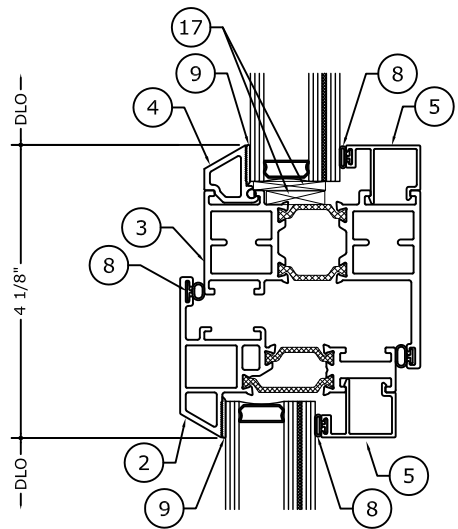


1.5 HEAD DETAIL
RECEPTOR

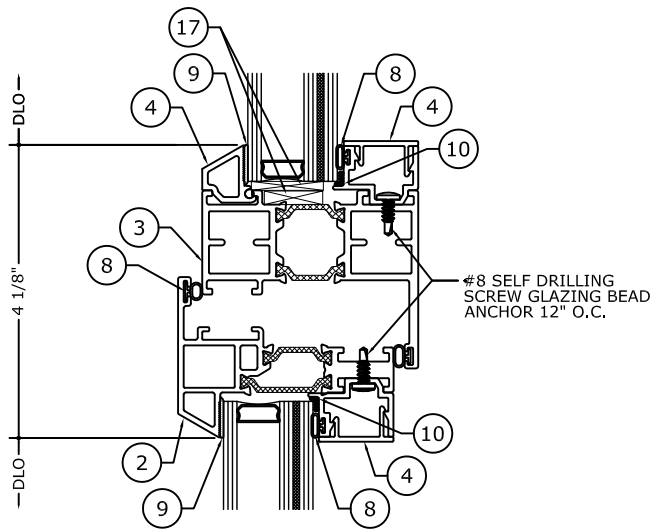
NOTE: REFER TO SYSTEM INSTALLATION MANUAL FOR FABRICATION AND ASSEMBLY INSTRUCTIONS.

C:\Users\joem\appdata\local\temp\AcPublish_7248\21-38776b GT6700 Fixed_Awning (2020 FSA).dwg joem 04/19/2021 - 5:42pm

HORIZONTAL DETAILS



2 INTERMEDIATE DETAIL



2.1 INTERMEDIATE DETAIL

NOTE: REFER TO SYSTEM INSTALLATION MANUAL FOR FABRICATION AND ASSEMBLY INSTRUCTIONS.

FRANK BENNARDO, P.E.
PE# 0046549 CA, 9885

04/19/2021

FL# 38535.1

ENGINEERING EXPRESS
CORPORATE OFFICE:
160 SW 12th AVE, SUITE 106
DEERFIELD BEACH, FL 33442
(954) 354-0660 | (866) 396-9999
TEAM@ENGINEERINGEXPRESS.COM
ENGINEERINGEXPRESS.COM

GRAHAM ARCHITECTURAL PRODUCTS
1551 MT. ROSE AVENUE | YORK, PA 17403
PH: (717) 849-8100

SERIES GT6700 FIXED OVER AWNING
FLORIDA STATEWIDE APPROVAL
FLORIDA BUILDING CODE 7TH EDITION (2020)

REMARKS	DRWN	CHKD	DATE
FBC 2020 UPDATE	TAE	AJP	04/01/21

COPYRIGHT ENGINEERING EXPRESS®

21-38776

SCALE: NTS UNLESS NOTED

SILL DETAILS

FRANK BENNARDO, P.E.
PE# 0046549 CA, 9885



04/19/2021

FL# 38535.1

ENGINEERING EXPRESS
CORPORATE OFFICE:
160 SW 12th AVE, SUITE 106
DEERFIELD BEACH, FL 33442
(954) 354-0660 | (866) 396-9999
TEAM@ENGINEERINGEXPRESS.COM
ENGINEERINGEXPRESS.COM

GRAHAM ARCHITECTURAL PRODUCTS
1551 MT. ROSE AVENUE | YORK, PA 17403
PH: (717) 849-8100
SERIES GT6700 FIXED OVER AWNING
FLORIDA STATEWIDE APPROVAL
FLORIDA BUILDING CODE 7TH EDITION (2020)

REMARKS	DRWN	CHKD	DATE
FBC 2020 UPDATE	TAE	AJP	04/01/21

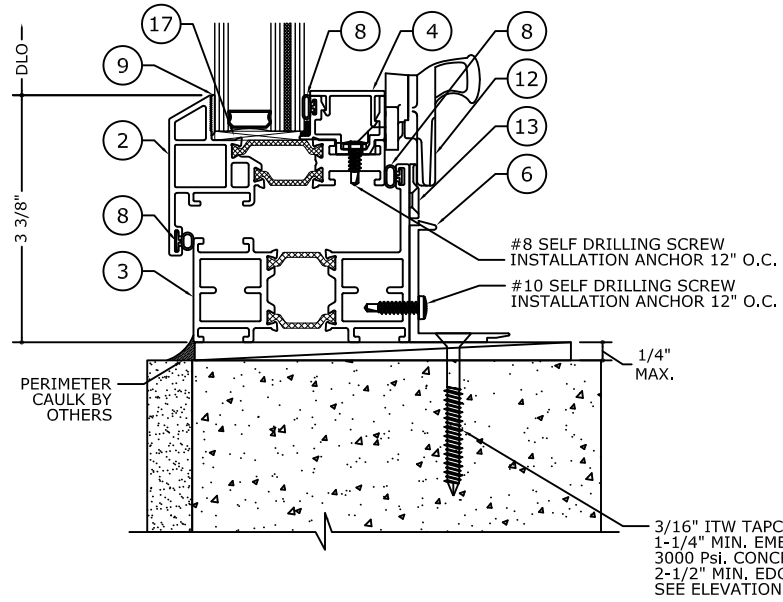
COPYRIGHT ENGINEERING EXPRESS®

21-38776

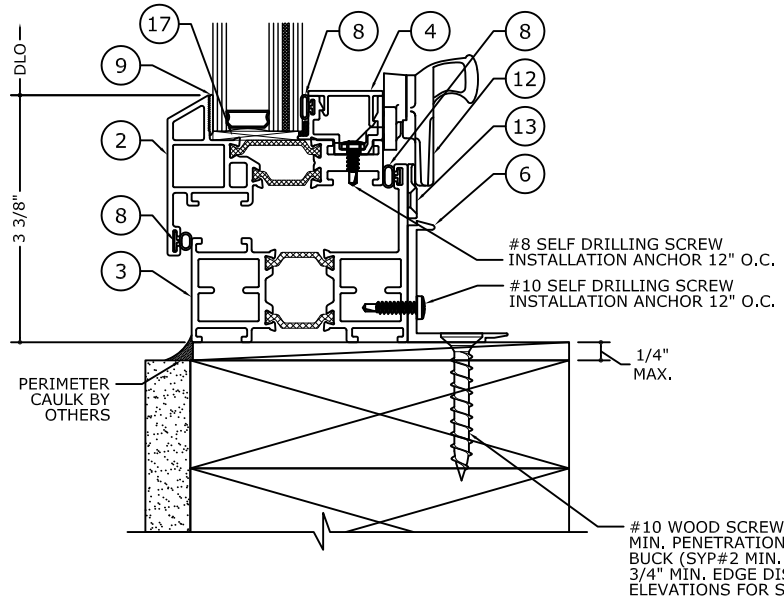
SCALE: NTS UNLESS NOTED

16

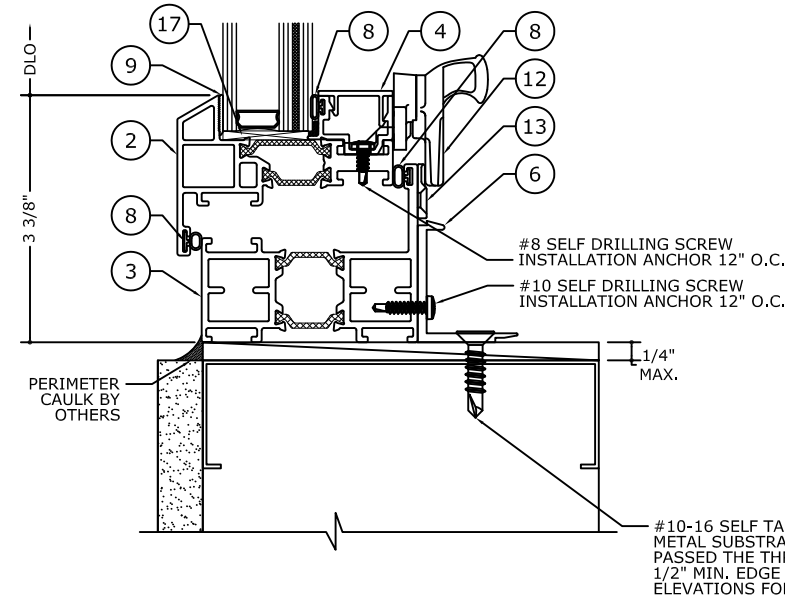
12



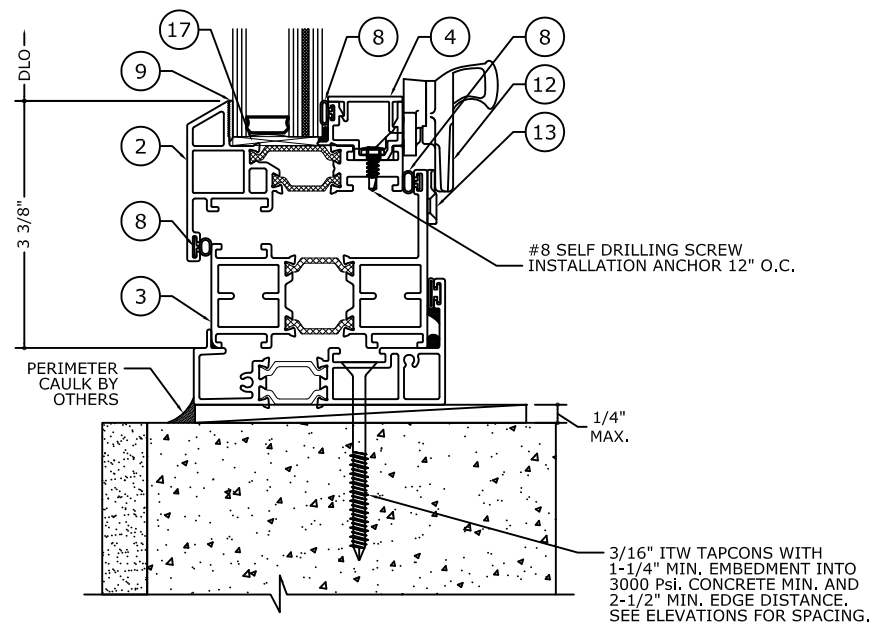
2 SILL DETAIL
PRE-SET PANNING
SCREW APPLIED BEAD



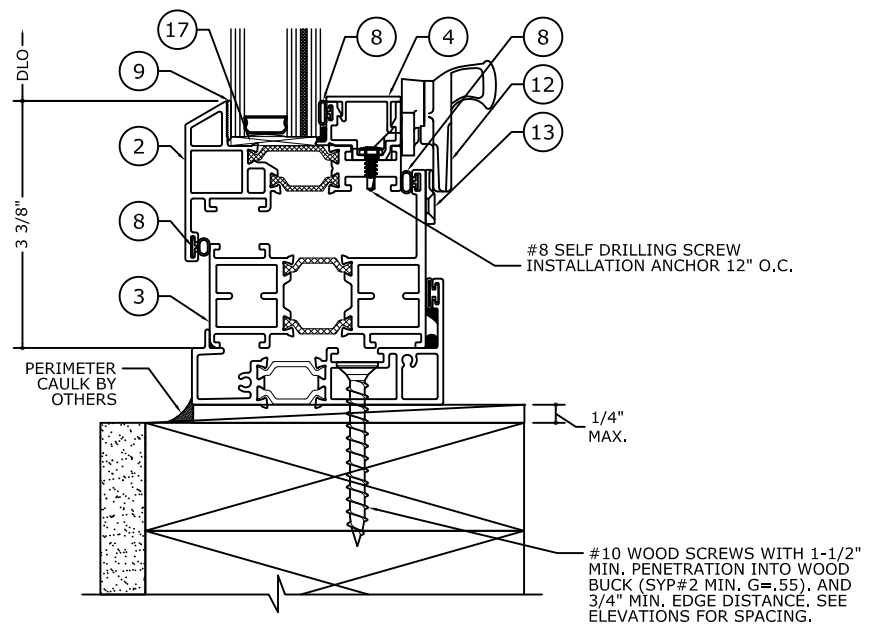
2.1 SILL DETAIL
PRE-SET PANNING
SCREW APPLIED BEAD



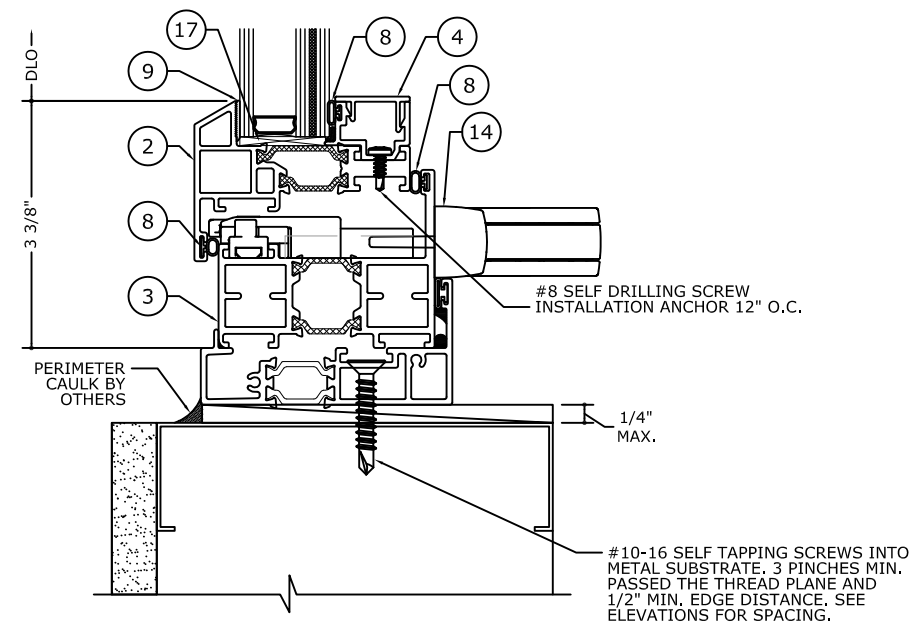
2.2 SILL DETAIL
PRE-SET PANNING
SCREW APPLIED BEAD



2.3 SILL DETAIL
RECEPTOR



2.4 SILL DETAIL
RECEPTOR



2.5 SILL DETAIL
RECEPTOR

NOTE: REFER TO SYSTEM INSTALLATION MANUAL FOR FABRICATION AND ASSEMBLY INSTRUCTIONS.

C:\Users\joeml\appdata\local\temp\AcPublish_724821-38776b GT6700 Fixed_Awning (2020 FSA).dwg joem 04/19/2021 - 5:43pm

VERTICAL JAMB DETAILS

FRANK BENNARDO, P.E.
PE# 0046549 CA, 9885

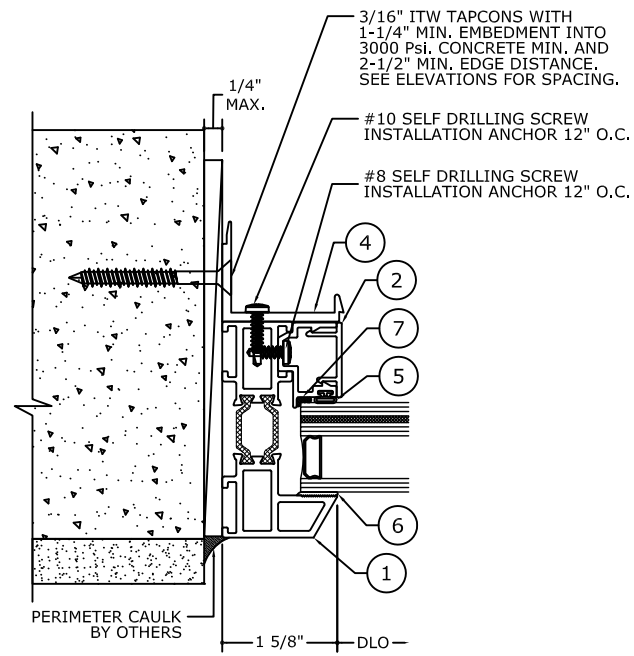


04/19/2021

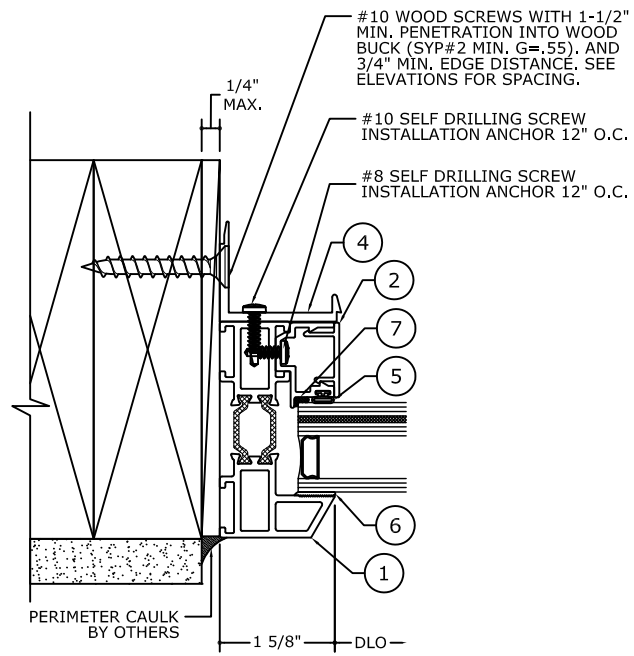
FL# 38535.1

ENGINEERING EXPRESS
CORPORATE OFFICE:
160 SW 12th AVE, SUITE 106
DEERFIELD BEACH, FL 33442
(954) 354-0660 | (866) 396-9999
TEAM@ENGINEERINGEXPRESS.COM
ENGINEERINGEXPRESS.COM

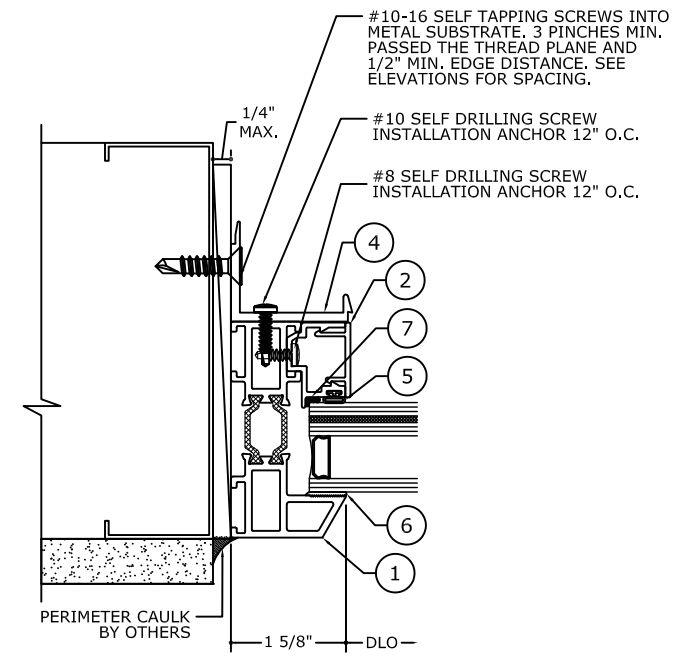
GRAHAM ARCHITECTURAL PRODUCTS
1551 MT. ROSE AVENUE | YORK, PA 17403
PH: (717) 849-8100
SERIES GT6700 FIXED OVER AWNING
FLORIDA STATEWIDE APPROVAL
FLORIDA BUILDING CODE 7TH EDITION (2020)



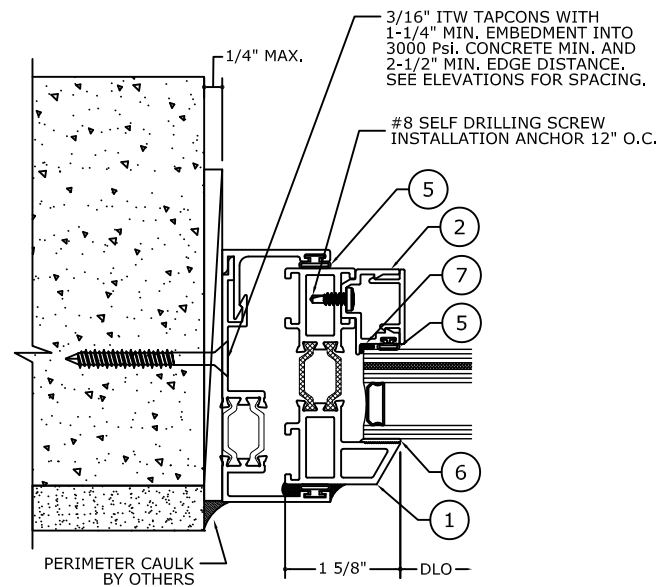
4 JAMB DETAIL
PRE-SET PANNING
SCREW APPLIED BEAD



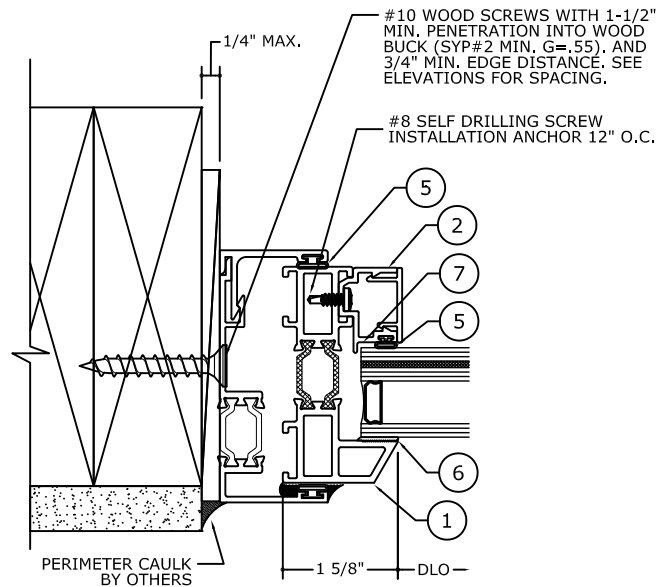
4.1 JAMB DETAIL
PRE-SET PANNING
SCREW APPLIED BEAD



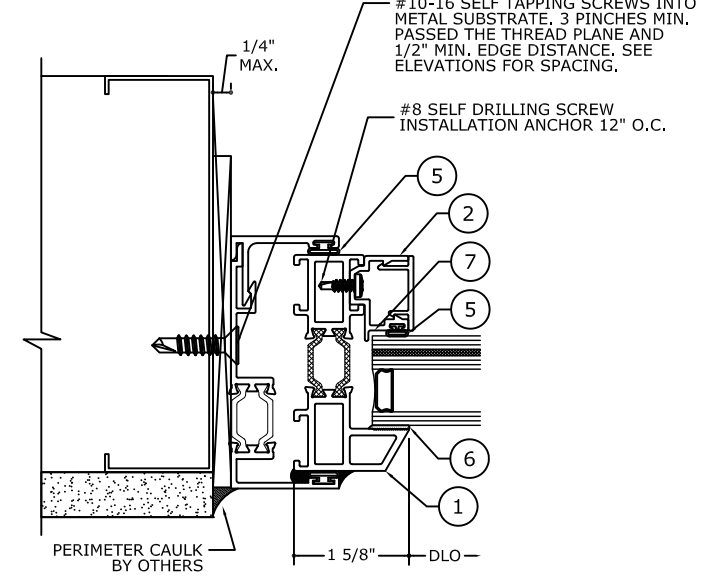
4.2 JAMB DETAIL
PRE-SET PANNING
SCREW APPLIED BEAD



4.3 JAMB DETAIL
RECEPTOR



4.4 JAMB DETAIL
RECEPTOR



4.5 JAMB DETAIL
RECEPTOR

NOTE: REFER TO SYSTEM INSTALLATION MANUAL FOR FABRICATION AND ASSEMBLY INSTRUCTIONS.

REMARKS	DRWN	CHKD	DATE
FBC 2020 UPDATE	TAE	AJP	04/01/21

COPYRIGHT ENGINEERING EXPRESS®

21-38776

SCALE: NTS UNLESS NOTED

C:\Users\joem\appdata\local\temp\AcPublish_7248\21-38776b GT6700 Fixed_Awning (2020 FSA).dwg joem 04/19/2021 - 5:43pm

VERTICAL JAMB DETAILS

FRANK BENNARDO, P.E.
PE# 0046549 CA, 9885



04/19/2021

FL# 38535.1

ENGINEERING EXPRESS
CORPORATE OFFICE:
160 SW 12th AVE, SUITE 106
DEERFIELD BEACH, FL 33442
(954) 354-0660 | (866) 396-9999
TEAM@ENGINEERINGEXPRESS.COM
ENGINEERINGEXPRESS.COM

GRAHAM ARCHITECTURAL PRODUCTS
1551 MT. ROSE AVENUE | YORK, PA 17403
PH: (717) 849-8100
SERIES GT6700 FIXED OVER AWNING
FLORIDA STATEWIDE APPROVAL
FLORIDA BUILDING CODE 7TH EDITION (2020)

REMARKS	DRWN	CHKD	DATE
FBC 2020 UPDATE	TAE	AJP	04/01/21

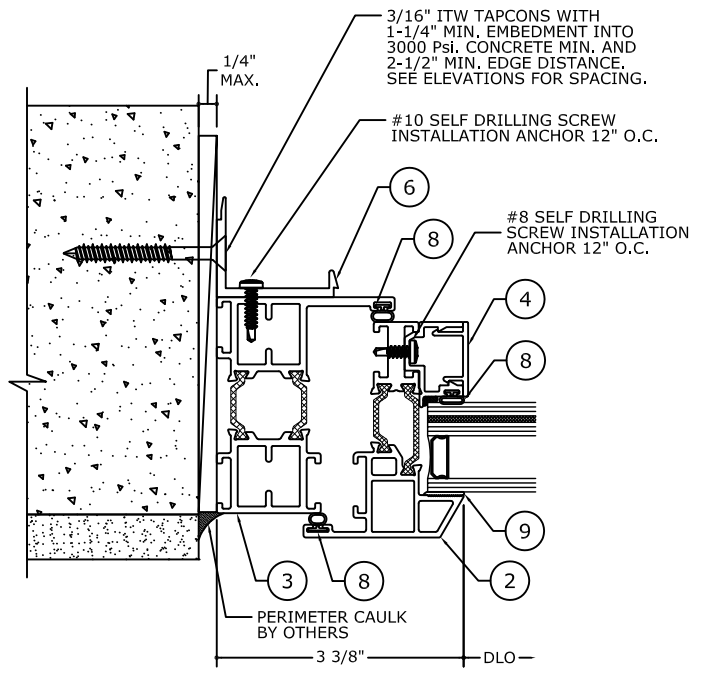
COPYRIGHT ENGINEERING EXPRESS®

21-38776

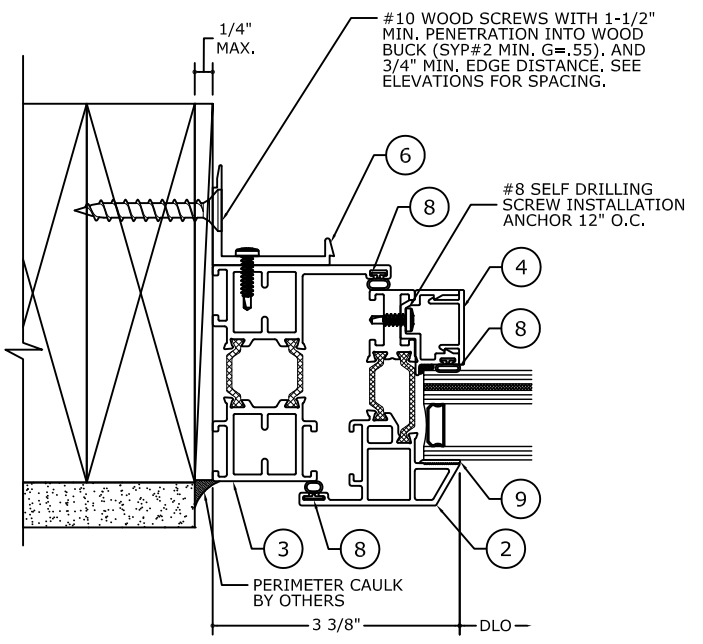
SCALE: NTS UNLESS NOTED

16

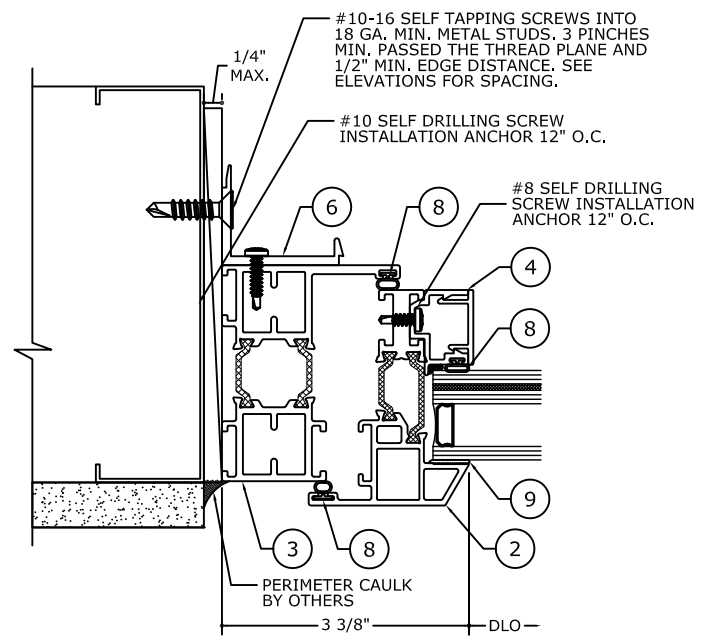
14



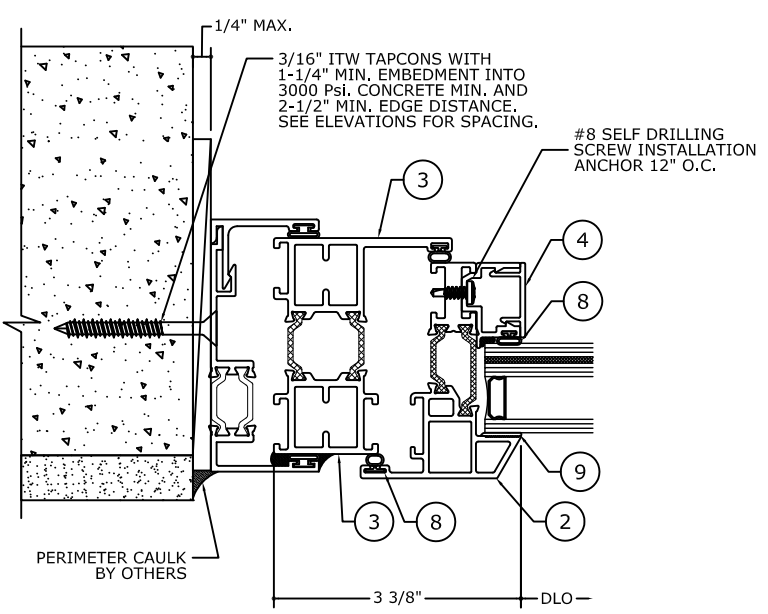
5 JAMB DETAIL
PRE-SET PANNING
SCREW APPLIED BEAD



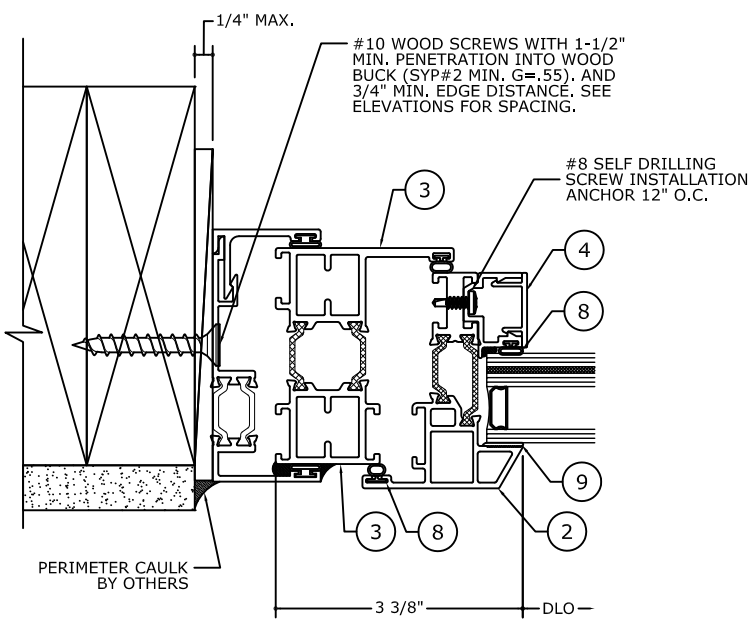
5.1 JAMB DETAIL
PRE-SET PANNING
SCREW APPLIED BEAD



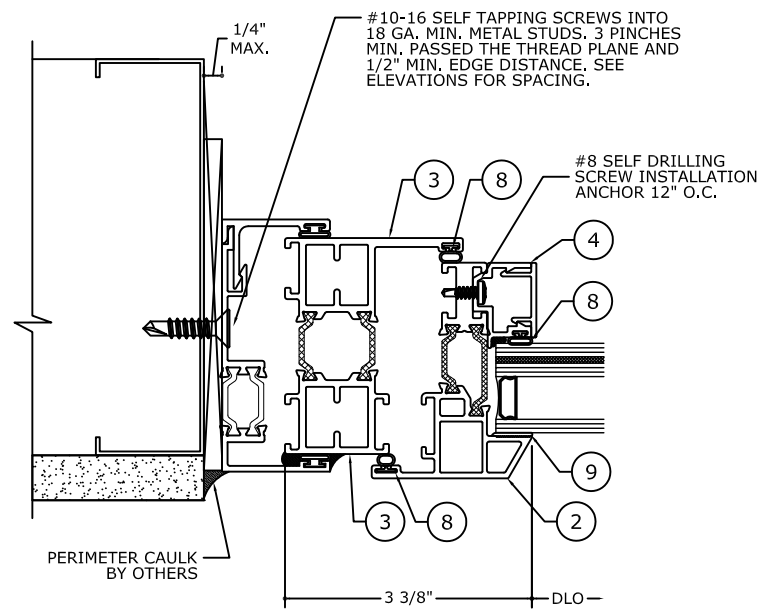
5.2 JAMB DETAIL
PRE-SET PANNING
SCREW APPLIED BEAD



5.3 JAMB DETAIL
RECEPTOR



5.4 JAMB DETAIL
RECEPTOR

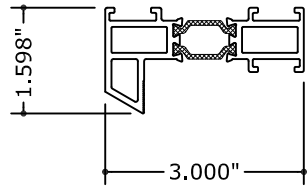


5.5 JAMB DETAIL
RECEPTOR

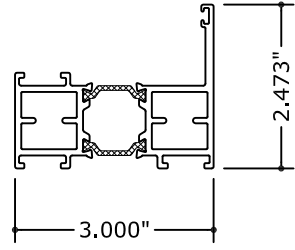
NOTE: REFER TO SYSTEM INSTALLATION MANUAL FOR FABRICATION AND ASSEMBLY INSTRUCTIONS.

C:\Users\joem\appdata\local\temp\AcPublish_7248\21-38776b GT6700 Fixed_Awning (2020 FSA).dwg joem 04/19/2021 - 5:43pm

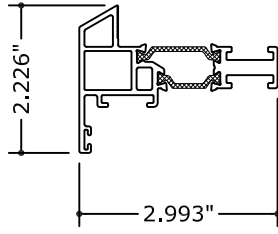
SYSTEM COMPONENTS



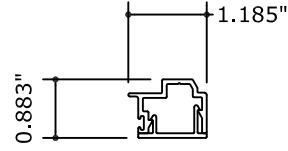
① FIXED FRAME
6063-T5



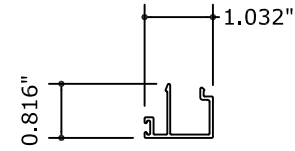
② OPERABLE FRAME
6063-T5



③ VENT RAIL
6063-T5



④ GLAZING BEAD SCREW APPLIED
6063-T5



⑤ GLAZING BEAD
6063-T5

FRANK BENNARDO, P.E.
PE# 0046549 CA, 9885



04/19/2021

FL# 38535.1



CORPORATE OFFICE:
160 SW 12th AVE, SUITE 106
DEERFIELD BEACH, FL 33442
(954) 354-0660 | (866) 396-9999
TEAM@ENGINEERINGEXPRESS.COM
ENGINEERINGEXPRESS.COM

GRAHAM ARCHITECTURAL PRODUCTS
1551 MT. ROSE AVENUE | YORK, PA 17403
PH: (717) 849-8100

SERIES GT6700 FIXED OVER AWNING
FLORIDA STATEWIDE APPROVAL
FLORIDA BUILDING CODE 7TH EDITION (2020)

REMARKS	DRWN	CHKD	DATE
FBC 2020 UPDATE	TAE	AJP	04/01/21
	-	-	-
	-	-	-
	-	-	-

COPYRIGHT ENGINEERING EXPRESS®

21-38776

SCALE: NTS UNLESS NOTED

BILL OF MATERIALS

ITEM NO.	DESCRIPTION	MATERIAL	MANUFACTURER
1	FIXED - FRAME	ALUM. 6063-T5	
2	VENT - RAIL	ALUM. 6063-T5	
3	OPERABLE - FRAME	ALUM. 6063-T5	
4	GLAZING BEAD SCERW APPLIED	ALUM. 6063-T6	
5	GLAZING BEAD	ALUM. 6063-T6	
6	ALUMINUM CLIP 1/8"	ALUM. 6063-T6	
7	FIXED FRAME ADAPTOR	ALUM. 6063-T6	
8	BULB GASKET	5/16 TPE BULB	ULTRAFAB
9	GLAZING COMPOUND	SILICONE	DOWSIL 2400
10	GLAZING COMPOUND	SILICONE	DOWSIL 995
11	3 PIECE MULLION	ALUM. 6063-T5	
12	MULLION - PRESSURE PLATE	ALUM. 6063-T6	
13	CAM LOCK HANDLE	WHITE BRONZE	BRONZE CRAFT
14	CAM LOCK STRIKE	WHITE BRONZE	BRONZE CRAFT
15	SL OPERATOR HANDLE	ZAMAK	SAVIO
16	SL OPERATOR GEARBOX	STAINLESS	SAVIO
17	GLAZING BLOCK	-	-

FRANK BENNARDO, P.E.
PE# 0046549 CA, 9885



04/19/2021

FL# 38535.1

ENGINEERING EXPRESS®
CORPORATE OFFICE:
160 SW 12th AVE, SUITE 106
DEERFIELD BEACH, FL 33442
(954) 354-0660 | (866) 396-9999
TEAM@ENGINEERINGEXPRESS.COM
ENGINEERINGEXPRESS.COM

GRAHAM ARCHITECTURAL PRODUCTS
1551 MT. ROSE AVENUE | YORK, PA 17403
PH: (717) 849-8100

SERIES GT6700 FIXED OVER AWNING
FLORIDA STATEWIDE APPROVAL
FLORIDA BUILDING CODE 7TH EDITION (2020)

REMARKS	DRWN	CHKD	DATE
FBC 2020 UPDATE	TAE	AJP	04/01/21

COPYRIGHT ENGINEERING EXPRESS®

21-38776

SCALE: NTS UNLESS NOTED

16